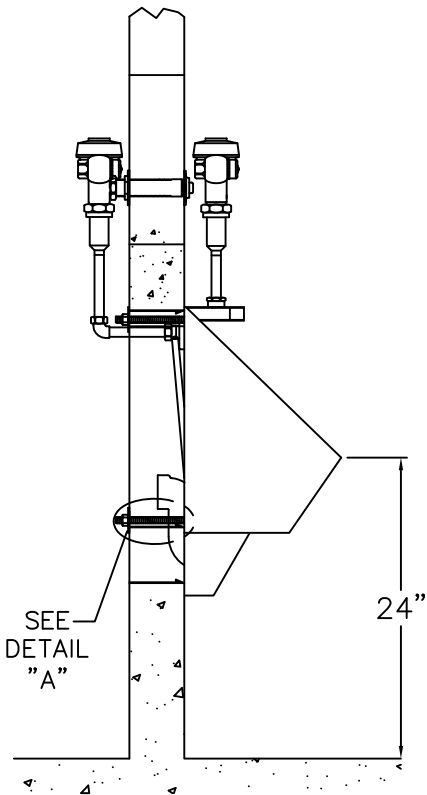
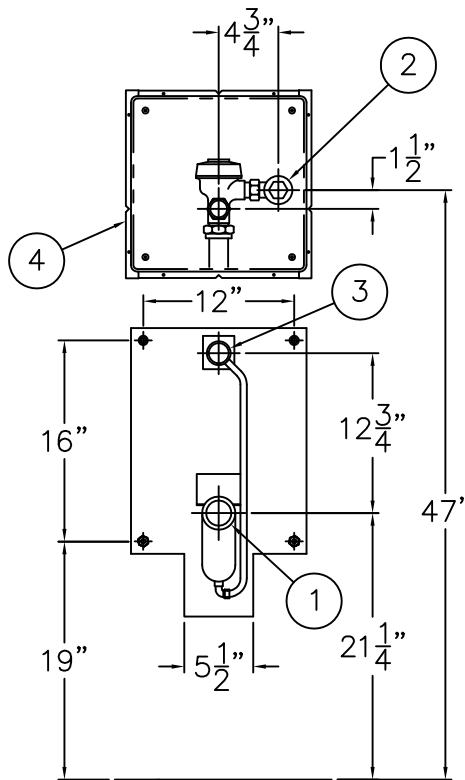


**DETAIL 'A'**

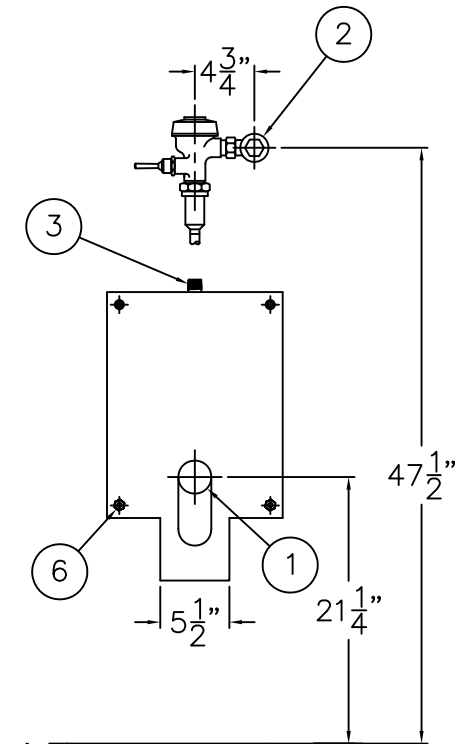
<b>REFERENCE DRAWING</b>	
FLUSH VALVE ACCESS PANEL MODEL NO. 2898	9908-399-001
WALL SLEEVE -W	9925-240-001
WALL SLEEVE -T	9925-241-001



**SIDE VIEW**



**REAR VIEW  
-W WALL SUPPLY UNIT**



**ROUGH-IN REAR VIEW OF  
-T TOP SUPPLY UNIT**

**INSTALLATION INSTRUCTIONS:**

A- ROUGH-IN FOR THE FOLLOWING:

- 2" NPTI WASTE OUTLET (1).
- FLUSH VALVE INLET 3/4" IPS (2).
- FIXTURE FLUSHING INLET 3/4" NPTE (3).

B- FOR DURA-WARE FLUSH VALVE ACCESS PANELS (4), FOR CONCEALED FLUSH VALVE INSTALLATION REFER TO DRAWING #9908-399-001.

C- FASTEN 1/2"-13 UNC ALL-THREAD STUDS (5) PROVIDED, TO FIXTURE MOUNTING POINTS (6) AND SLIDE STUDS (5) THRU WALL OPENINGS.  
NOTE: STUDS MUST HAVE A 1/2" ENGAGEMENT MIN.

D- FROM CHASE SIDE SECURE FIXTURE USING WASHERS (7) & NUTS (8) PROVIDED.

E- MAKE UP URINAL WASTE CONNECTION (1).

F- CONNECT FLUSH VALVE PER MANUFACTURER'S RECOMMENDATIONS.



ACORN ENGINEERING COMPANY  
P.O. BOX 3527 Industry, CA 91744  
15125 Proctor Ave Industry, CA 91746  
(626) 336-4561 FAX (626) 961-2200

TITLE

**REAR MOUNT - BLOWOUT URINAL CAT. #1700**

MANUFACTURE DATE

**FEBRUARY 1975  
TO PRESENT**

DATE ISSUED

**10/04/99**

DATE REVISED

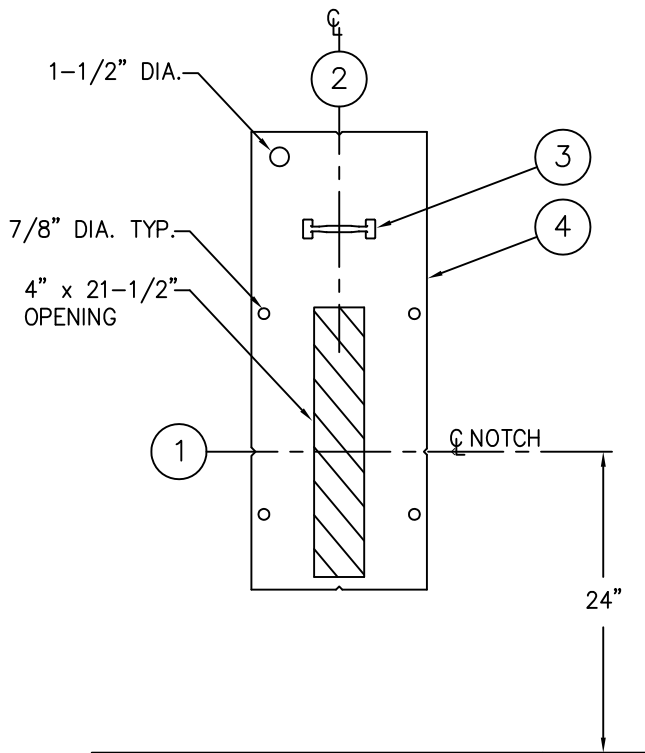
**06/17/16 D**

DRAWING NUMBER

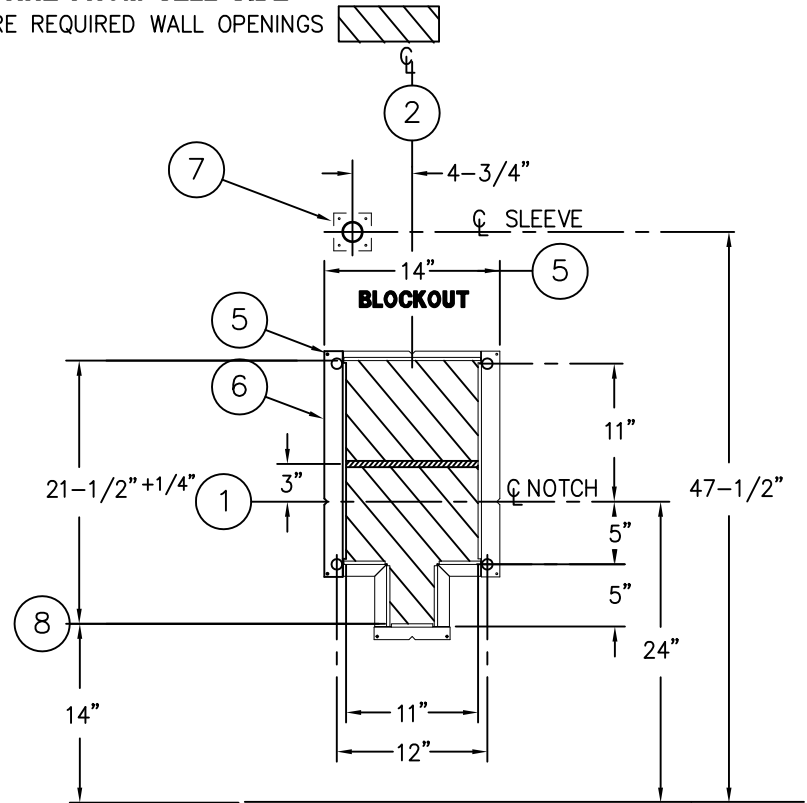
**9925-071-001**



**BOTH VIEWS ARE FROM CELL SIDE**  
 SHADED AREAS ARE REQUIRED WALL OPENINGS



**METAL TEMPLATE (-MT)**



**WALL SLEEVE (-SW)**

**NOTE:**

ON POURED WALL CONSTRUCTION, THE PUSHBUTTON SLEEVE, ITEM ⑦ IS CAPPED. THIS CAP MUST BE REMOVED FROM THE CHASE SIDE OF THE WALL, BEFORE INSTALING F.V. PUSHBUTTON

**INSTALLATION INSTRUCTIONS**

**METAL TEMPLATES (-MT)**

TEMPLATES ARE USED TO LAYOUT REQUIRED WALL OPENINGS FOR SUBSEQUENT FLAME CUTTING OR CORE DRILLING.

- A- STRIKE A HORIZONTAL CHALKLINE ① ON THE WALL 24" ABOVE FINISHED FLOOR. THIS WILL LOCATE CENTERLINE FOR HORIZONTAL NOTCHES ON TEMPLATE.
- B- STRIKE A VERTICAL CHALKLINE ② ON THE WALL TO INDICATE CENTERLINE OF FIXTURE. THIS WILL LOCATE FOR VERTICAL NOTCHES ON TEMPLATE.
- C- USING HANDLE ③ ON TEMPLATE ④, PLACE TEMPLATE AGAINST THE WALL, LOCATING NOTCHES AT CHALKLINES. MARK FOR WALL OPENINGS.

**WALL SLEEVES (-SW)**

SLEEVES ARE INSTALLED IN FORMS (USING NAIL HOLES ⑤ PROVIDED) OR GROUTED INTO BLOCK WALLS, BECOMING A PERMANENT PART OF THE WALL.

**NOTE:** FOR POURED WALL CONSTRUCTION, TEMPORARY BRACING SHOULD BE INSTALLED WITHIN SLEEVE OPENING TO PREVENT DEFORMATION TO SLEEVE WHICH MAY OCCUR DURING POUR. DO NOT POUR CONCRETE DIRECTLY ON TOP OF WALL SLEEVE.

- A- INSTALL SLEEVE WITH FLANGE ⑥ ON CHASE SIDE OF WALL.
- B- TOP AND BOTTOM NOTCHES TO BE LOCATED AT VERTICAL CENTERLINE ② OF SLEEVE.
- C- SIDE NOTCHES ① TO BE LOCATED AT 24" ABOVE THE FINISHED CELL SIDE FLOOR (INTEGRAL TOILET SEAT HEIGHT).
- D- SEPARATE SLEEVE ⑦ FOR FLUSH VALVE PUSHBUTTON; LOCATED 47-1/2" ABOVE FINISHED CELL SIDE FLOOR.
- E- WHEN SLEEVES ARE NOT AVAILABLE USE BLOCKOUT DIMENSIONS SHOWN ⑧.

ACORN ENGINEERING COMPANY  
 P.O. BOX 3527 Industry, CA 91744  
 15125 Proctor Ave Industry, CA 91746  
 (626) 336-4561 FAX (626) 961-2200

**TITLE SLEEVES AND TEMPLATES (CAT. #1700-T & 1702-T)**

MANUFACTURE DATE

**FEB 1975  
 TO PRESENT**

DATE ISSUED

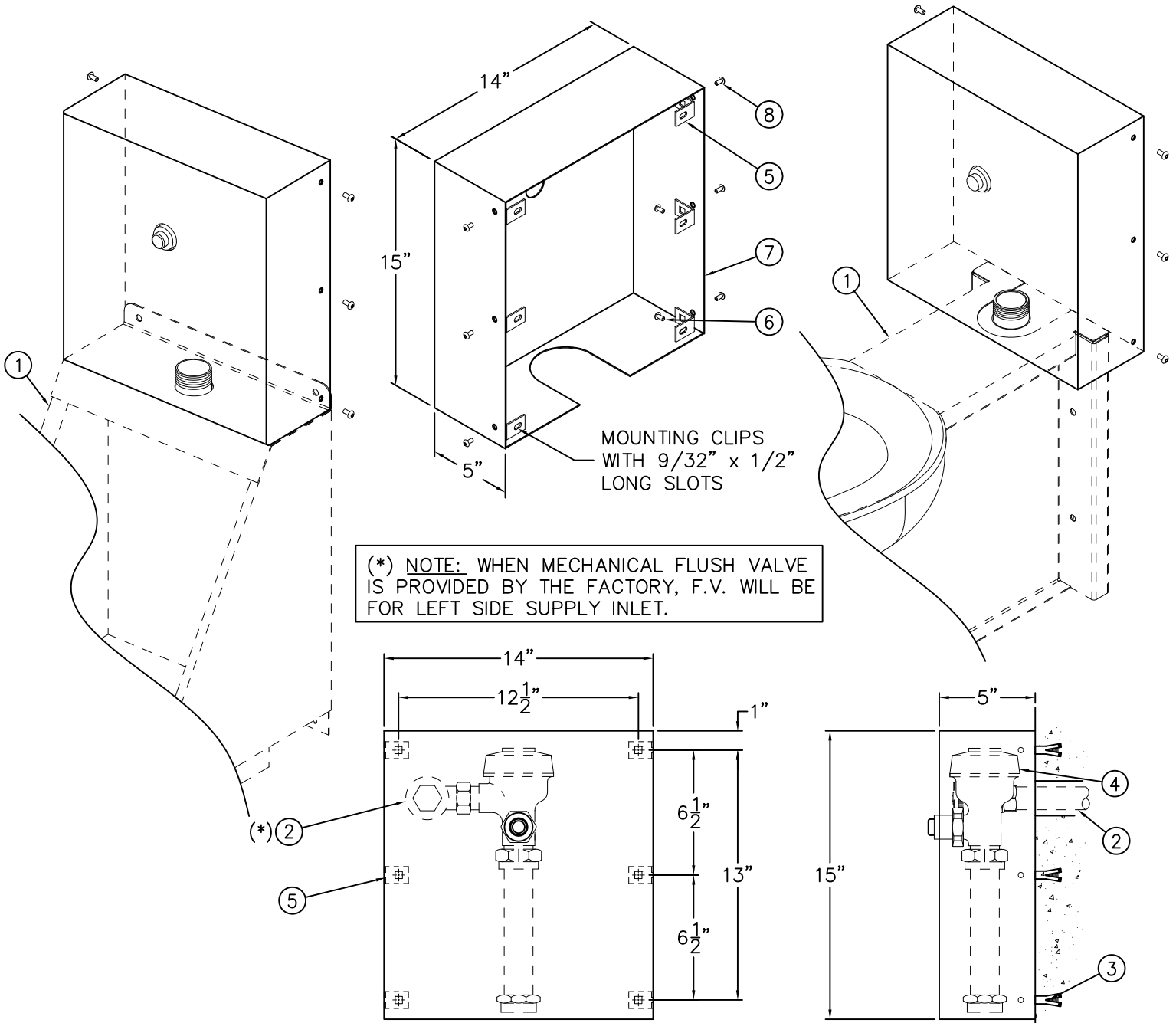
**3-1-90**

DATE REVISED

**08/30/00**

DRAWING NUMBER

**9925-241-001**



(\* NOTE: WHEN MECHANICAL FLUSH VALVE IS PROVIDED BY THE FACTORY, F.V. WILL BE FOR LEFT SIDE SUPPLY INLET.

**INSTALLATION INSTRUCTIONS:**

- A- MOUNT FIXTURE ① TO WALL.
- B- ROUGH-IN FOR FLUSH VALVE SUPPLY ② REFER TO FIXTURE INSTALLATION INSTRUCTIONS.
- C- LOCATE AND INSTALL WALL ANCHORS (BY OTHERS) ③.
- D- INSTALL FLUSH VALVE ④ TO FIXTURE ①.
- E- ATTACH MOUNTING CLIPS ⑤ TO WALL USING MOUNTING SCREWS ⑥ (BY OTHERS).
- F- ATTACH FLUSH VALVE COVER ⑦ TO MOUNTING CLIPS ⑤ USING #10-32 SCREWS ⑧ PROVIDED.

**Front View of -FVC**

**Side View of -FVC**

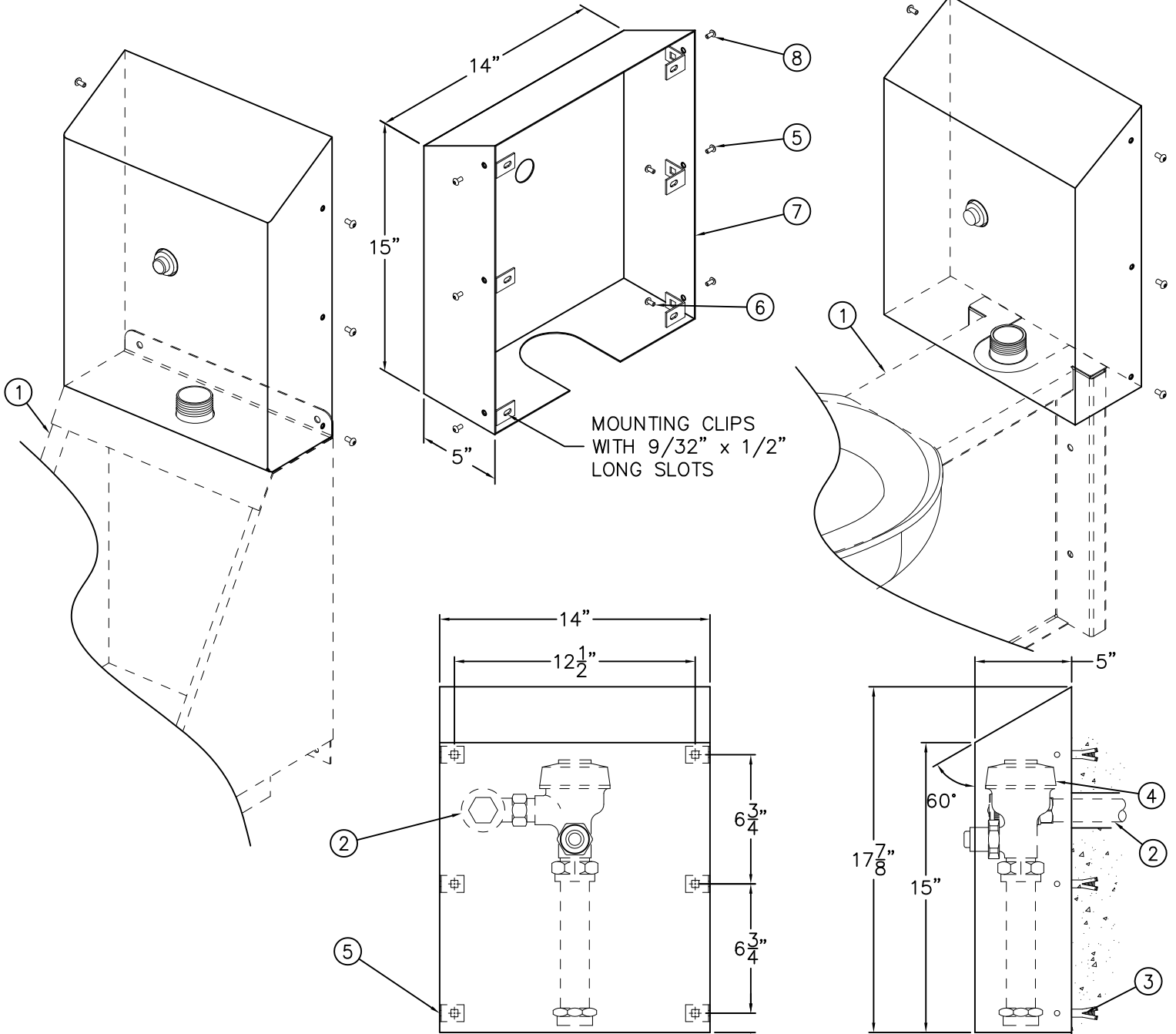
Reference Drawings	
Security Screws	9951-005-001
Tinnerman Nuts	9951-007-001

**NOTE: FIXTURES SHOWN FOR REFERENCE ONLY.**



ACORN ENGINEERING COMPANY  
 P.O. BOX 3527 Industry, CA 91744  
 15125 Proctor Ave Industry, CA 91746  
 (626) 336-4561 FAX (626) 961-2200

TITLE <b>-FVC FLUSH VALVE COVER #2802</b>		
MANUFACTURE DATE <b>FEBRUARY 1975 TO PRESENT</b>	DATE ISSUED <b>04/17/98</b>	DRAWING NUMBER <b>9908-395-001</b>
	DATE REVISED <b>12/21/16 D</b>	



**INSTALLATION INSTRUCTIONS:**

- A- MOUNT FIXTURE ① TO WALL.
- B- ROUGH-IN FOR FLUSH VALVE SUPPLY ② REFER TO FIXTURE INSTALLATION INSTRUCTIONS.
- C- LOCATE AND INSTALL WALL ANCHORS (BY OTHERS) ③.
- D- INSTALL FLUSH VALVE ④ TO FIXTURE ①.
- E- ATTACH MOUNTING CLIPS ⑤ TO WALL USING MOUNTING SCREWS ⑥ (BY OTHERS).
- F- ATTACH FLUSH VALVE COVER ⑦ TO MOUNTING CLIPS ⑤ USING #10-32 SCREWS ⑧ PROVIDED.

**Front View of -FVC-SLPT**

**Side View of -FVC-SLPT**

Reference Drawings	
Security Screws	9951-005-001
Tinnerman Nuts	9951-007-001

NOTE: FIXTURES SHOWN FOR REFERENCE ONLY.

<p>ACORN ENGINEERING COMPANY P.O. BOX 3527 Industry, CA 91744 15125 Proctor Ave Industry, CA 91746 (626) 336-4561 FAX (626) 961-2200</p>	<p>TITLE <b>-FVC-SLPT FLUSH VALVE COVER WITH SLOPING TOP #2802</b></p>		
	<p>MANUFACTURE DATE</p> <p><b>FEBRUARY 1975</b></p> <p><b>TO PRESENT</b></p>	<p>DATE ISSUED</p> <p><b>03/07/11</b></p>	<p>DRAWING NUMBER</p> <p><b>9908-397-001</b></p>
		<p>DATE REVISED</p> <p><b>04/15/13 E</b></p>	