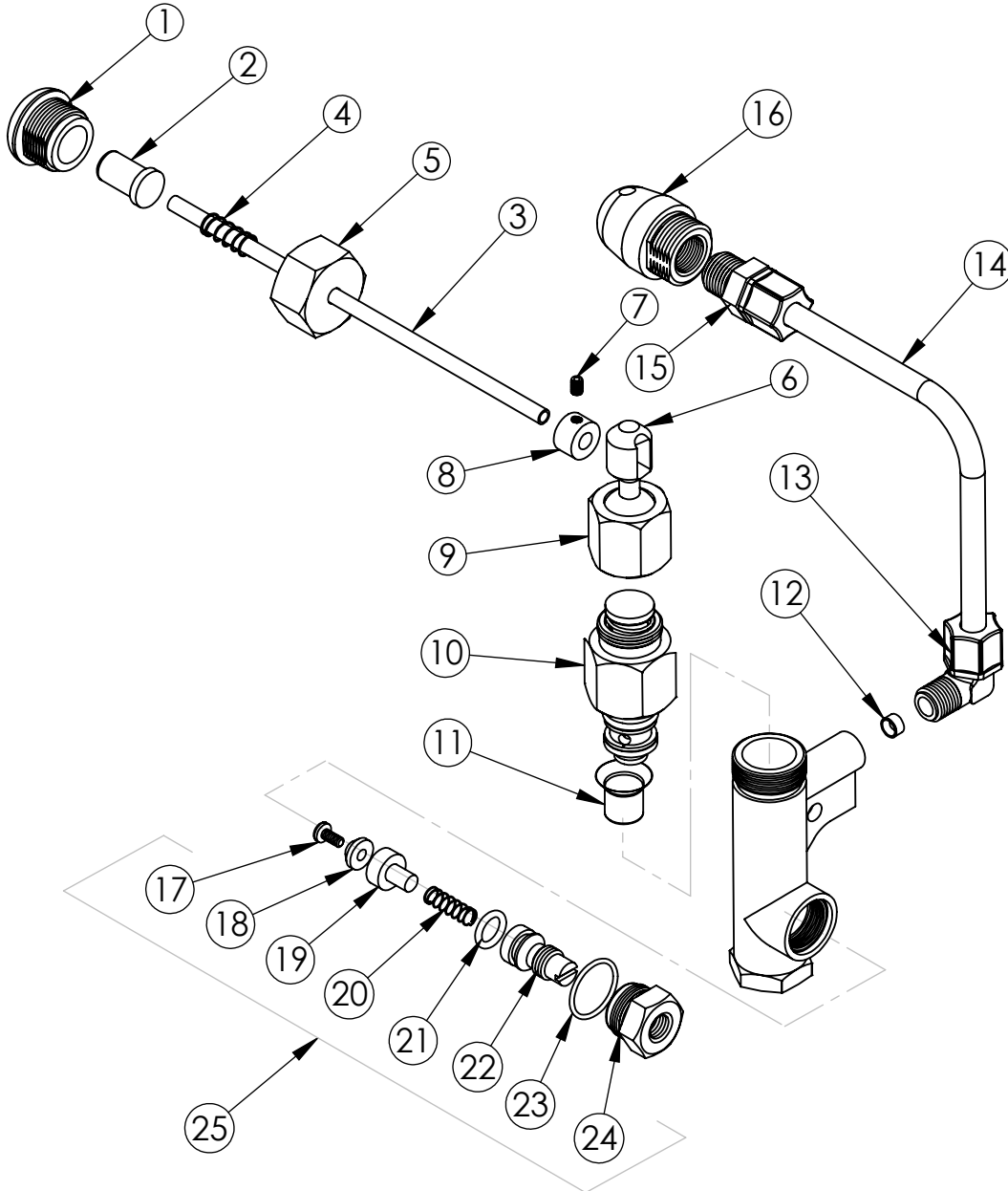


AFTER MARCH 2000

SPECIFY WALL THICKNESS
FOR PUSHROD LENGTH _____



ITEM #	PART #	DESCRIPTION	QTY.
1	380145	PUSHBUTTON SLEEVE	1
2	600060	PUSHBUTTON	1
3	115104	PUSHROD (LENGTH=WALL + 6")	1
4	600075	SPRING FOR PUSHROD	1
5	600055	PUSHBUTTON NUT	1
6	380118	TOGGLE LEVER, BRASS	1
7	600096	SCREW, SOCKET SCREW, S/S, #10-32 X 1/4"	1
8	600095	COLLAR 1/4" BRASS SHAFT	1
9	600005	TOGGLE NUT	1
10	600276	CARTRIDGE SELF-CLOSING	1
11	600181	INSERT, STRAINER, T304 S/S (80-MESH)	1
12	380138	FLOW REGULATOR, 0.5 GPM, RED (MR03)	1
13	320579	ELBOW 3/8" TUBE x 1/4" MPT	1
14	970018	TUBING 3/8 OD X 1/4 ID NATURAL	1
15	320566	3/8" x 3/8" MPT CONNECTOR	1
16	380045	(BP) FILLER/BUBBLER	1
17	540001	SCREW #8-32 x 3/8" PANHEAD SLOTTED	1
18	600176	FAUCET WASHER (NSF)	1
19	600091	CHECKSTOP PLUNGER	1
20	600234	SPRING FOR CHECKSTOP	1
21	600120	O-RING (#111) #77035-R .424"ID	1
22	600093	CHECKSTOP STEM	1
23	600768	O-RING (#019)	1
24	600092	CHECKSTOP NUT	1
25	600089	STOP ASSEMBLY	1

	Willoughby Industries, Inc. Indianapolis, Indiana		TITLE / DESC.: MECHANICAL SELF CLOSING SINGLE TEMP LAVATORY VALVE ASSEMBLY MODEL # WSC1B		PART #: 920040	
	TOLERANCES EXCEPT AS NOTED		2 PLCS: ±0.03 3 PLCS: ±0.015 FRACTIONS: ±1/32" ANGLE: ±1°	SIZE: A SCALE: 1:1	MATL: REF.:	REVISION: A ORIG.: JBU 12/14/01 REV.: NAL 3/1/18