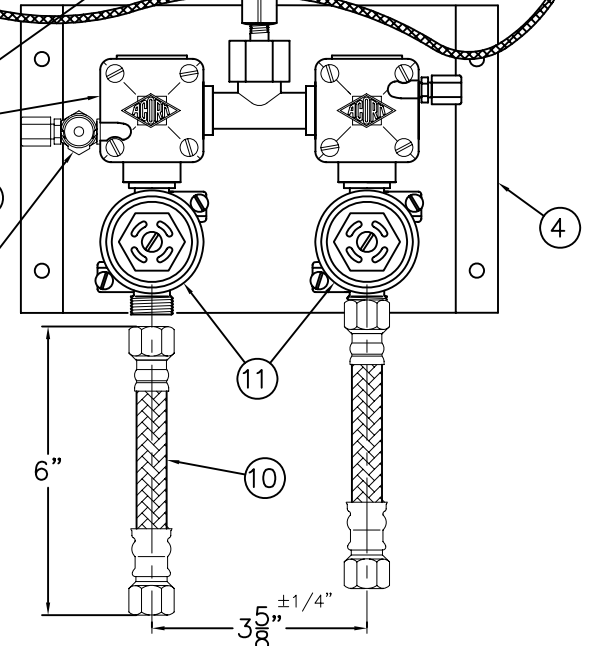


REFERENCE DRAWINGS	
ASSEMBLIES	NUMBER
VALVE BODY	9955-005-003
CHECKSTOP	9956-040-003
FIXTURE TRIM	9957-050-001
-PBH/BPH TRIM	9957-060-001
AIR-CONTROL SERVOMOTORS	
METERING	9955-000-003
NON-METERING	9955-001-003

NOTE:  
THIS VALVE  
SHOWN w/ (-MH)  
METERING, HOT  
SIDE ONLY



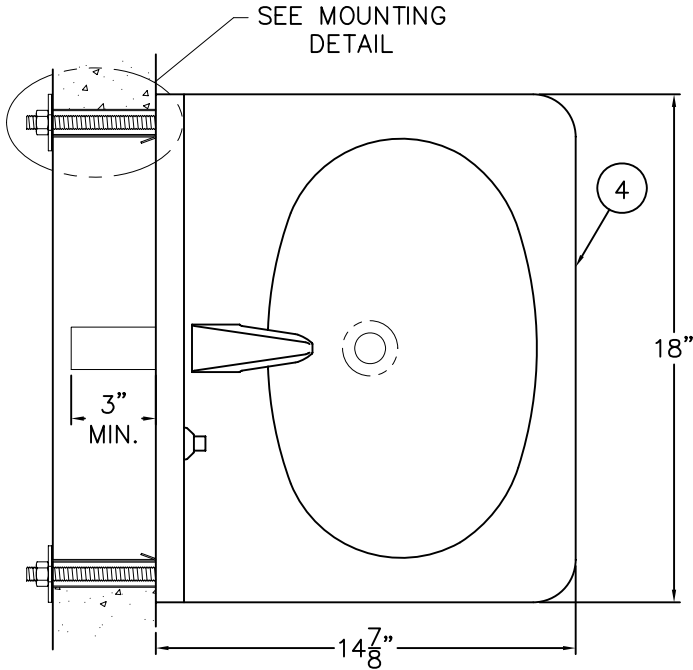
NOTE:  
MAXIMUM RECOMMENDED WORKING WATER PRESSURE IS 100 PSI; TEMPERATURE IS 130° F; OUTLET TEMPERATURE IS RECOMMENDED AT A MAXIMUM OF 105° F.  
WARNING:  
PRIOR TO MAKING INSTALLATION, SUPPLY LINES MUST BE FLUSHED OF ALL FOREIGN MATERIAL SUCH AS PIPE DOPE, CHIPS, SOLDER, ETC. VALVE MUST BE DRAINED PRIOR TO BEING SUBJECTED TO FREEZING TEMPERATURES. MAXIMUM RECOMMENDED OUTLET WATER TEMPERATURE IS 105° F.

**INSTALLATION INSTRUCTIONS:**

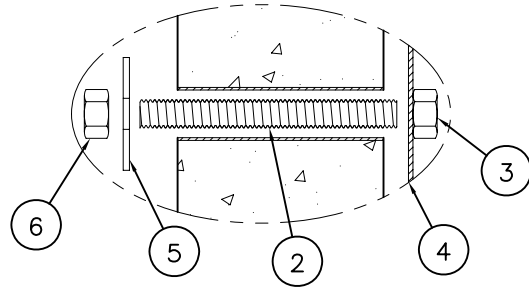
- A- PRIOR TO INSTALLATION OF THE FIXTURE, MOUNT PUSHBUTTONS ① AND BUBBLER ② TO THE BACKSPLASH.
- B- INSTALL THE PLUMBING FIXTURE TO THE WALL INCLUDING UPPER SUPPORT PLATE ③.
- C- MOUNT THE AIR-CONTROL VALVE ASSEMBLY ④. LOCATE AS REQUIRED. MAXIMUM ALLOWABLE DISTANCE BETWEEN PUSHBUTTON ① AND AIR-CONTROL SERVOMOTOR ⑤ IS 10 FEET. WALL ANCHORING HARDWARE ARE BY OTHERS.
- D- CONNECT 1/8" O.D. POLYETHYLENE AIR LINES ⑥ TO PUSHBUTTONS ① AND SERVOMOTOR ⑤. HAND TIGHTEN USING FERRULE NUTS PROVIDED. SEE DETAIL A. NOTE: WHEN METERING VALVES ARE SPECIFIED, AIR LINES CONNECT DIRECTLY TO VALVE TIMER ⑦.
- E- CONNECT 1/4" O.D. POLYETHYLENE WATER LINE ⑧ TO BUBBLER ② AND COMPRESSION NUT ⑨. HAND TIGHTEN USING FERRULE NUTS PROVIDED.

- F- AFTER THOROUGHLY FLUSHING THE SUPPLY LINES, MAKE-UP 1/2" NPS FEMALE SUPPLY CONNECTIONS. NOTE: SUPPLY INLET CONNECTION WILL ACCOMODATE 1/2" NPT MALE ADAPTER. THREAD FLEX CONNECTOR HOSE ⑩ TO CHECKSTOPS ⑪ AND TO SUPPLY STUB OUTS.
- G- SEE APPROPRIATE SERVOMOTOR REFERENCE DRAWING FOR DETAILS AND TIMING INSRUCTIONS.

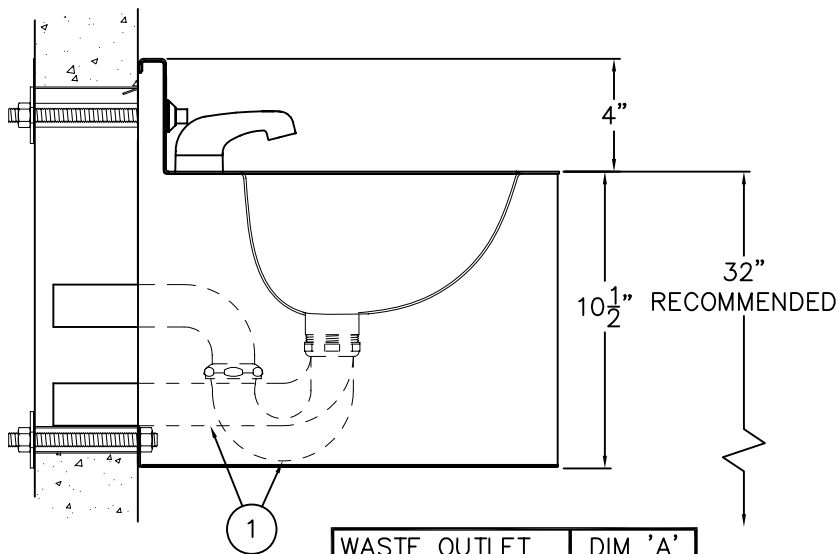
ACORN ENGINEERING COMPANY P.O. BOX 3527 INDUSTRY, CA. 91744 (626) 336-4561 FAX (626) 961-2200	TITLE <b>(04-SERIES) HOT &amp; COLD AIR-CONTROL VALVE ASSEMBLY - NEW STYLE</b>		
	MANUFACTURE DATE <b>SEPT 1995 TO PRESENT</b>	DATE ISSUED <b>11/1/95</b> DATE REVISED <b>07/15/10</b>	DRAWING NUMBER <b>9905-000-003</b>



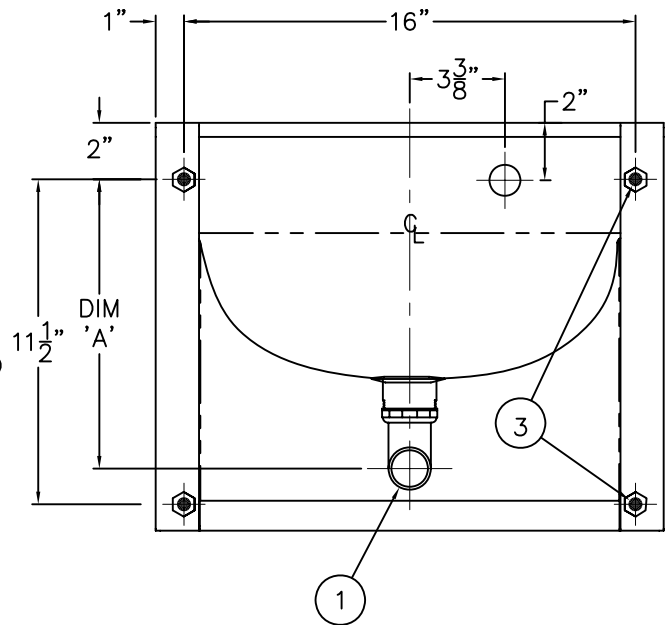
<b>REFERENCE DRAWINGS</b>	
-3 AIR-CONTROL (SINGLE-TEMP)	9905-001-003
-SW SLEEVE / -MT TEMPLATE	9925-211-001
HARDWARE PACKAGE	9957-900-001
IN-SINKERATOR INSTALL	9925-153-001



**MOUNTING DETAIL**



WASTE OUTLET	DIM 'A'
ELBOW	10-1/4"
P-TRAP (-PT)	6-3/4"



**INSTALLATION INSTRUCTIONS**

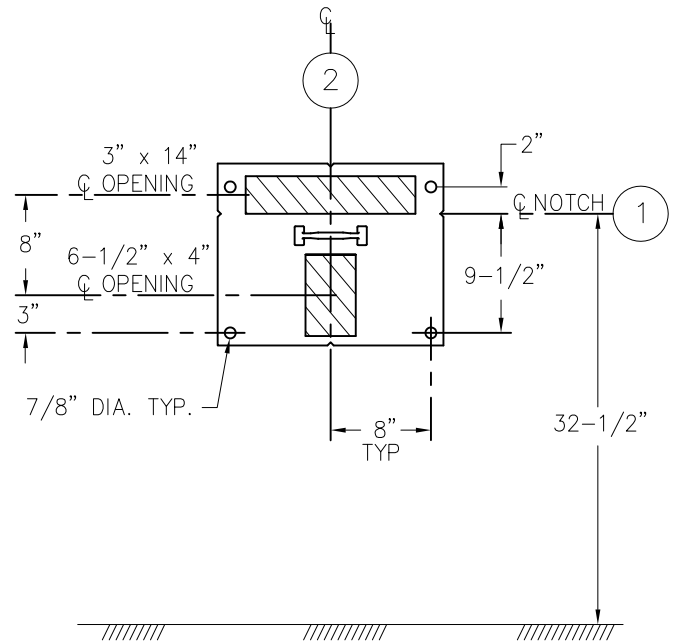
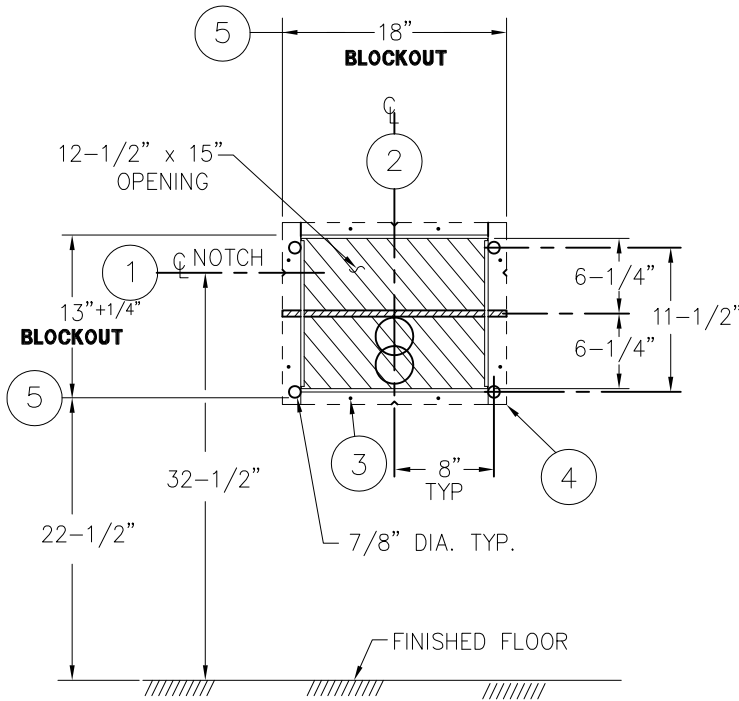
- A-ROUGH-IN FOR 1-1/2" O.D. ① PLAIN END WASTE OUTLET.
- B-THREAD 1/2"-13 UNC STUDS ② INTO MOUNTING POINTS ③ AT REAR OF FIXTURE. STUDS ② MUST HAVE MINIMUM 1/2" ENGAGEMENT.
- C-PLACE LAVY ④ AGAINST WALL, SLIDING STUDS ② THRU SLEEVE OR WALL OPENINGS.

- D- THREAD WASHERS ⑤ AND NUTS ⑥ ONTO STUDS ②. TIGHTEN TO 60 FT/LBS.
- E- MAKE-UP LAVY WASTE CONNECTION - 1-1/2" O.D. PLAIN END.
- F- SEE DRAWING 9905-001-003 FOR PUSHBUTTON AND BUBBLER INSTALLATION.



ACORN ENGINEERING COMPANY  
P.O. BOX 3527 INDUSTRY, CA. 91744  
(626) 336-4561 FAX (626) 961-2200

TITLE		
<b>18' RECTANGULAR LAVY - CAFE LAV - NEW STYLE - CAT. #1658</b>		
MANUFACTURE DATE	DATE ISSUED	DRAWING NUMBER
<b>APRIL 1998</b>	<b>3/30/98</b>	<b>9925-151-003</b>
<b>TO PRESENT</b>	DATE REVISED	
	<b>11/07/11</b>	



**WALL SLEEVE (-SW)    BOTH VIEWS ARE FROM CELL SIDE    METAL TEMPLATE (-MT)**

RIGHT HAND FIXTURE ROUGH-INS SHOWN, LEFT HAND FIXTURE OPPOSITE



SHADED AREAS ARE REQUIRED WALL OPENINGS

**WALL SLEEVE**

SLEEVES ARE INSTALLED IN FORMS (USING NAIL HOLES (3) PROVIDED) OR GROUTED INTO BLOCK WALLS, BECOMING A PERMANENT PART OF WALL.

- A. INSTALL SLEEVE WITH FLANGE (4) ON CHASE SIDE OF WALL.
- B. LOCATE TOP AND BOTTOM NOTCHES AT VERTICAL CENTERLINE (2) OF PLUMBING FIXTURE.
- C. LOCATE SIDE NOTCHES (1) AT DIMENSION SHOWN, MEASURED FROM THE FINISHED FLOOR ON CELL (FIXTURE) SIDE.

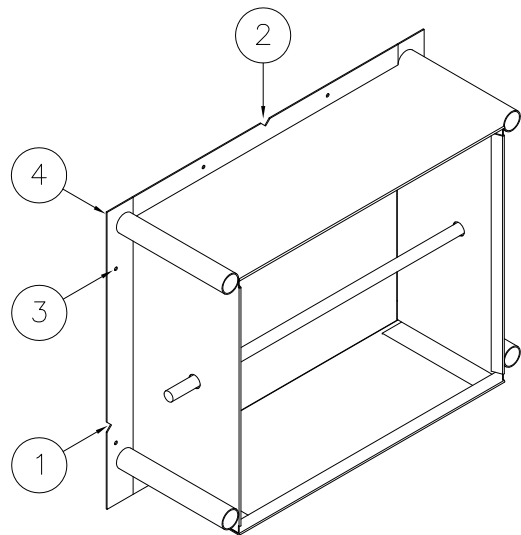
**NOTES:**

- 1. FOR POURED WALL CONSTRUCTION, TEMPORARY BRACING SHOULD BE INSTALLED WITHIN SLEEVE OPENING TO PREVENT DEFORMATION TO SLEEVE WHICH MAY OCCUR DURING POUR. DO NOT POUR CONCRETE DIRECTLY ON TOP OF WALL SLEEVE.
- 2. WHEN SLEEVES ARE NOT AVAILABLE BLOCKOUT FOR SLEEVE OPENING IN WALL PER DIMENSIONS SHOWN (5).

**METAL TEMPLATES (-MT)**

TEMPLATES ARE USED TO LAYOUT REQUIRED WALL OPENINGS FOR SUBSEQUENT FLAME CUTTING OR CORE DRILLING.

- A. STRIKE A HORIZONTAL CHALKLINE (1) ON THE WALL AT DIMENSION SHOWN, MEASURED FROM THE FINISHED FLOOR ON CELL (FIXTURE) SIDE. THIS WILL LOCATE CENTERLINE FOR HORIZONTAL NOTCHES ON TEMPLATE.
- B. STRIKE A VERTICAL CHALKLINE (2) ON THE WALL TO INDICATE CENTERLINE OF FIXTURE. THIS WILL LOCATE CENTERLINE FOR VERTICAL NOTCHES ON TEMPLATE.
- C. PLACE TEMPLATE AGAINST WALL. LOCATE NOTCHES ALONG CHALKLINES. MARK WALL FOR REQUIRED OPENING.



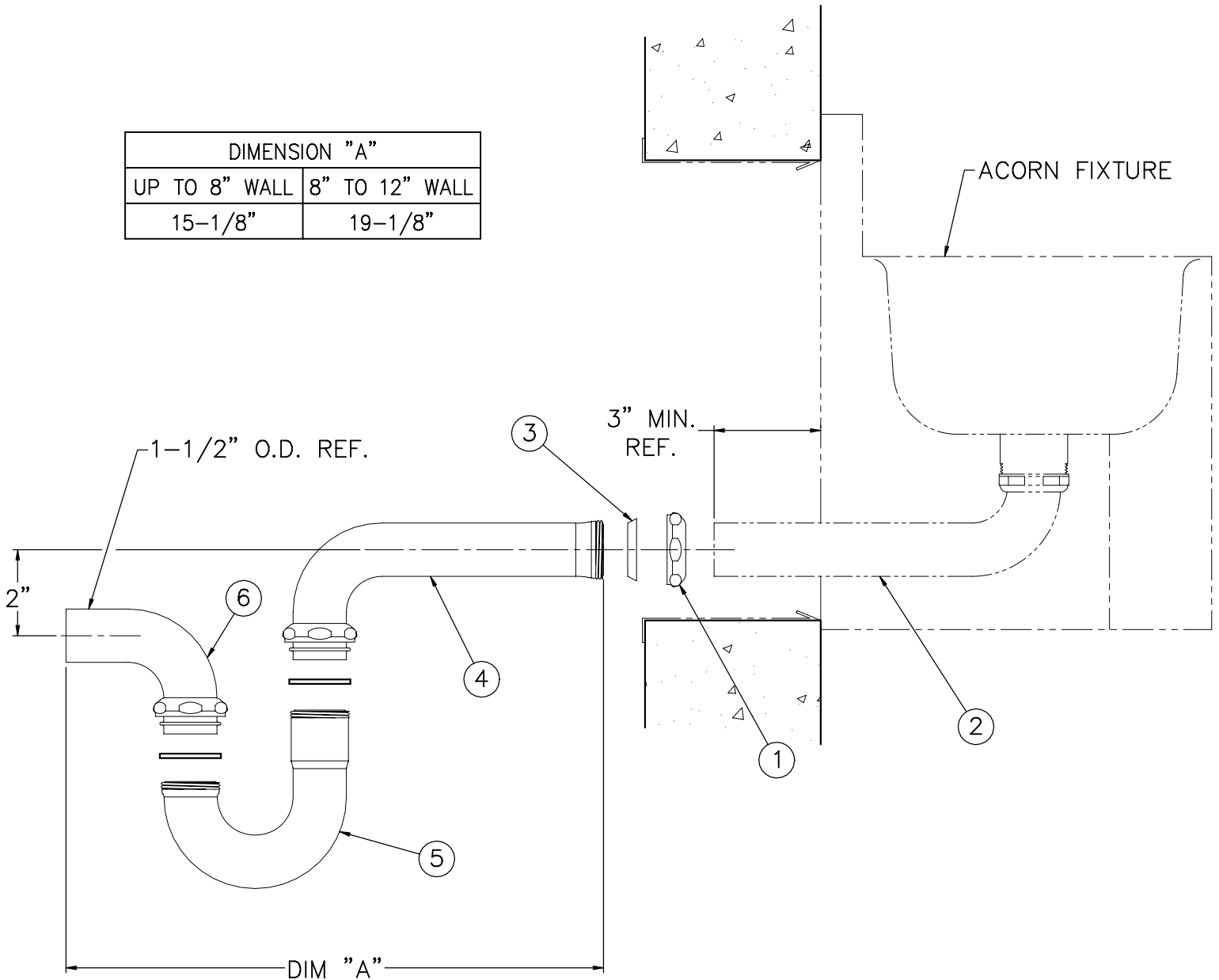
**WALL SLEEVE (-SW)**



TITLE <b>-SW SLEEVE, -MT TEMPLATE - CAT. *1655\1655-VAC, 1657\1657-VAC &amp; 1658</b>		
MANUFACTURE DATE <b>JUNE 1971 TO PRESENT</b>	DATE ISSUED <b>3-1-90</b>	DRAWING NUMBER <b>9925-211-001</b>
	DATE REVISED <b>5/18/16</b>	



DIMENSION "A"	
UP TO 8" WALL	8" TO 12" WALL
15-1/8"	19-1/8"



**INSTALLATION INSTRUCTIONS:**

A- AFTER INSTALLING ACORN UNIT ON FINISHED WALL, SLIP COMPRESSION NUT ① OVER 1-1/2" O.D. PLAIN END WASTE ②. USING COMPRESSION GASKET ③, AND NUT ① MAKE-UP COMPRESSION CONNECTION WITH SLIP JOINT ELBOW ④.

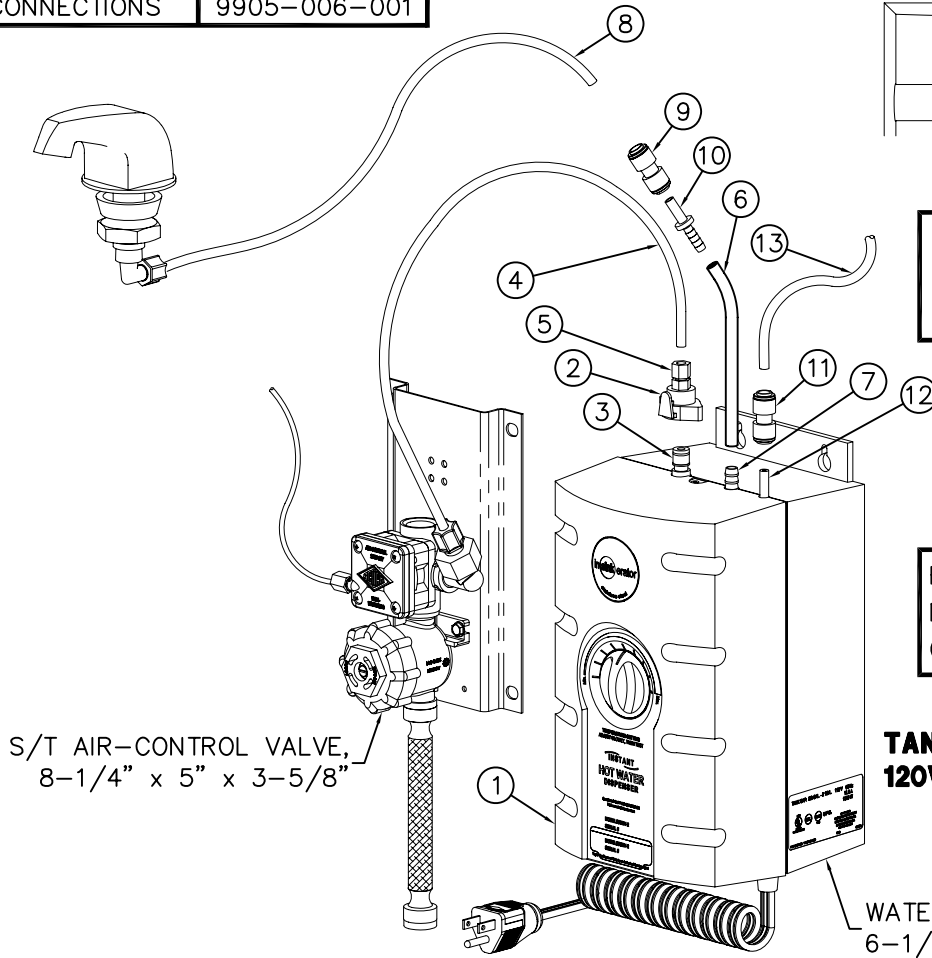
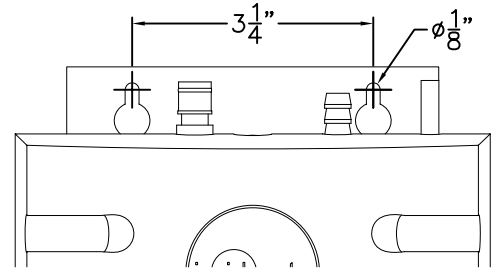
B- REMOVABLE TUBULAR P-TRAP ⑤ CONNECTS TO SLIP JOINT ELBOW ④ AND PLAIN END ELBOW ⑥ WITH COMPRESSION CONNECTIONS AS SHOWN.

NOTE: TUBULAR P-TRAP IS REMOVABLE IN ORDER TO ALLOW FOR WASTE CLEANOUT.

<p><b>ACORN ENGINEERING COMPANY</b> P.O. BOX 3527 INDUSTRY, CA. 91744 (626) 336-4561 FAX (626) 961-2200</p>	<p>TITLE <b>LAVATORY THRU-WALL WASTE CONNECTION w/ P-TRAP &amp; CLEANOUT CAT. # -LW1</b></p>	
	<p>MANUFACTURE DATE <b>APRIL 30, 1998</b> <b>TO PRESENT</b></p>	<p>DATE ISSUED <b>3/19/98</b></p> <p>DATE REVISED <b>4/23/98</b></p>



REFERENCE DRAWINGS	
1658 INSTALL	9925-151-003
S/T AIR-CONTROL	9905-001-003
VALVE CONNECTIONS	9905-006-001



S/T AIR-CONTROL VALVE,  
8-1/4" x 5" x 3-5/8"

\*PROVISION FOR VENT DRAINING IS THE RESPONSIBILITY OF THE INSTALLER.

FIXTURE MUST BE GROUNDED PER N.E.C. (NATIONAL ELECTRICAL CODE).

**TANK SPECIFICATIONS: 1300W, 120VAC, 10.8A, 190°**

WATER HEATER, 11-1/4" x 6-1/4" x 6-1/2"

**INSTALLATION INSTRUCTIONS:**

A- LOCATE WATER HEATER AS CLOSE AS POSSIBLE TO FIXTURE SPOUT. USING TANK AS A TEMPLATE LOCATE AND MARK FOR ANCHORING HARDWARE BY OTHERS KEEPING UNIT (1) VERTICAL & LEVEL.

B- PLACE THE SNAP-TO-CONNECT SOCKET FITTING (2) ONTO THE PLASTIC O-RING CONNECTION (3) FITTING (LEFT SIDE) ON THE TANK PUSHING UNTIL IT CLICKS IN PLACE.

C- CONNECT 1/4" OD SUPPLY INLET TUBING (4) FROM VALVE TO COMPRESSION FITTING (5) ON SOCKET FITTING (2) AS SHOWN. FYI: 1/4" INLET TUBING (4) MAY BE CUT TO FIT.

D- SLIP THE FLEXIBLE CLEAR 5/16" OD TUBING (6) OVER BARBED MIDDLE FITTING (7) AND SLIDE DOWN APPROXIMATELY 1/2".

E- FIT AND ATTACH RISER TUBING (8) FROM SPOUT TO 1/4" X 1/4" PUSH-IN CONNECTOR (9). CONNECT PUSH-IN CONNECTOR TO TUBE END OF BARBED FITTING (10).

F- CONNECT 1/4" X 1/4" PUSH-IN CONNECTOR (11) DIRECTLY TO VENT PORT (12) (RIGHT SIDE) AND 1/4" OD VENT TUBING (13).



ACORN ENGINEERING COMPANY  
P.O. BOX 3527 INDUSTRY, CA. 91744  
(626) 336-4561 FAX (626) 961-2200

TITLE <b>IN-SINKERATOR WATER HEATER INSTALL</b>		
MANUFACTURE DATE <b>APRIL, 1998 TO PRESENT</b>	DATE ISSUED <b>11/01/11</b>	DRAWING NUMBER <b>9925-153-001</b>
	DATE REVISED	