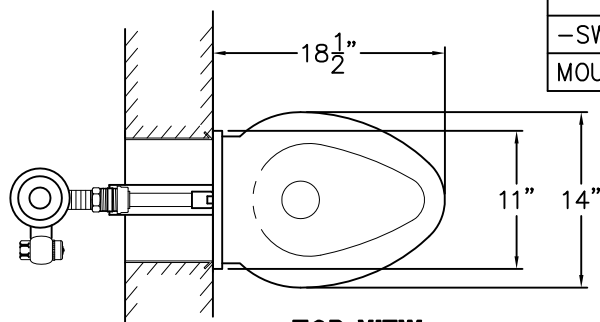


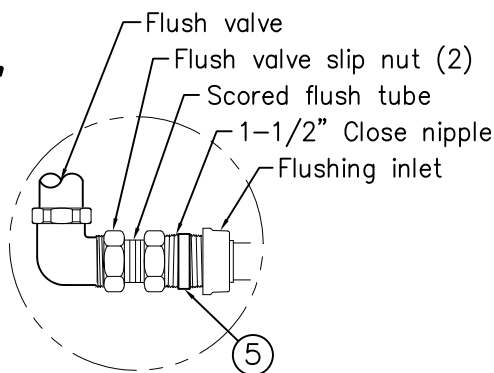


REFERENCE DRAWINGS	
-SW WALL SLEEVE/-MT TEMPLATE	9925-238-001
MOUNTING HARDWARE	9957-900-001

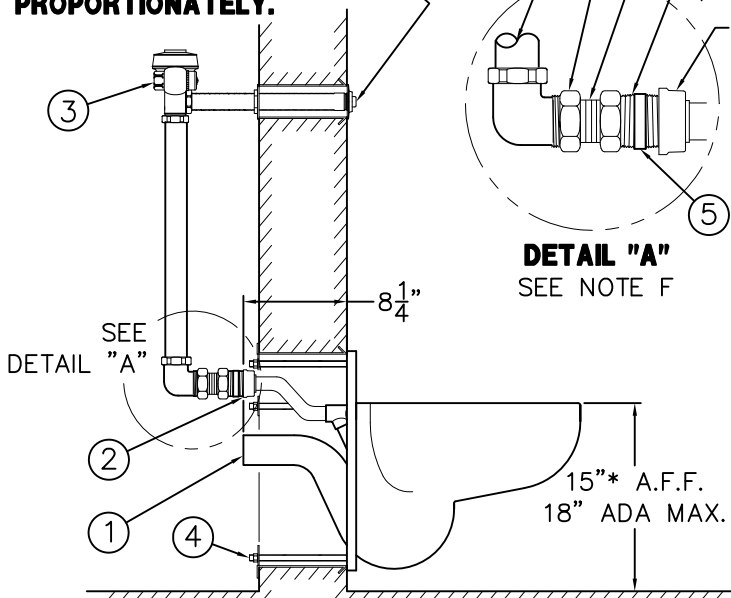


TOP VIEW

**NOTE: FLUSH VALVE WITH 11-3/4" PUSHBUTTON 'L' DIMENSION REQUIRED FOR 0" TO 9" WALL THICKNESS. FOR WALLS OVER 9" INCREASE 'L' DIMENSION PROPORTIONATELY.**



DETAIL "A"  
SEE NOTE F

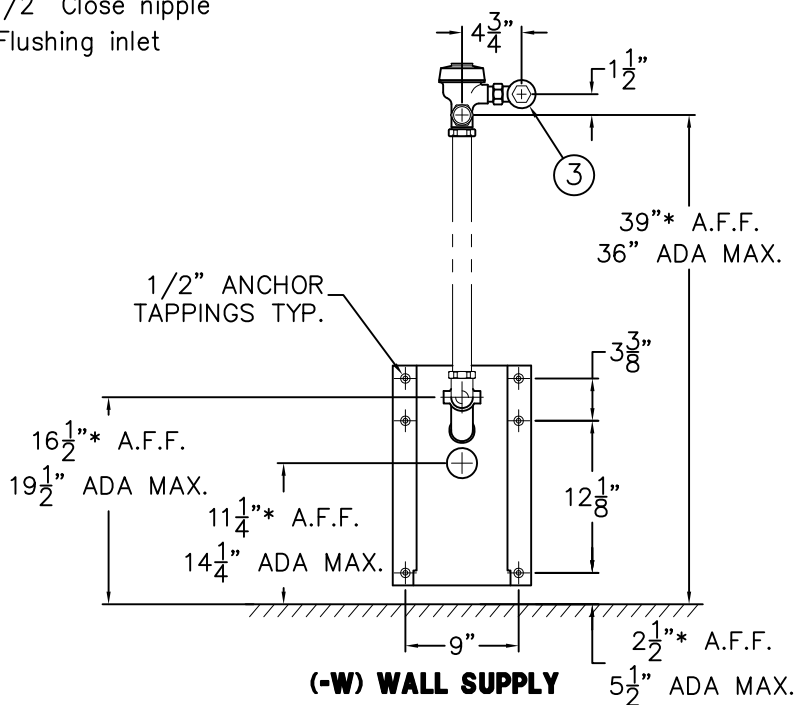


SIDE VIEW

**FOR -ADA MODELS** -FLUSH VALVE MUST BE HYDRAULICALLY ACTUATED OR SUPPLIED WITH A SPECIAL HANDLE. MAX. CONTROL HEIGHT IS 36" ABOVE FINISHED FLOOR. CONTROLS MUST BE LOCATED ON WIDE SIDE OF TOILET.

**NOTE: REFER TO A.D.A. ACCESSIBILITY GUIDELINES FOR COMPLETE INSTALLATION REQUIREMENTS.**

NOTE: FOR UNITS WITH SUFFIX OPTION -ADA, ALL VERTICAL DIMENSIONS INDICATED \* WILL INCREASE PROPORTIONALLY WITH ADA SEAT HEIGHT.



(-W) WALL SUPPLY  
REAR VIEW

**INSTALLATION INSTRUCTIONS:**

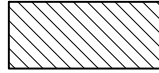
- A- SEE REFERENCE DRAWING BOX FOR WALL SLEEVE INSTALLATION INSTRUCTIONS (SUFFIX OPTION -SW).
- B- ROUGH-IN PLUMBING FOR THE FOLLOWING CONNECTIONS:
  - TOILET WALL WASTE OUTLET 2-3/8" O.D. PLAIN END ①.
  - SUFFIX OPTION -W03 3" O.D. PLAIN END WASTE ①.
  - FLUSHING INLET CONNECTION 1-1/2" NPT ②.
  - FLUSH VALVE SUPPLY INLET 1" NPT ③.
- C- INSTALL 1/2"-13 ALL THREAD STUDS ④ INTO ANCHOR TAPPINGS AT REAR OF FIXTURE. STUDS MUST HAVE A MINIMUM 1/2" ENGAGEMENT.

- D- PLACE TOILET UP AGAINST CELL WALL, SLIDING THE STUDS THROUGH WALL SLEEVE OPENINGS. **NOTE:** IT MAY BE NECESSARY TO SUPPORT OFF-FLOOR FIXTURES ON CELL SIDE OF WALL TO SECURE PROPERLY FROM PIPE CHASE.
- E- PLACE WASHERS AND NUTS ONTO STUDS ④: TIGHTEN TO 60FT/LBS.
- F- FLUSH SUPPLY LINE. MAKE-UP WASTE CONNECTION AND MOUNT FLUSH VALVE PER MANUFACTURERS' RECOMMENDATIONS. **NOTE:** FLUSH VALVE MUST HAVE A 11-3/4" PUSHBUTTON 'L' DIMENSION. CONNECTION TO FLUSHING INLET IS 1-1/2" NPT (CLOSE) PIPE NIPPLE ⑤, FOR 0" TO 9" WALL (SUFFIX OPTION -FVT) SEE DETAIL.

ACORN ENGINEERING COMPANY P.O. BOX 3527 Industry, CA 91744 15125 Proctor Ave Industry, CA 91746 (626) 336-4561 FAX (626) 961-2200	TITLE <b>COMPACT BLOWOUT JET TOILET - OFF-FLOOR - CAT. #1679 / 1679-ADA -W</b>		
	MANUFACTURE DATE	DATE ISSUED	DRAWING NUMBER
	<b>OCT. 17, 1997</b>	<b>8/18/97</b>	<b>9925-041-003</b>
	<b>TO PRESENT</b>	DATE REVISED <b>07/29/13</b>	

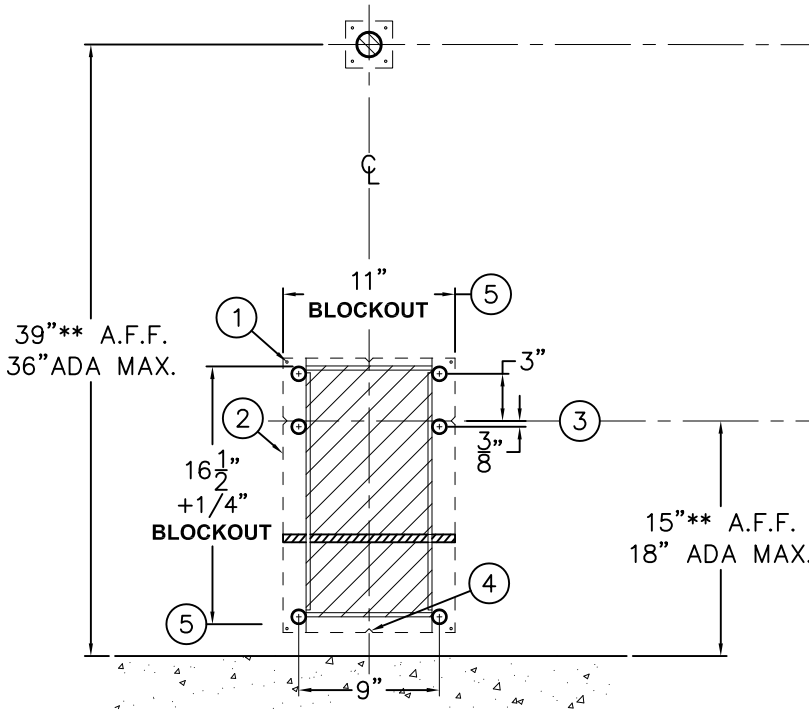


ALL VERTICAL DIMENSIONS INDICATED \*\* INCREASE PROPORTIONATELY WITH ADA SEAT HEIGHT. FOR ADA 18" SEAT HEIGHT, -W FLUSHING INLET BECOMES 19-1/2" AFF.

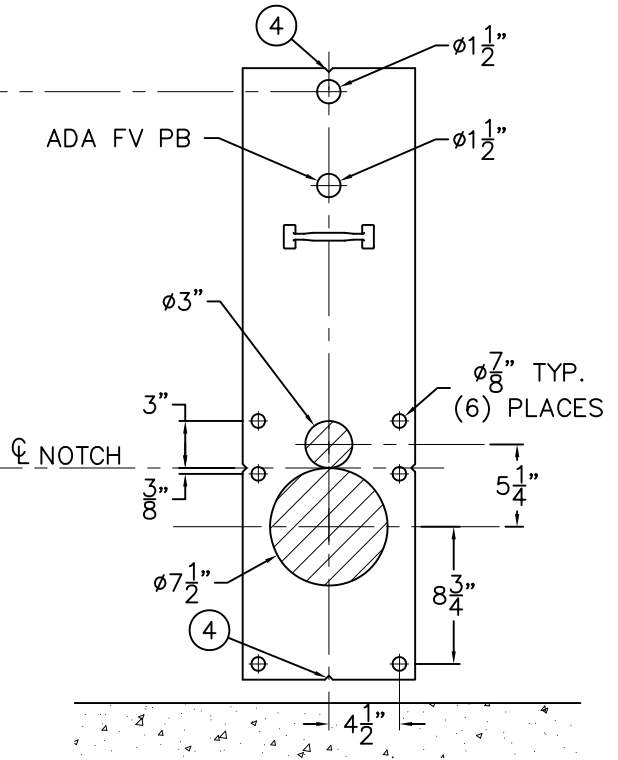


SHADED AREAS ARE REQUIRED WALL OPENINGS

**VIEW FROM FIXTURE / CELL SIDE**



**WALL SLEEVE (-SW)**



**METAL TEMPLATES (-MT)**

**-SW WALL SLEEVES INSTALLATION INSTRUCTIONS:**

SLEEVES ARE INSTALLED IN FORMS USING NAIL HOLES ① PROVIDED OR GROUTED INTO BLOCK WALLS, BECOMING A PERMANENT PART OF THE WALL.

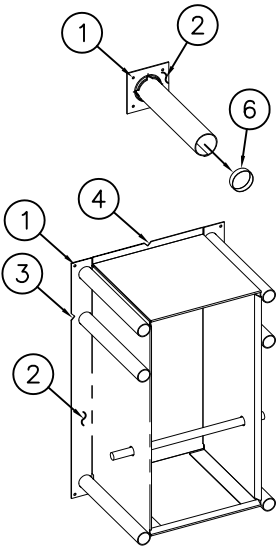
NOTE: FOR POURED WALL CONSTRUCTION, TEMPORARY BRACING SHOULD BE INSTALLED WITHIN OPENING TO PREVENT DEFORMATION TO SLEEVE WHICH MAY OCCUR DURING POUR. DO NOT POUR CONCRETE DIRECTLY ON TOP OF WALL SLEEVE. THE PUSHBUTTON SLEEVE IS CAPPED; THIS CAP ⑥ MUST BE REMOVED FROM THE CHASE SIDE OF THE WALL BEFORE INSTALLING FLUSH VALVE PUSHBUTTON.

- A- INSTALL SLEEVE WITH FLANGE ② ON CHASE SIDE OF WALL.
- B- SIDE NOTCHES ③ INDICATE INTEGRAL SEAT HEIGHT LOCATED 15" ABOVE FINISHED FLOOR ON CELL SIDE.
- C- VERTICAL OR TOP AND BOTTOM ④ NOTCHES INDICATE VERTICAL CENTERLINE OF SLEEVE OR TOILET FIXTURE.
- D- USE BLOCK OUT DIMENSIONS ⑤ SHOWN WHEN SLEEVES ARE NOT AVAILABLE.

**-MT METAL TEMPLATES INSTALLATION INSTRUCTIONS:**

METAL TEMPLATES ARE USED TO LAYOUT REQUIRED WALL OPENINGS FOR SUBSEQUENT CORE DRILLING OR FLAME CUTTING.

- A- MEASURE FROM THE FINISHED FLOOR ON CELL SIDE AND STRIKE A HORIZONTAL CHALK LINE ON THE WALL AT DIMENSIONS SHOWN TO INDICATE INTEGRAL SEAT HEIGHT ③.
- B- STRIKE A VERTICAL CHALK LINE AT DIMENSIONS SHOWN TO INDICATE VERTICAL CENTERLINE ④ OF SLEEVE OR FIXTURE.
- C- PLACE TEMPLATE AGAINST WALL ALIGNING VERTICAL AND HORIZONTAL NOTCHES WITH CHALK LINES AND MARK REQUIRED WALL OPENINGS.



ACORN ENGINEERING COMPANY  
P.O. BOX 3527 Industry, CA 91744  
15125 Proctor Ave Industry, CA 91746  
(626) 336-4561 FAX (626) 961-2200

TITLE **SLEEVES AND TEMPLATES (CAT. #1679) (CAT. 1679-ADA) (CAT. 1679-VAC)**

MANUFACTURE DATE

**DEC 1974  
TO PRESENT**

DATE ISSUED

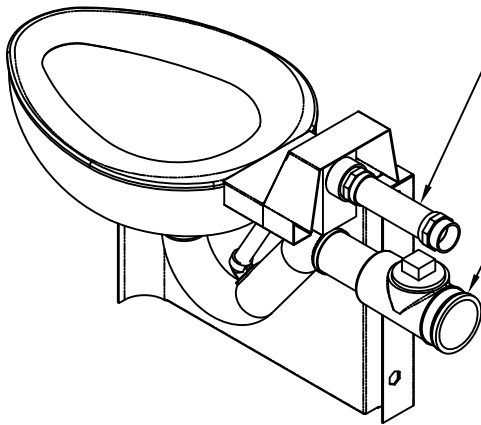
**03/01/90**

DATE REVISED

**04/03/13 C**

DRAWING NUMBER

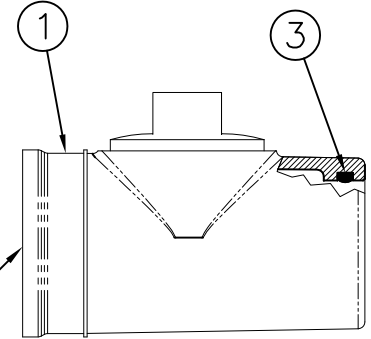
**9925-238-001**



Optional -FVT Flush Valve Thru Wall Connection. Shown For Reference.

Optional -CO1 Waste Fitting. Shown For Reference.

REFERENCE DRAWING	
WASTE CONNECTION WITH CLEANOUT -CO1	9985-125-002

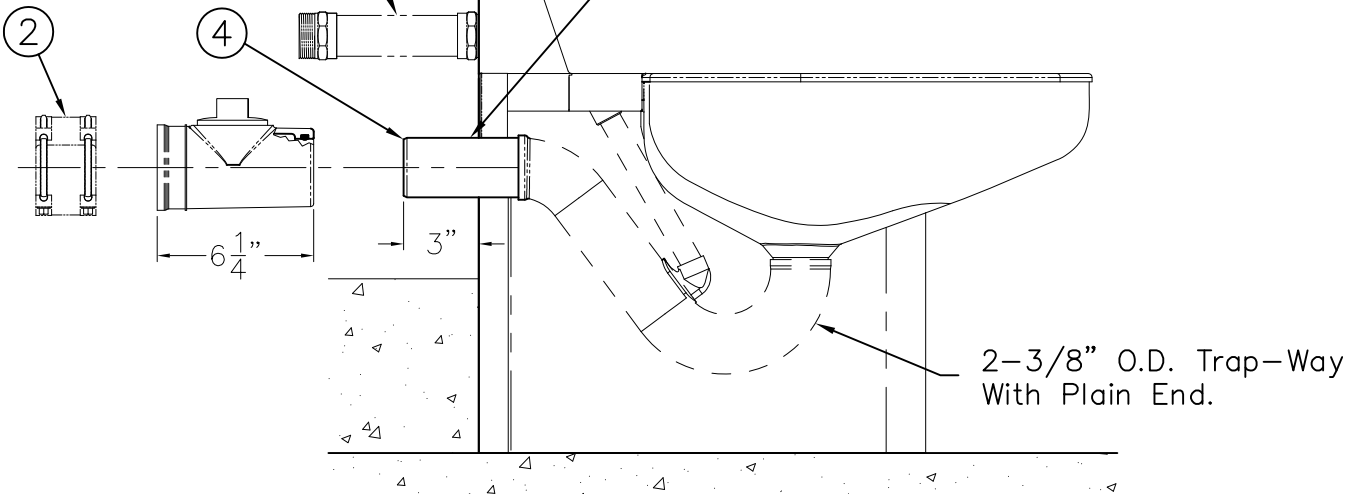


NOTE: Optional -CO1 Waste Fitting Available With 3" or 4" No-Hub

*Scaled: X 2*

Optional -FVT Flush Valve Thru Wall Connection Shown For Reference

Plain End Extends 3" Beyond Back Of Fixture. Optional Extended Waste Is Available -TWE



**MODEL #1685 SHOWN FOR REFERENCE**

**INSTALLATION INSTRUCTIONS**

A-INSERT O-RING ③ INTO GROOVE OF WASTE FITTING ①. LUBRICATE THE O-RING ③ WITH O-RING LUBRICANT.

B-INSTALL WASTE FITTING ① TO FIXTURE P-TRAP WASTE EXTENSION ④. ENGAGEMENT IS APPROXIMATELY 1-1/4". NOTE: TOILET WASTE

EXTENSION ④ IS 3" BEYOND BACK OF FIXTURE. LONGER WASTE EXTENSION IS AVAILABLE.

C-MAKE UP WASTE FITTING CONNECTION TO WASTE PIPING USING NO-HUB (BAND) CONNECTOR ② BY OTHERS.

**ACORN ENGINEERING COMPANY**  
P.O. BOX 3527 INDUSTRY, CA. 91744  
(626) 336-4561 FAX (626) 961-2200

TITLE **NO-HUB WASTE CONNECTION WITH CLEANOUT -CO1**

MANUFACTURE DATE

**JULY 1975**  
**PRESENT**

DATE ISSUED

**1/29/96**

DATE REVISED

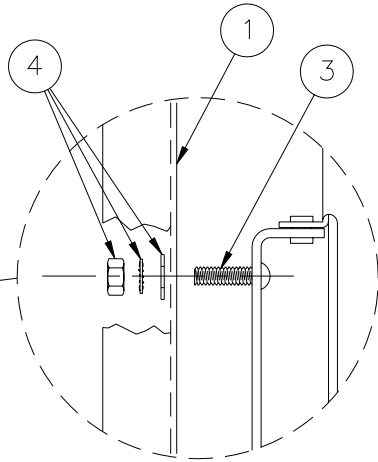
**11/08/13 D**

DRAWING NUMBER

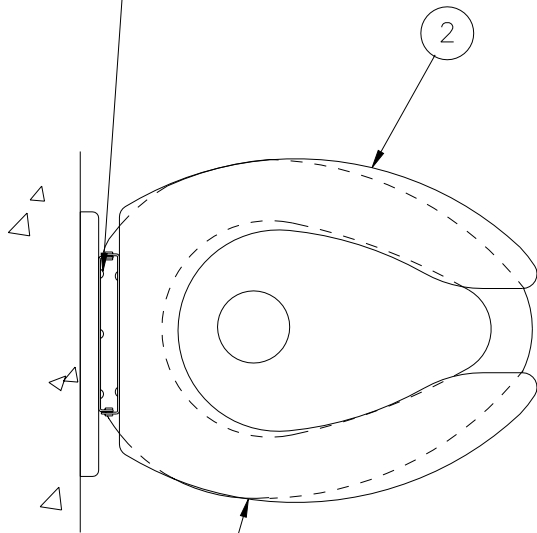
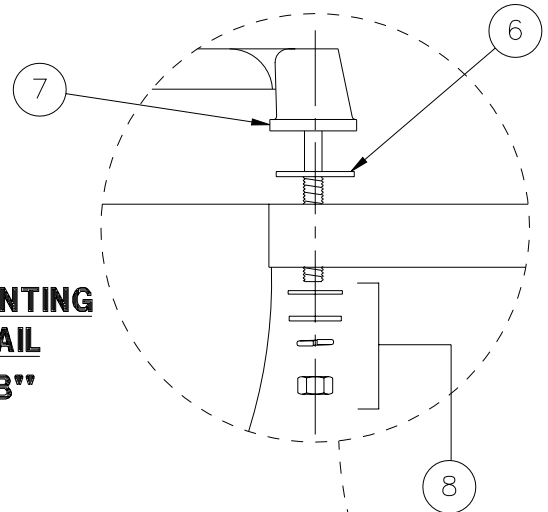
**9925-054-001**



**MOUNTING  
DETAIL  
"A-A"**

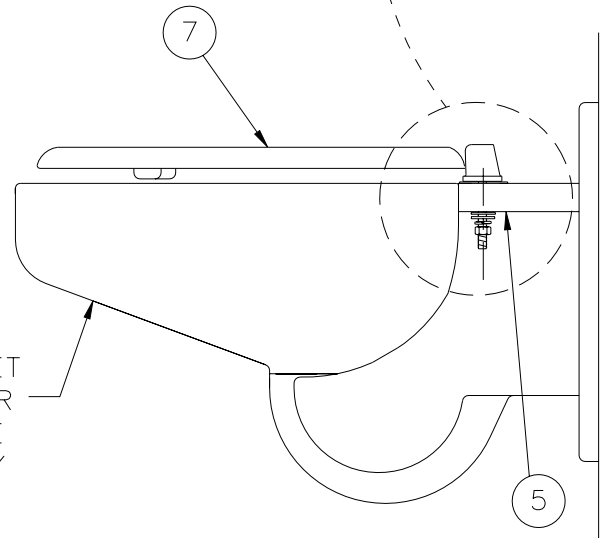


**MOUNTING  
DETAIL  
"B-B"**



1679 TOILET  
SHOWN FOR  
REFERENCE  
ONLY

1675 TOILET  
SHOWN FOR  
REFERENCE  
ONLY



**INSTALLATION INSTRUCTIONS-COMBY AND 1679 TOILET  
PRIOR TO MOUNTING FIXTURE ON WALL:**

- A- LOCATE HINGED SEAT MOUNTING HOLES ON FIXTURE ①.
- B- POSITION HINGED SEAT ② AGAINST UNIT ① BY INSERTING SCREWS ③ INTO MOUNTING HOLES.
- C- ASSEMBLE NUT, WASHER AND LOCK-WASHER ④ AS SHOWN IN MOUNTING DETAIL "A-A".

**INSTALLATION INSTRUCTIONS-TOILETS  
PRIOR TO MOUNTING FIXTURE ON WALL:**

- A- LOCATE HINGED SEAT MOUNTING HOLES IN FIXTURE ⑤.
- B- INSERT WASHERS ⑥ BETWEEN TOP OF TOILET AND HINGE SEAT ⑦.
- C- POSITION HINGED SEAT ⑦ ON TOP OF UNIT.
- D- ASSEMBLE HARDWARE ⑧ AS SHOWN IN MOUNTING DETAIL "B-B"



**ACORN ENGINEERING COMPANY**  
P.O. BOX 3527 INDUSTRY, CA. 91744  
(626) 336-4561 FAX (626) 961-2200

TITLE **-HS HINGED SEAT OPTION INSTALLATION DETAIL - COMBYS AND TOILETS**

MANUFACTURE DATE  
**FEBRUARY 1999**  
**TO PRESENT**

DATE ISSUED  
**02/22/99**  
DATE REVISED  
**03/26/01**

DRAWING NUMBER  
**9925-048-001**