

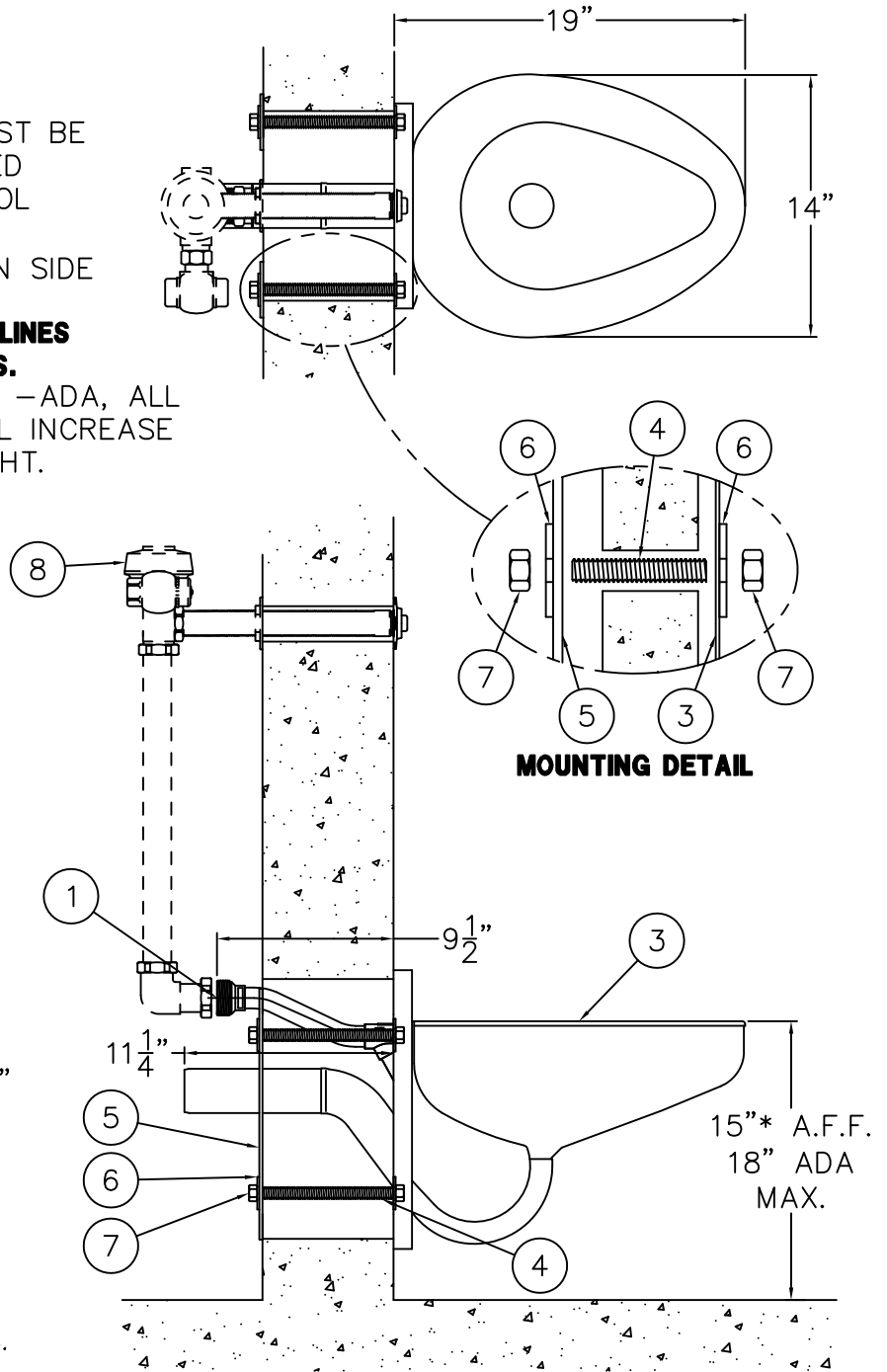
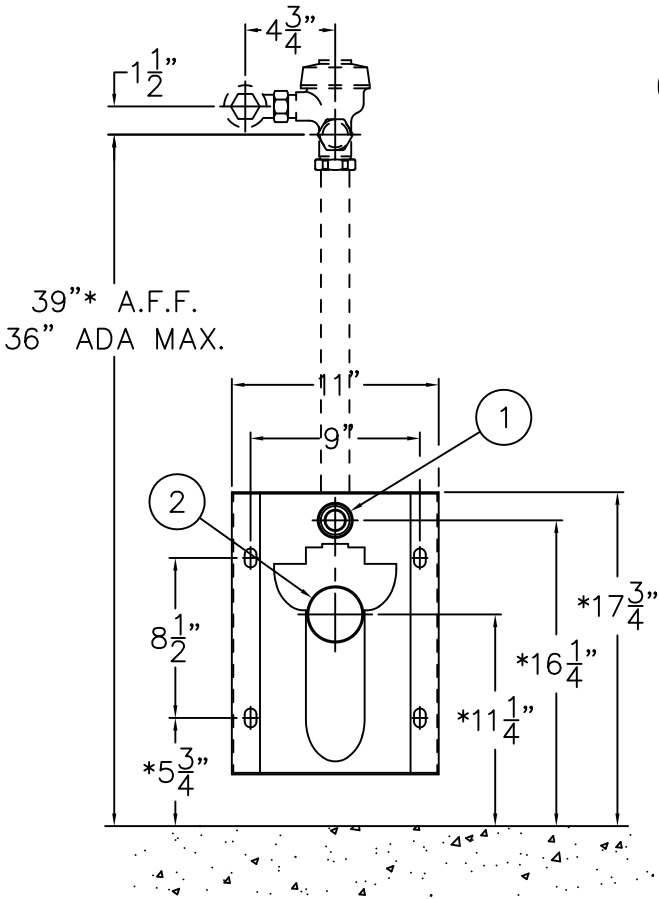


REFERENCE DRAWINGS	
-SW Wall Sleeve	9925-239-002
Hardware Package	9957-900-001

FOR -ADA MODELS -FLUSH VALVE MUST BE HYDRAULICALLY ACTUATED OR SUPPLIED WITH A SPECIAL HANDLE. MAX. CONTROL HEIGHT IS 36" ABOVE FINISHED FLOOR. CONTROLS MUST BE LOCATED ON OPEN SIDE OF TOILET.

NOTE: REFER TO A.D.A. ACCESSIBILITY GUIDELINES FOR COMPLETE INSTALLATION REQUIREMENTS.

NOTE: FOR UNITS WITH SUFFIX OPTION -ADA, ALL VERTICAL DIMENSIONS INDICATED * WILL INCREASE PROPORTIONALLY WITH ADA SEAT HEIGHT.



MOUNTING DETAIL

INSTALLATION INSTRUCTIONS

A-ROUGH-IN FOR:

- 1-1/2" NPT MALE FLUSHING INLET (1).
- 2-3/8" O.D. TOILET WASTE OUTLET (2).

B-PLACE TOILET (3) AGAINST CELL WALL, SLIDING STUDS (4) THROUGH WALL OPENING.

C-PLACE VERTICAL PLATES (5), WASHERS (6), AND NUTS (7) ONTO STUDS (4). TIGHTEN TO 60FT /LBS.

D-FLUSH SUPPLY LINE. CONNECT OPTIONAL -FV FLUSH VALVE (8) PER MANUFACTURERS' RECOMMENDATIONS.



ACORN ENGINEERING COMPANY
P.O. BOX 3527 Industry, CA 91744
15125 Proctor Ave Industry, CA 91746
(626) 336-4561 FAX (626) 961-2200

TITLE **ECONO BLOWOUT JET TOILET - CAT. #1696-W-1**

MANUFACTURE DATE

**APRIL 2003
TO PRESENT**

DATE ISSUED

04/25/03

DATE REVISED

02/06/15

DRAWING NUMBER

9925-039-002

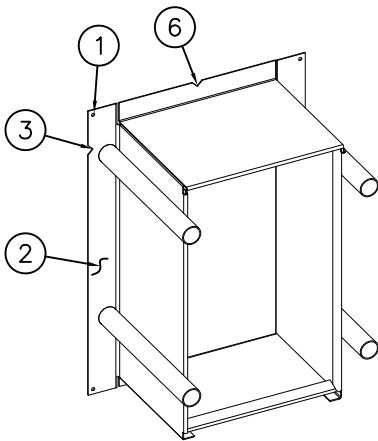
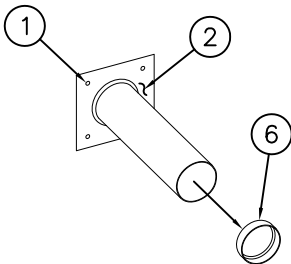
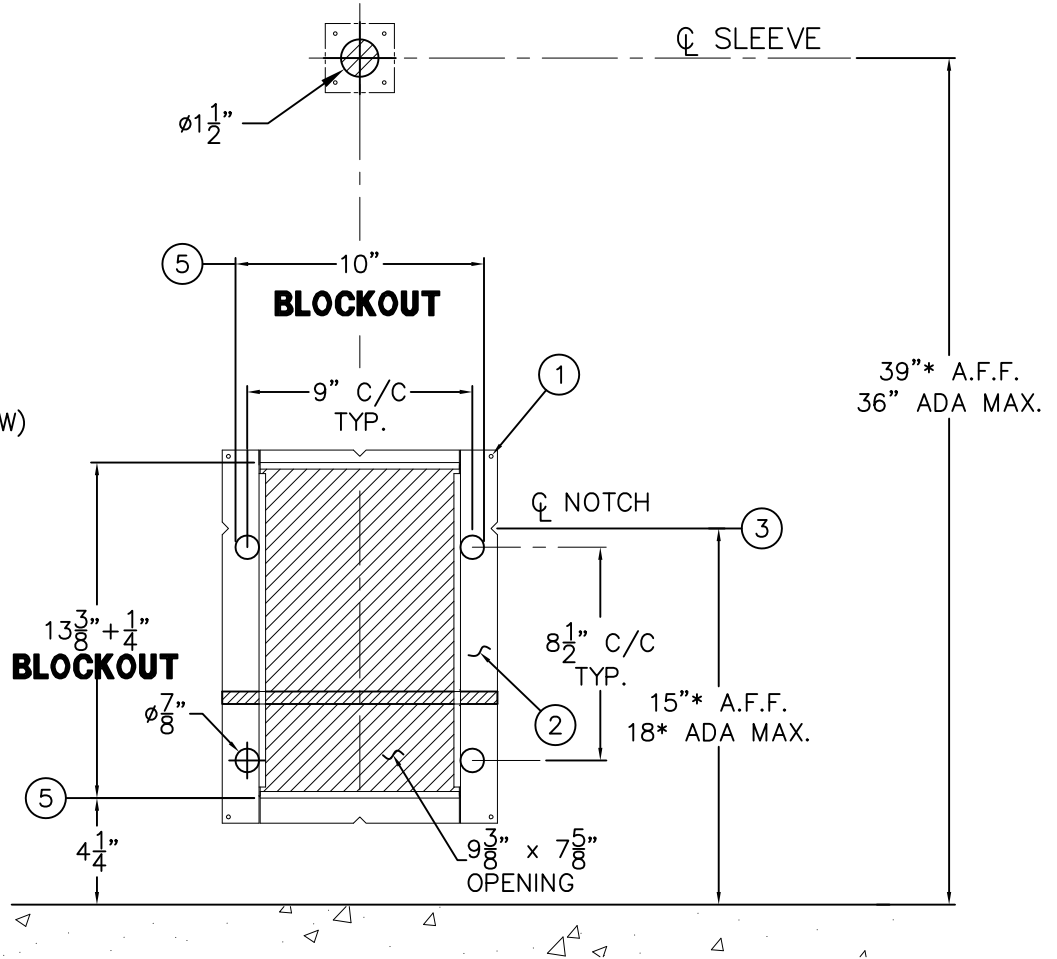


ALL VERTICAL DIMENSIONS INDICATED
* INCREASE PROPORTIONATELY WITH
ADA SEAT HEIGHT.

VIEW IS FROM FIXTURE/CELL SIDE
SHADED AREAS ARE REQUIRED WALL OPENINGS



WALL SLEEVE (-SW)



-SW WALL SLEEVES INSTALLATION INSTRUCTIONS:

SLEEVES ARE INSTALLED IN FORMS USING NAIL HOLES (1) PROVIDED OR GROUTED INTO BLOCK WALLS, BECOMING A PERMANENT PART OF THE WALL.

NOTE:

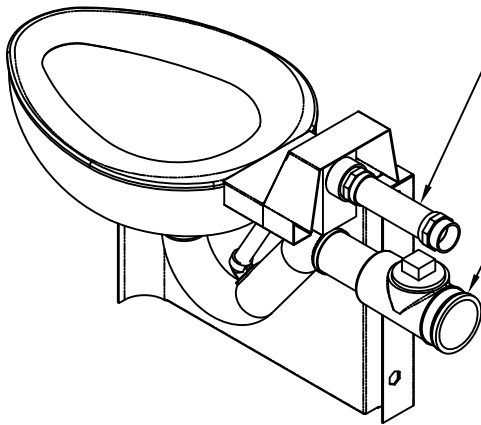
FOR POURED WALL CONSTRUCTION, TEMPORARY BRACING SHOULD BE INSTALLED WITHIN OPENING TO PREVENT DEFORMATION TO SLEEVE WHICH MAY OCCUR DURING POUR. DO NOT POUR CONCRETE DIRECTLY ON TOP OF WALL SLEEVE. THE PUSHBUTTON SLEEVE IS CAPPED; THIS CAP (6) MUST BE REMOVED FROM THE CHASE SIDE OF THE WALL BEFORE INSTALLING FLUSH VALVE PUSHBUTTON.

- A- INSTALL SLEEVE WITH FLANGE (2) ON CHASE SIDE OF WALL.
- B- SIDE NOTCHES (3) INDICATE INTEGRAL SEAT HEIGHT LOCATED 15" ABOVE FINISHED FLOOR ON CELL SIDE.
- C- VERTICAL OR TOP AND BOTTOM (4) NOTCHES INDICATE VERTICAL CENTERLINE OF SLEEVE OR TOILET FIXTURE.
- D- USE BLOCK OUT DIMENSIONS (5) SHOWN WHEN SLEEVES ARE NOT AVAILABLE.



ACORN ENGINEERING COMPANY
P.O. BOX 3527 Industry, CA 91744
15125 Proctor Ave Industry, CA 91746
(626) 336-4561 FAX (626) 961-2200

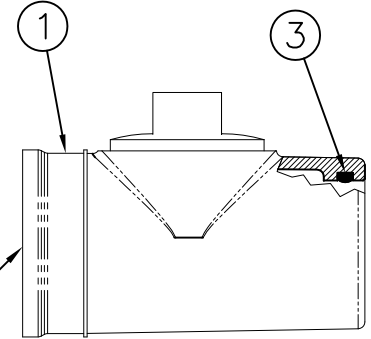
TITLE -SW WALL SLEEVE - CAT. #1696		
MANUFACTURE DATE APRIL 2003 TO PRESENT	DATE ISSUED 04/25/03	DRAWING NUMBER 9925-239-002
	DATE REVISED 04/05/13	



Optional -FVT Flush Valve Thru Wall Connection. Shown For Reference.

Optional -CO1 Waste Fitting. Shown For Reference.

REFERENCE DRAWING	
WASTE CONNECTION WITH CLEANOUT -CO1	9985-125-002

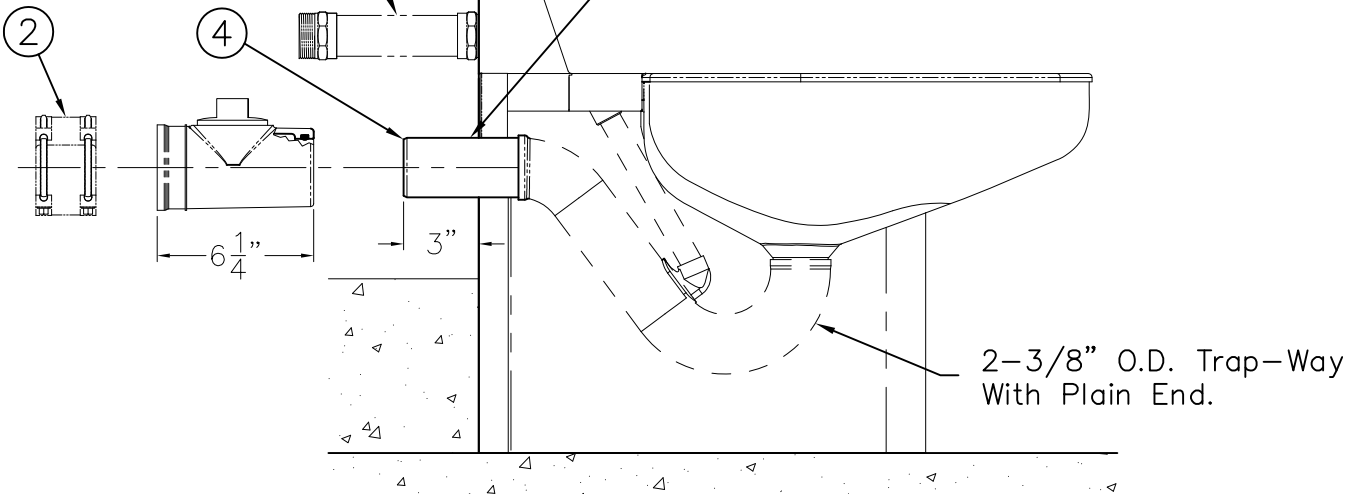


NOTE: Optional -CO1 Waste Fitting Available With 3" or 4" No-Hub

Scaled: X 2

Optional -FVT Flush Valve Thru Wall Connection Shown For Reference

Plain End Extends 3" Beyond Back Of Fixture. Optional Extended Waste Is Available -TWE



MODEL #1685 SHOWN FOR REFERENCE

INSTALLATION INSTRUCTIONS

A-INSERT O-RING ③ INTO GROOVE OF WASTE FITTING ①. LUBRICATE THE O-RING ③ WITH O-RING LUBRICANT.

B-INSTALL WASTE FITTING ① TO FIXTURE P-TRAP WASTE EXTENSION ④. ENGAGEMENT IS APPROXIMATELY 1-1/4". NOTE: TOILET WASTE

EXTENSION ④ IS 3" BEYOND BACK OF FIXTURE. LONGER WASTE EXTENSION IS AVAILABLE.

C-MAKE UP WASTE FITTING CONNECTION TO WASTE PIPING USING NO-HUB (BAND) CONNECTOR ② BY OTHERS.

ACORN ENGINEERING COMPANY
P.O. BOX 3527 INDUSTRY, CA. 91744
(626) 336-4561 FAX (626) 961-2200

TITLE **NO-HUB WASTE CONNECTION WITH CLEANOUT -CO1**

MANUFACTURE DATE

JULY 1975
PRESENT

DATE ISSUED

1/29/96

DATE REVISED

11/08/13 D

DRAWING NUMBER

9925-054-001