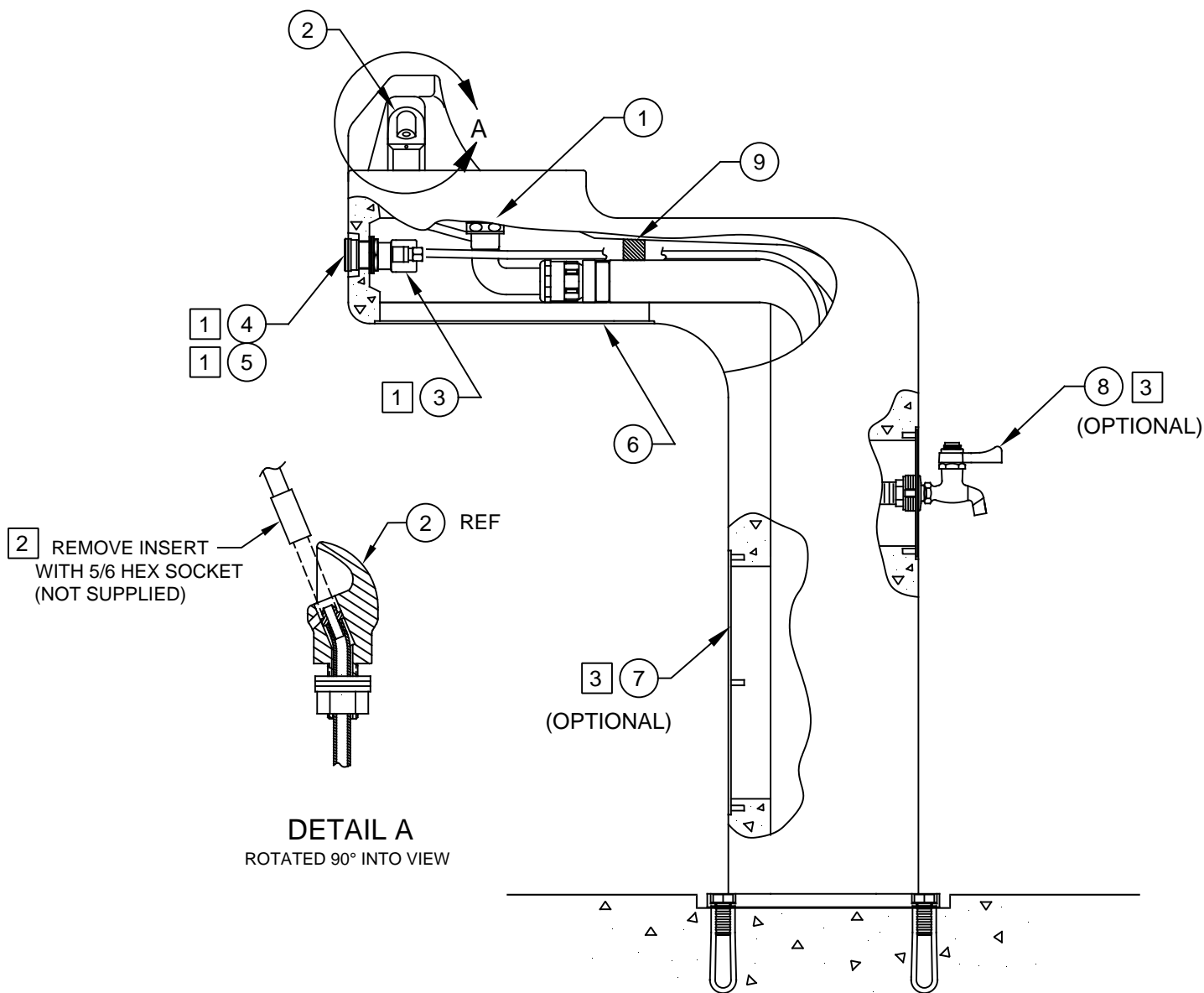


NOTES:

- 1 5874PB (ITEM 3) INCLUDES VRK5874 CARTRIDGE ASSEMBLY (ITEM 4) AND PBA7 RECESSED PUSH BUTTON (ITEM 5).
- 2 ENSURE TUBE IS DISCONNECTED FROM PUSH BUTTON VALVE BODY PRIOR TO REMOVAL. APPLY ONE DROP OF LOCTITE 222MS TO NOZZLE THREADS. PRIOR TO FASTENING BACK ONTO BUBBLER HEAD. RE-ATTACH TUBE TO VALVE.
- 3 USE MODEL 6250LF WITH ACCESS PLATE, PN 0004499489.


ITEM	DESCRIPTION	3177
1	STRAINER ASSY	6466
2	BUBBLER HEAD	5703M
3	BUTTON, PUSH, RECESSED, W/ VALVE	5874PB
4	VALVE REPAIR KIT	VRK5874
5	BUTTON, PUSH, ASSY, F/ 5874	PBA7
6	BOTTOM PLATE	PBM3177
7	ACCESS PLATE, W/ HOLE	0004499489
8	BIB FAUCET, SELF CLOSING	6250LF
9	SPACER, NEOPRENE, 1 X 3/4 X 2 LG	0005365345

* DENOTES OPTIONAL PART.



PARTS BREAKDOWN

WHEN ORDERING PARTS PLEASE SPECIFY MODEL NUMBER.

		1455 KLEPPE LANE SPARKS, NEVADA 89431 (775) 359-4712 FAX (775) 359-7424 E-MAIL: HAWS@HAWS.CO.COM WEBSITE: WWW.HAWS.CO.COM	
		ECN NO. REVISED PER BY ECN: 5187 VWC	MODEL(S) 3177
DRAWN D.	DATE 11/25/95	CHKD VWC	REVISION 15
APPROVED FV	DATE 07/06/17	SCALE: 1:8	DRAWING TYPE: PARTS BREAKDOWN SIZE: A SHEET 1 OF 1