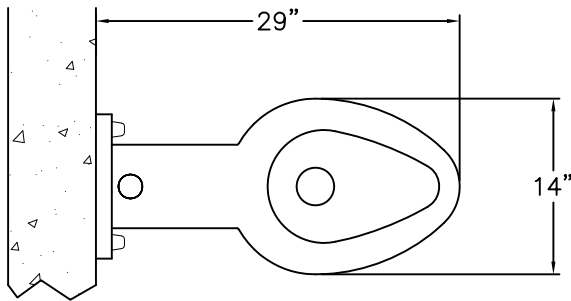


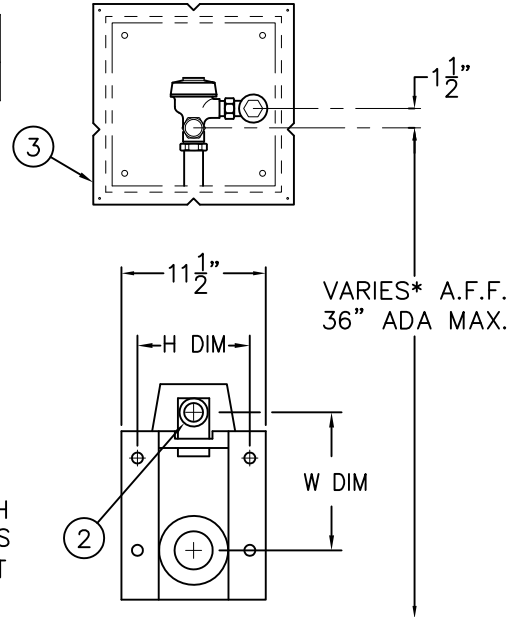


**NOTE:** USE MOUNTING HARDWARE FROM ORIGINAL UNIT TO MOUNT THE REPLACEWARE UNIT.

REFERENCE DRAWINGS	
2898 INSTALLATION	9908-399-001



**TOP VIEW**

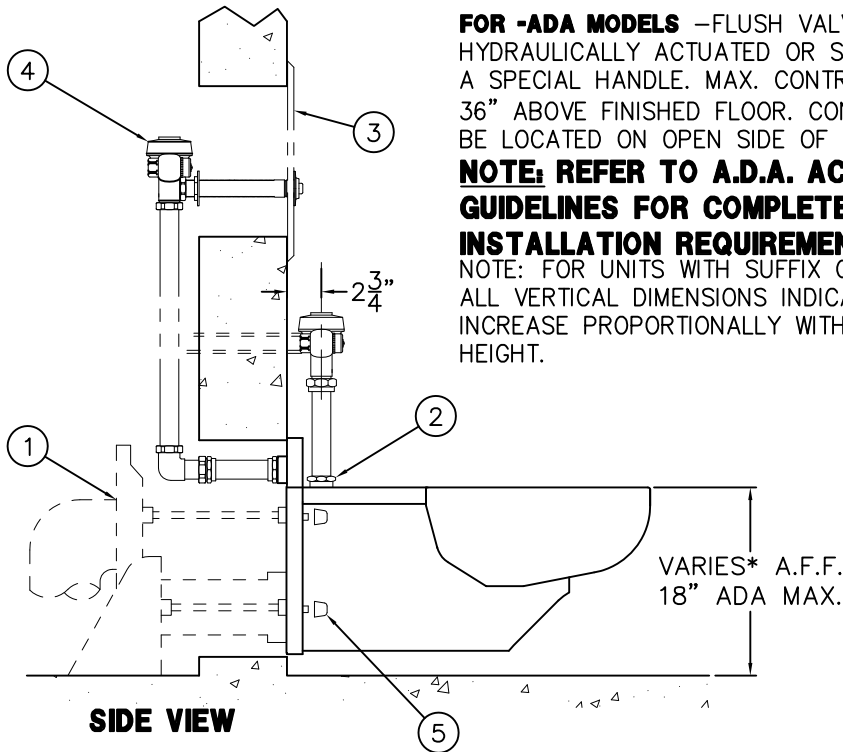


**(-W) WALL SUPPLY**

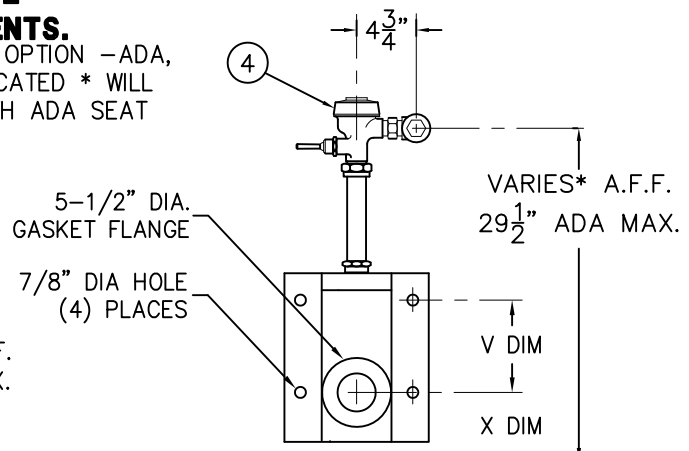
**FOR -ADA MODELS** -FLUSH VALVE MUST BE HYDRAULICALLY ACTUATED OR SUPPLIED WITH A SPECIAL HANDLE. MAX. CONTROL HEIGHT IS 36" ABOVE FINISHED FLOOR. CONTROLS MUST BE LOCATED ON OPEN SIDE OF TOILET.

**NOTE: REFER TO A.D.A. ACCESSIBILITY GUIDELINES FOR COMPLETE INSTALLATION REQUIREMENTS.**

NOTE: FOR UNITS WITH SUFFIX OPTION -ADA, ALL VERTICAL DIMENSIONS INDICATED \* WILL INCREASE PROPORTIONALLY WITH ADA SEAT HEIGHT.



**SIDE VIEW**



**(-T) TOP SUPPLY**

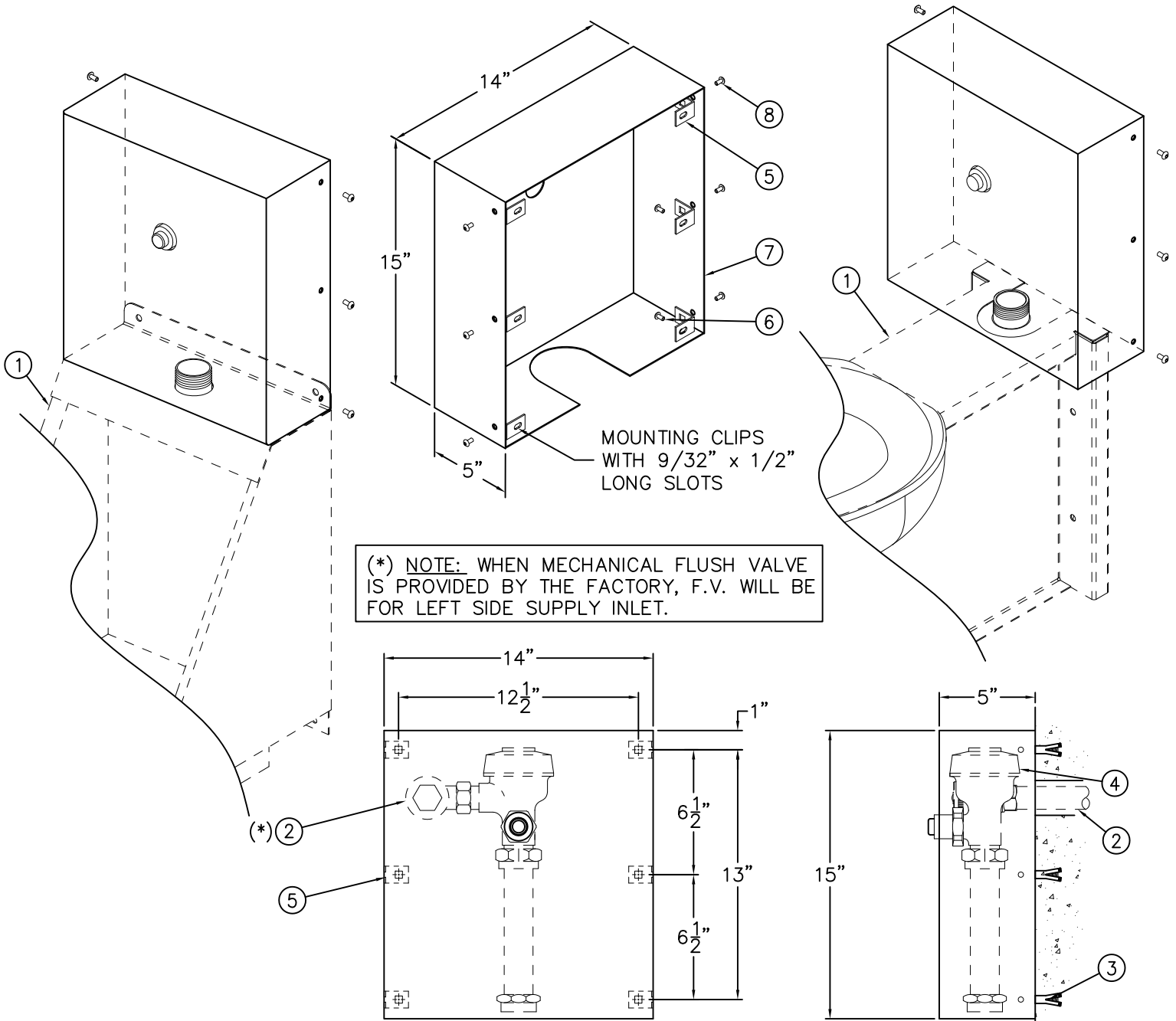
**INSTALLATION INSTRUCTIONS:**

- A- WASTE FITTINGS (1) BY OTHERS. THESE FITTINGS ARE NORMALLY FURNISHED COMPLETE WITH WASTE CONNECTION, SUPPORTING STUDS AND CAP NUTS (5). CONTACT THE SELECTED MANUFACTURER FOR DETAILS.
- B- ROUGH-IN FOR FLUSHING INLET 1-1/2" NPT (2).
- C- FOR DURA-WARE FLUSH VALVE ACCESS PANELS (3), FOR CONCEALED FLUSH VALVE INSTALLATION REFER TO DRAWING #9908-399-001.
- D- MOUNT FIXTURE TO THE WALL CARRIER. PLACE ON 5/8" STUDS (BY OTHERS) AND ATTACH WITH CAP NUTS (OPTIONAL) (5).
- E- CONNECT FLUSH VALVE (4) PER MANUFACTURERS' RECOMMENDATIONS.

**NOTE:**

FOR UNITS WITH -W WALL SUPPLY FLUSH VALVE, ACCESS FOR CONNECTING AND SERVICING FLUSH VALVE IS REQUIRED.

<p>ACORN ENGINEERING COMPANY P.O. BOX 3527 Industry, CA 91744 15125 Proctor Ave Industry, CA 91746 (626) 336-4561 FAX (626) 961-2200</p>	<p>TITLE <b>SIPHON JET TOILET -OFF FLOOR FRONT MOUNT (CAT. #3333)</b></p>		
	<p>MANUFACTURE DATE</p> <p><b>FEBRUARY 1975</b></p> <p><b>TO PRESENT</b></p>	<p>DATE ISSUED</p> <p><b>07/27/94</b></p> <p>DATE REVISED</p> <p><b>04/12/13</b></p>	<p>DRAWING NUMBER</p> <p><b>9925-739-001</b></p>



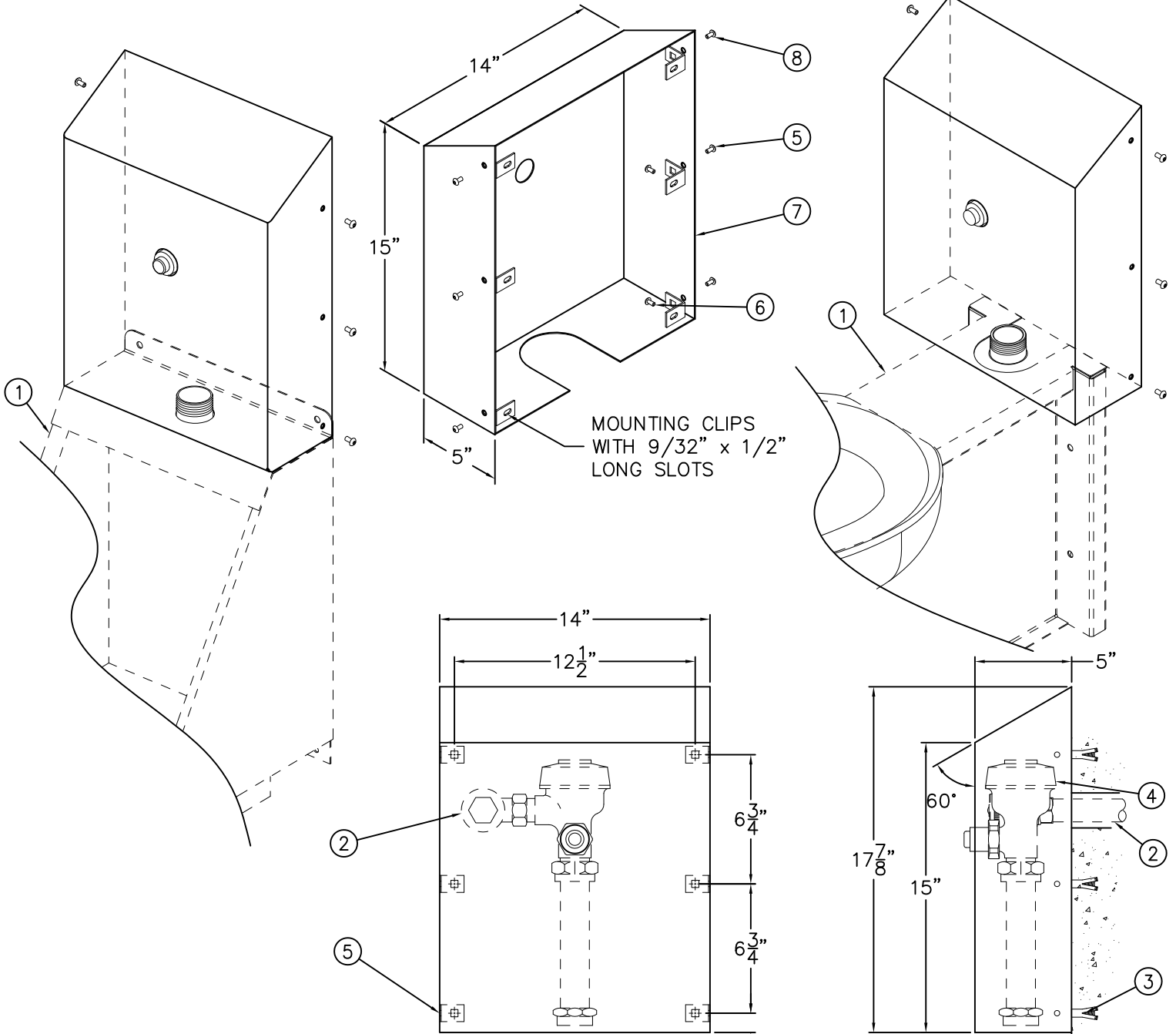
**INSTALLATION INSTRUCTIONS:**

- A- MOUNT FIXTURE ① TO WALL.
- B- ROUGH-IN FOR FLUSH VALVE SUPPLY ② REFER TO FIXTURE INSTALLATION INSTRUCTIONS.
- C- LOCATE AND INSTALL WALL ANCHORS (BY OTHERS) ③.
- D- INSTALL FLUSH VALVE ④ TO FIXTURE ①.
- E- ATTACH MOUNTING CLIPS ⑤ TO WALL USING MOUNTING SCREWS ⑥ (BY OTHERS).
- F- ATTACH FLUSH VALVE COVER ⑦ TO MOUNTING CLIPS ⑤ USING #10-32 SCREWS ⑧ PROVIDED.

Reference Drawings	
Security Screws	9951-005-001
Tinnerman Nuts	9951-007-001

**NOTE: FIXTURES SHOWN FOR REFERENCE ONLY.**

<p>ACORN ENGINEERING COMPANY P.O. BOX 3527 Industry, CA 91744 15125 Proctor Ave Industry, CA 91746 (626) 336-4561 FAX (626) 961-2200</p>	<p>TITLE <b>-FVC FLUSH VALVE COVER #2802</b></p>	
	<p>MANUFACTURE DATE</p> <p><b>FEBRUARY 1975</b></p> <p><b>TO PRESENT</b></p>	<p>DATE ISSUED</p> <p><b>04/17/98</b></p> <p>DATE REVISED</p> <p><b>12/21/16 D</b></p>



**INSTALLATION INSTRUCTIONS:**

- A- MOUNT FIXTURE ① TO WALL.
- B- ROUGH-IN FOR FLUSH VALVE SUPPLY ② REFER TO FIXTURE INSTALLATION INSTRUCTIONS.
- C- LOCATE AND INSTALL WALL ANCHORS (BY OTHERS) ③.
- D- INSTALL FLUSH VALVE ④ TO FIXTURE ①.
- E- ATTACH MOUNTING CLIPS ⑤ TO WALL USING MOUNTING SCREWS ⑥ (BY OTHERS).
- F- ATTACH FLUSH VALVE COVER ⑦ TO MOUNTING CLIPS ⑤ USING #10-32 SCREWS ⑧ PROVIDED.

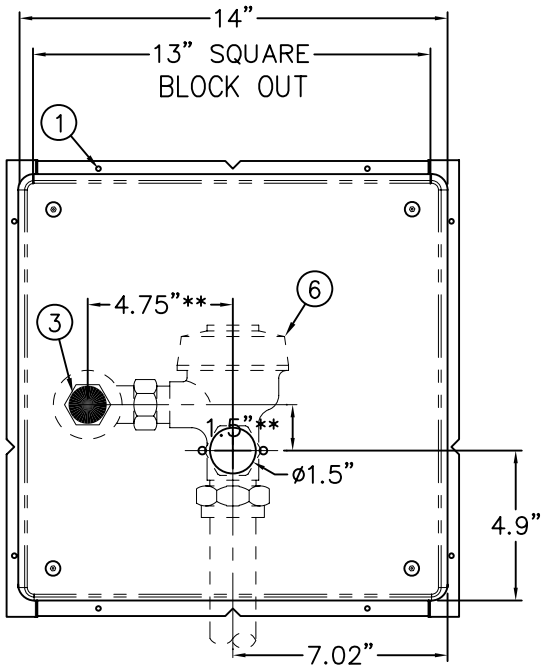
**Front View of -FVC-SLPT**

**Side View of -FVC-SLPT**

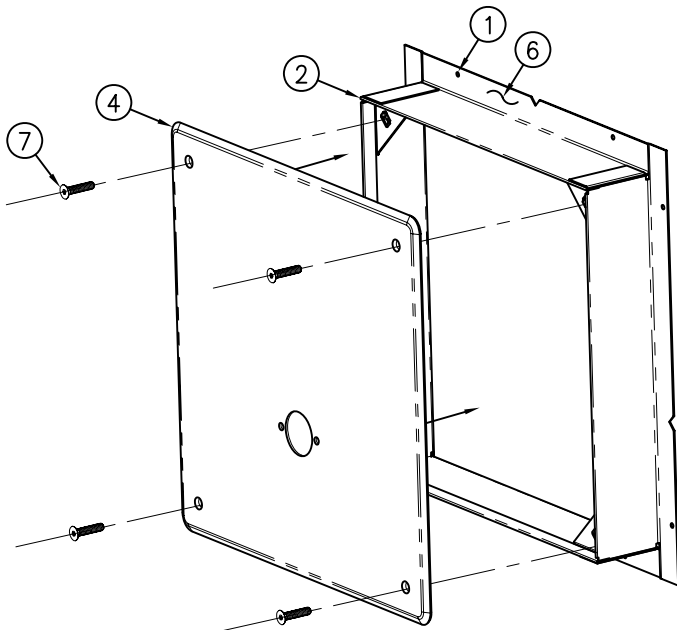
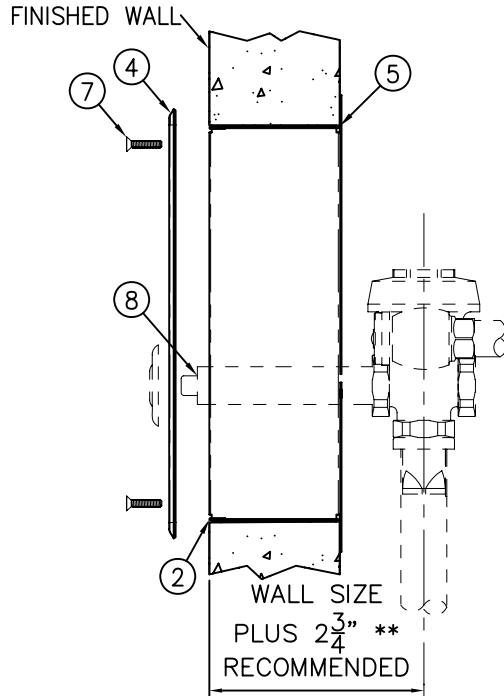
Reference Drawings	
Security Screws	9951-005-001
Tinnerman Nuts	9951-007-001

NOTE: FIXTURES SHOWN FOR REFERENCE ONLY.

<p>ACORN ENGINEERING COMPANY P.O. BOX 3527 Industry, CA 91744 15125 Proctor Ave Industry, CA 91746 (626) 336-4561 FAX (626) 961-2200</p>	<p>TITLE <b>-FVC-SLPT FLUSH VALVE COVER WITH SLOPING TOP #2802</b></p>		
	<p>MANUFACTURE DATE <b>FEBRUARY 1975 TO PRESENT</b></p>	<p>DATE ISSUED <b>03/07/11</b></p> <p>DATE REVISED <b>04/15/13 E</b></p>	<p>DRAWING NUMBER <b>9908-397-001</b></p>



**2898 LESS ESCUTCHEON**



**ROUGH-IN:**

SLEEVES ARE INSTALLED IN FORMS (USING NAIL HOLES (1) PROVIDED) OR GROUTED INTO BLOCK WALLS, BECOMING A PERMANENT PART OF THE WALL. FRONT EDGE OF FRAME (2) SHOULD BE FLUSH WITH FINISHED WALL.

A-FLUSH VALVE INLET 1" NPT (3) TO DIMENSIONS SHOWN.

**INSTALLATION INSTRUCTIONS:**

- B-REMOVE STAINLESS STEEL PANEL (4).
- C-INSTALL SLEEVE FRAME WITH (5) FLANGE ON PIPE CHASE SIDE OF WALL.
- D-INSTALL FLUSH VALVE (6) PER MANUFACTURES INSTALLATION SHEETS.
- E- ATTACH (4) PANEL TO (2) FRAME WITH (4) 1/4"-20 x 1" (7) TAMPER-RESISTANT STAINLESS STEEL SCREWS PROVIDED. REFERENCE DRAWING NO. 9951-005-001
- F- COMPLETE INSTALLATION USING APPROPRIATE (8) PUSHBUTTON ASSEMBLY PER MANUFACTURERS INSTALLATION PROCEDURES.

**\*\* NOTE:**

FLUSH VALVE BY OTHERS SHOWN FOR REFERENCE ONLY. COMPLETE WITH INSTALLER PROVIDED FLUSH VALVE AND APPROPRIATE PUSHBUTTON ASSEMBLY AS REQUIRED FOLLOWING RECOMMENDED MANUFACTURERS INSTALLATION PROCEDURES.

**ACORN ENGINEERING COMPANY**  
 P.O. BOX 3527 INDUSTRY, CA. 91744  
 (626) 336-4561 FAX (626) 961-2200

TITLE **FLUSH VALVE ACCESS PANEL MODEL 2898**

MANUFACTURE DATE  
**JANUARY 1973**  
**TO PRESENT**

DATE ISSUED  
**06/01/90**  
 DATE REVISED  
**10/28/10**

DRAWING NUMBER  
**9908-399-001**