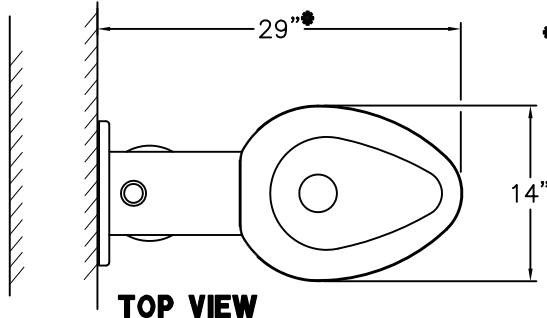




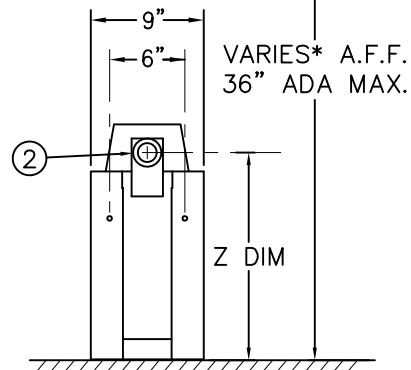
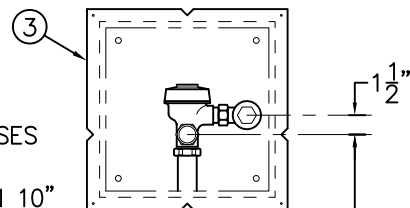
NOTE:

USE MOUNTING HARDWARE FROM ORIGINAL UNIT TO MOUNT THE REPLACEWARE UNIT.

REFERENCE DRAWINGS	
2898 INSTALLATION	9908-399-001



* OVERALL LENGTH INCREASES ACCORDINGLY WHEN "Y" DIMENSION IS MORE THAN 10"

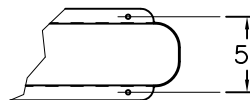
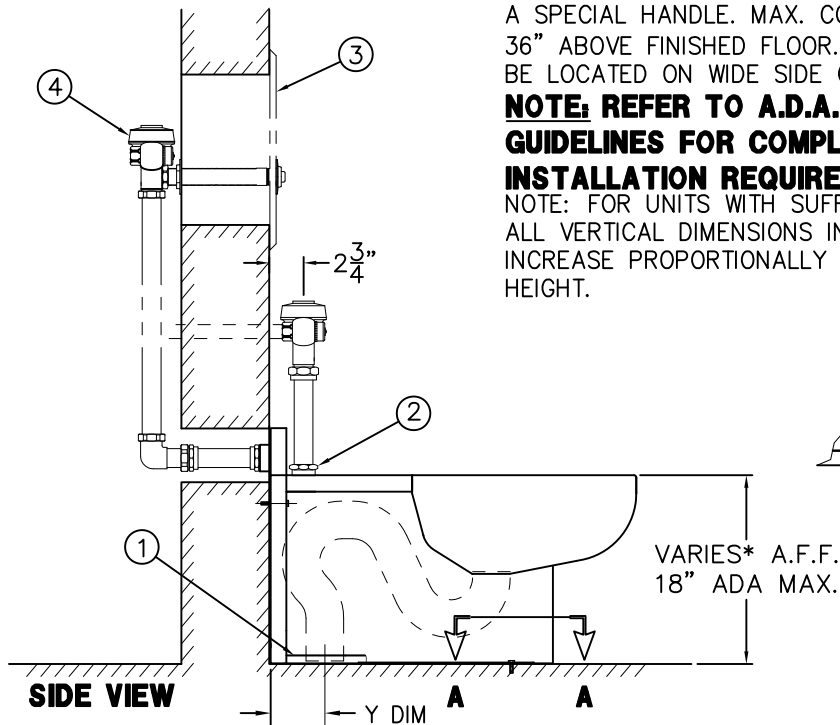


(-W) WALL SUPPLY

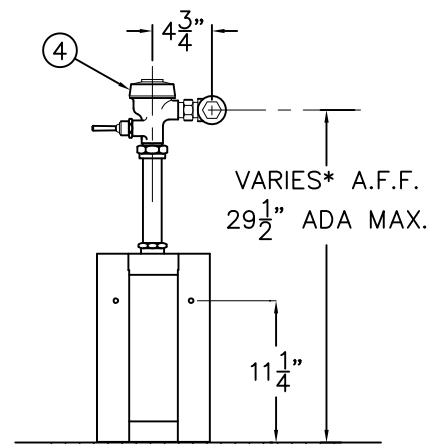
FOR -ADA MODELS -FLUSH VALVE MUST BE HYDRAULICALLY ACTUATED OR SUPPLIED WITH A SPECIAL HANDLE. MAX. CONTROL HEIGHT IS 36" ABOVE FINISHED FLOOR. CONTROLS MUST BE LOCATED ON WIDE SIDE OF TOILET.

NOTE: REFER TO A.D.A. ACCESSIBILITY GUIDELINES FOR COMPLETE INSTALLATION REQUIREMENTS.

NOTE: FOR UNITS WITH SUFFIX OPTION -ADA, ALL VERTICAL DIMENSIONS INDICATED * WILL INCREASE PROPORTIONALLY WITH ADA SEAT HEIGHT.



DETAIL 'A'



(-T) TOP SUPPLY

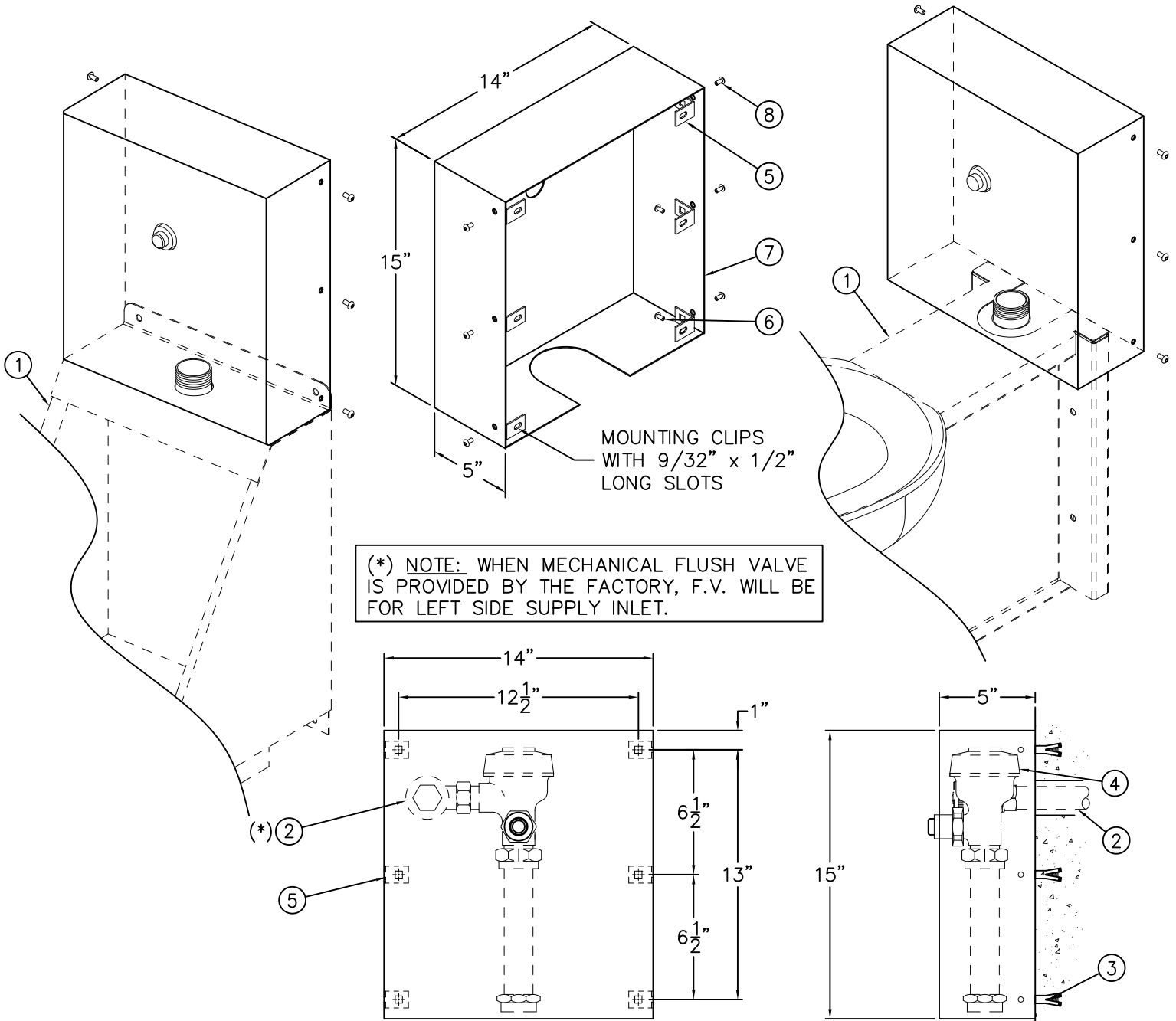
INSTALLATION INSTRUCTIONS:

- A- ROUGH-IN FOR THE FOLLOWING:
 - 7-1/2" GASKET WASTE ① .
 - 1-1/2" NPT FLUSHING INLET CONNECTION ② .
- B- ROUGH-IN FOR FLUSHING INLET 1-1/2" NPT ②.
- C- FOR DURA-WARE FLUSH VALVE ACCESS PANELS ③, FOR CONCEALED FLUSH VALVE INSTALLATION REFER TO DRAWING #9908-399-001.
- D- MOUNT FIXTURE TO THE WALL AND FLOOR. ATTACH WITH FASTENERS (BY OTHERS).
- E- SUFFIX -FV OPTIONAL FLUSH VALVE. CONNECT FLUSH VALVE ④ PER MANUFACTURERS' RECOMMENDATIONS.

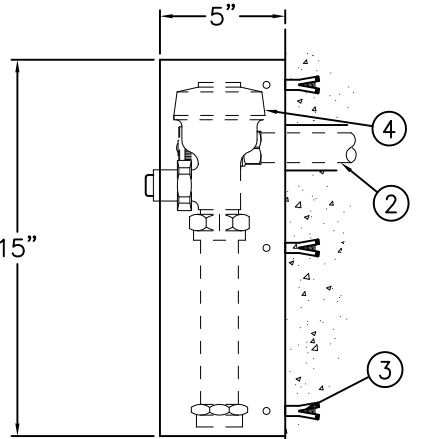
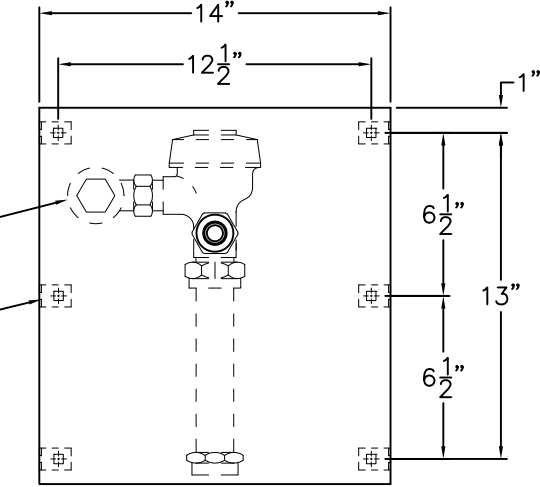
NOTE:

FOR UNITS WITH -W WALL SUPPLY FLUSH VALVE, ACCESS FOR CONNECTING AND SERVICING FLUSH VALVE IS REQUIRED.

<p>ACORN ENGINEERING COMPANY P.O. BOX 3527 Industry, CA 91744 15125 Proctor Ave Industry, CA 91746 (626) 336-4561 FAX (626) 961-2200</p>	<p>TITLE SIPHON JET TOILET -ON THE FLOOR FRONT MOUNT (CAT. #3337)</p>		
	<p>MANUFACTURE DATE</p> <p>MARCH 1999</p> <p>TO PRESENT</p>	<p>DATE ISSUED</p> <p>03/11/99</p>	<p>DRAWING NUMBER</p> <p>9925-734-001</p>
		<p>DATE REVISED</p> <p>04/15/13</p>	



(* NOTE: WHEN MECHANICAL FLUSH VALVE IS PROVIDED BY THE FACTORY, F.V. WILL BE FOR LEFT SIDE SUPPLY INLET.



INSTALLATION INSTRUCTIONS:

- A- MOUNT FIXTURE ① TO WALL.
- B- ROUGH-IN FOR FLUSH VALVE SUPPLY ② REFER TO FIXTURE INSTALLATION INSTRUCTIONS.
- C- LOCATE AND INSTALL WALL ANCHORS (BY OTHERS) ③.
- D- INSTALL FLUSH VALVE ④ TO FIXTURE ①.
- E- ATTACH MOUNTING CLIPS ⑤ TO WALL USING MOUNTING SCREWS ⑥ (BY OTHERS).
- F- ATTACH FLUSH VALVE COVER ⑦ TO MOUNTING CLIPS ⑤ USING #10-32 SCREWS ⑧ PROVIDED.

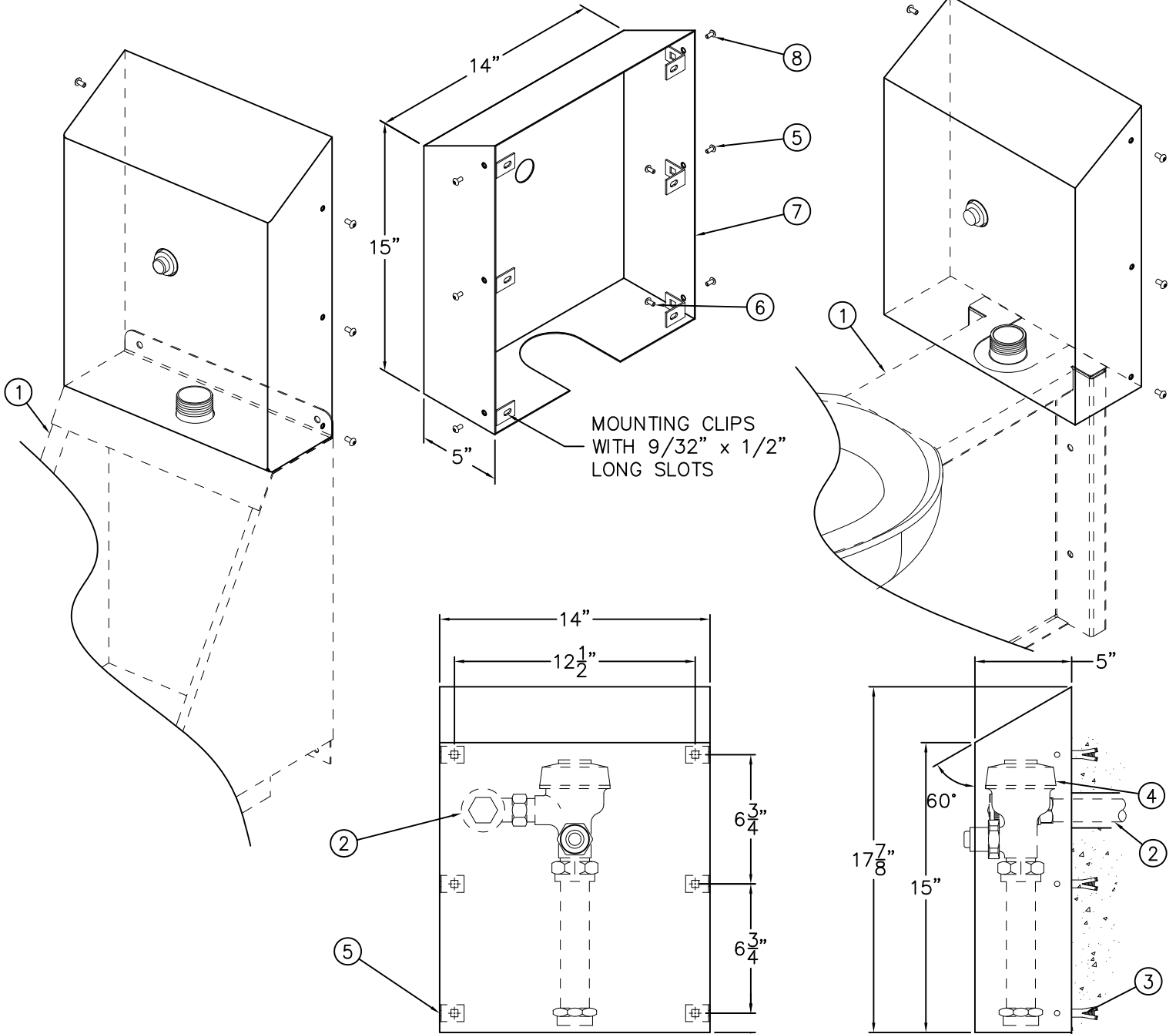
Front View of -FVC

Side View of -FVC

Reference Drawings	
Security Screws	9951-005-001
Tinnerman Nuts	9951-007-001

NOTE: FIXTURES SHOWN FOR REFERENCE ONLY.

<p>ACORN ENGINEERING COMPANY P.O. BOX 3527 Industry, CA 91744 15125 Proctor Ave Industry, CA 91746 (626) 336-4561 FAX (626) 961-2200</p>	<p>TITLE -FVC FLUSH VALVE COVER #2802</p>		
	<p>MANUFACTURE DATE</p> <p>FEBRUARY 1975</p> <p>TO PRESENT</p>	<p>DATE ISSUED</p> <p>04/17/98</p>	<p>DRAWING NUMBER</p> <p>9908-395-001</p>
		<p>DATE REVISED</p> <p>12/21/16 D</p>	



INSTALLATION INSTRUCTIONS:

- A- MOUNT FIXTURE ① TO WALL.
- B- ROUGH-IN FOR FLUSH VALVE SUPPLY ② REFER TO FIXTURE INSTALLATION INSTRUCTIONS.
- C- LOCATE AND INSTALL WALL ANCHORS (BY OTHERS) ③.
- D- INSTALL FLUSH VALVE ④ TO FIXTURE ①.
- E- ATTACH MOUNTING CLIPS ⑤ TO WALL USING MOUNTING SCREWS ⑥ (BY OTHERS).
- F- ATTACH FLUSH VALVE COVER ⑦ TO MOUNTING CLIPS ⑤ USING #10-32 SCREWS ⑧ PROVIDED.

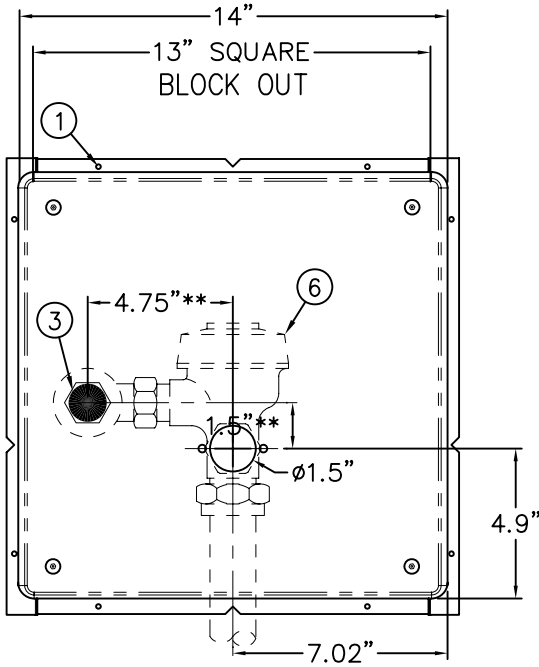
Front View of -FVC-SLPT

Side View of -FVC-SLPT

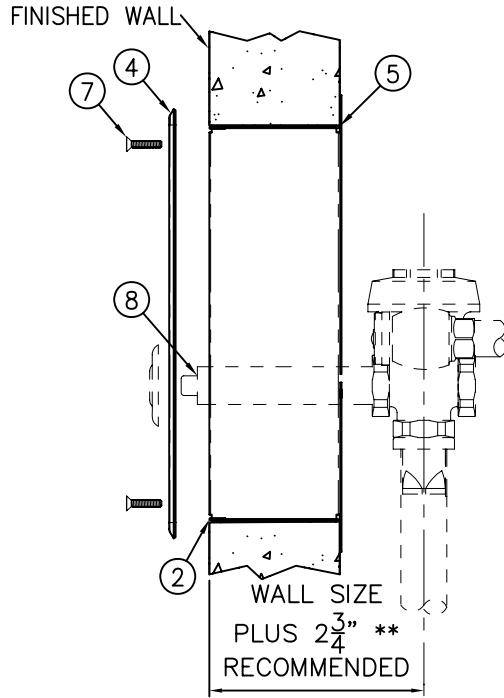
Reference Drawings	
Security Screws	9951-005-001
Tinnerman Nuts	9951-007-001

NOTE: FIXTURES SHOWN FOR REFERENCE ONLY.

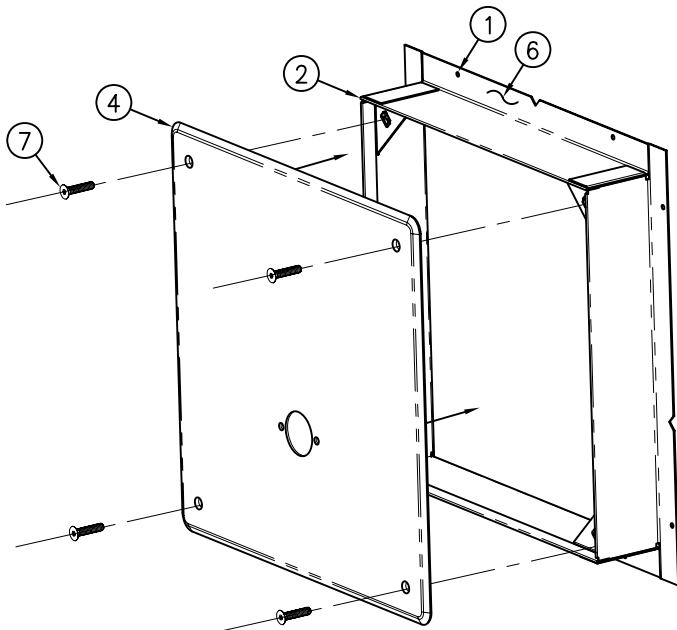
<p>ACORN ENGINEERING COMPANY P.O. BOX 3527 Industry, CA 91744 15125 Proctor Ave Industry, CA 91746 (626) 336-4561 FAX (626) 961-2200</p>	<p>TITLE -FVC-SLPT FLUSH VALVE COVER WITH SLOPING TOP #2802</p>		
	<p>MANUFACTURE DATE</p> <p>FEBRUARY 1975</p> <p>TO PRESENT</p>	<p>DATE ISSUED</p> <p>03/07/11</p>	<p>DRAWING NUMBER</p> <p>9908-397-001</p>
		<p>DATE REVISED</p> <p>04/15/13 E</p>	



2898 LESS ESCUTCHEON



WALL SIZE
PLUS 2 3/4" **
RECOMMENDED



ROUGH-IN:

SLEEVES ARE INSTALLED IN FORMS (USING NAIL HOLES (1) PROVIDED) OR GROUTED INTO BLOCK WALLS, BECOMING A PERMANENT PART OF THE WALL. FRONT EDGE OF FRAME (2) SHOULD BE FLUSH WITH FINISHED WALL.

A-FLUSH VALVE INLET 1" NPT (3) TO DIMENSIONS SHOWN.

INSTALLATION INSTRUCTIONS:

- B-REMOVE STAINLESS STEEL PANEL (4).
- C-INSTALL SLEEVE FRAME WITH (5) FLANGE ON PIPE CHASE SIDE OF WALL.
- D-INSTALL FLUSH VALVE (6) PER MANUFACTURES INSTALLATION SHEETS.
- E- ATTACH (4) PANEL TO (2) FRAME WITH (4) 1/4"-20 x 1" (7) TAMPER-RESISTANT STAINLESS STEEL SCREWS PROVIDED. REFERENCE DRAWING NO. 9951-005-001
- F- COMPLETE INSTALLATION USING APPROPRIATE (8) PUSHBUTTON ASSEMBLY PER MANUFACTURERS INSTALLATION PROCEDURES.

**** NOTE:**

FLUSH VALVE BY OTHERS SHOWN FOR REFERENCE ONLY. COMPLETE WITH INSTALLER PROVIDED FLUSH VALVE AND APPROPRIATE PUSHBUTTON ASSEMBLY AS REQUIRED FOLLOWING RECOMMENDED MANUFACTURERS INSTALLATION PROCEDURES.

ACORN ENGINEERING COMPANY
P.O. BOX 3527 INDUSTRY, CA. 91744
(626) 336-4561 FAX (626) 961-2200

TITLE **FLUSH VALVE ACCESS PANEL MODEL 2898**

MANUFACTURE DATE
JANUARY 1973
TO PRESENT

DATE ISSUED
06/01/90
DATE REVISED
10/28/10

DRAWING NUMBER
9908-399-001