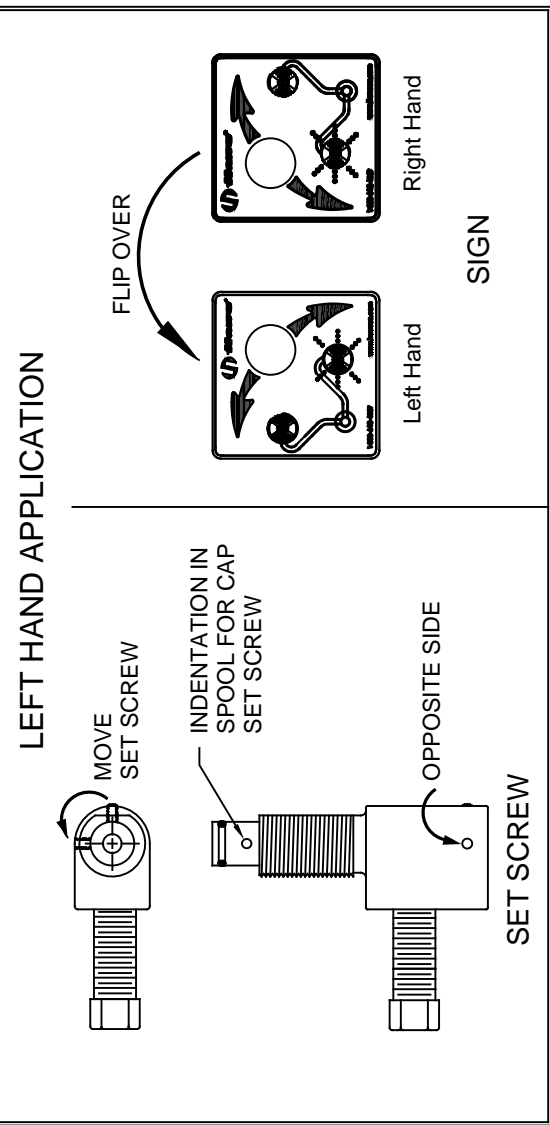
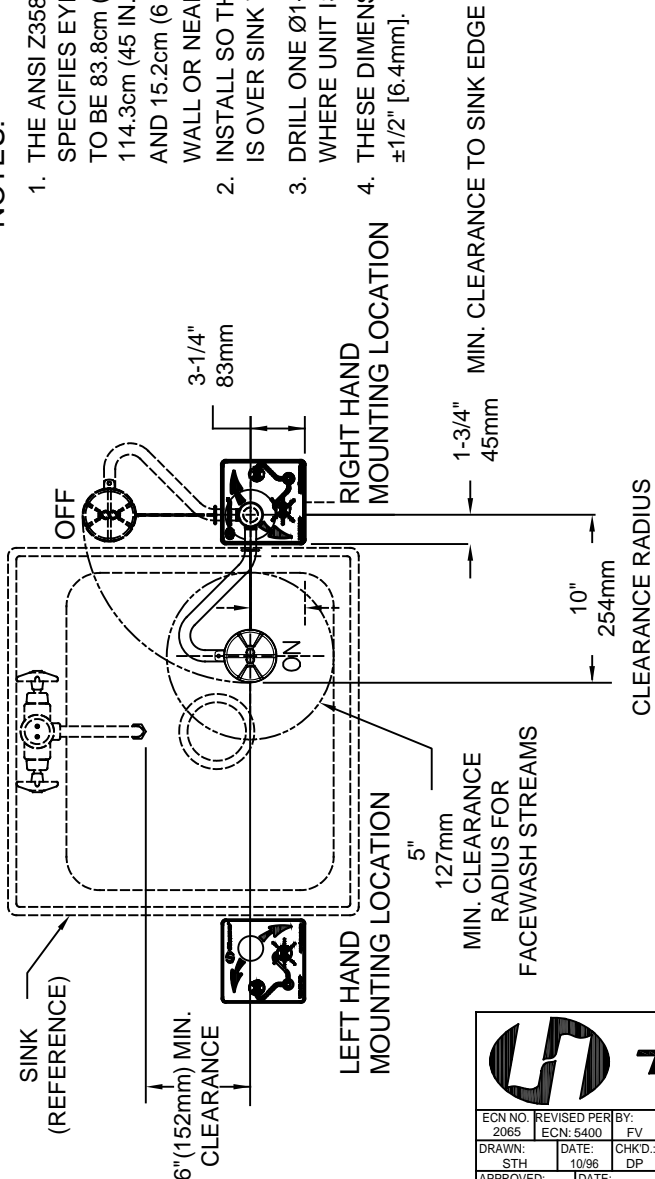



NOTES:

1. THE ANSI Z358.1-2009 STANDARD SPECIFIES EYEWASH NOZZLE HEIGHTS TO BE 83.8cm (33 IN.) TO 114.3cm (45 IN.) ABOVE THE FLOOR AND 15.2cm (6 IN.) MINIMUM FROM WALL OR NEAREST OBSTRUCTION.
2. INSTALL SO THAT EYEWASH HEAD IS OVER SINK WHEN ACTIVATED.
3. DRILL ONE Ø1-3/8" [35mm] HOLE WHERE UNIT IS TO BE INSTALLED.
4. THESE DIMENSIONS MAY VARY ±1/2" [6.4mm].

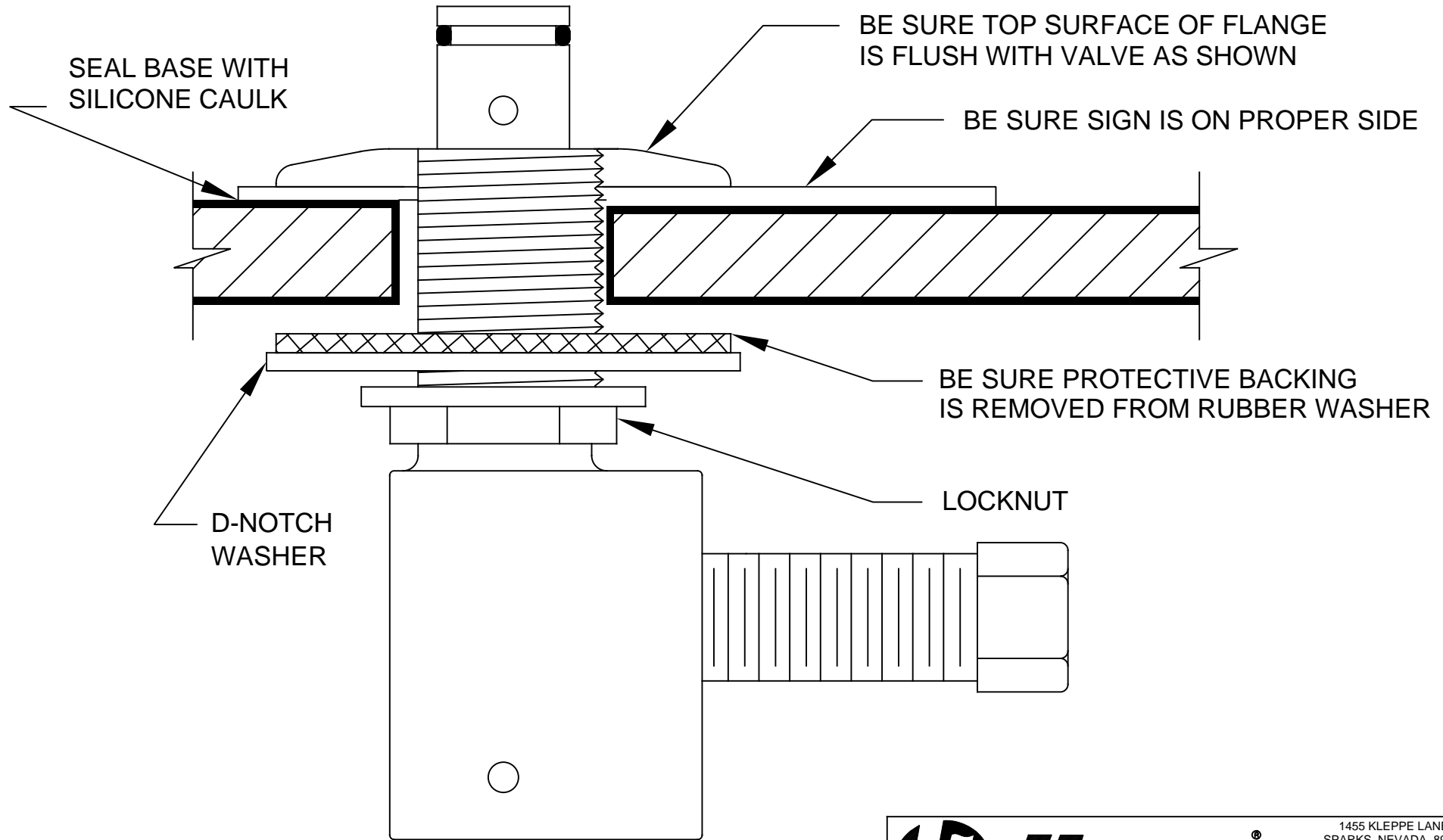





Haws

1455 KLEPPE LANE
SPARKS, NEVADA 89431
(775) 359-4712 FAX (775) 359-7424
E-MAIL: HAWS@HAWS.CO.COM
WEBSITE: WWW.HAWS.CO.COM

ECN NO. 2065		REVISED PER: FV		MODEL(S)		7611		PART NUMBER	
DRAWN: STH		DATE: 10/96		CHKD: DP				0002080063.D	
APPROVED: IR		DATE: 05/30/19		SCALE: 8:1		DRAWING TYPE: INSTALLATION		REVISION	
								11	
								SHEET 1 OF 2	



		Haws [®]		1455 KLEPPE LANE SPARKS, NEVADA 89431 (775) 359-4712 FAX (775) 359-7424 E-MAIL: HAWS@HAWS.CO.COM WEBSITE: WWW.HAWS.CO.COM	
				ECN NO. REVISED PER BY: MODEL(S) ECN: 5400 FV	PART NUMBER 0002080063.D
DRAWN: STH APPROVED: IR	DATE: 10/96 DATE: 05/30/19	CHKD: DP	7611	REVISION 11	SHEET 2 OF 2
SCALE: 1:1		DRAWING TYPE: INSTALLATION		SIZE: A	