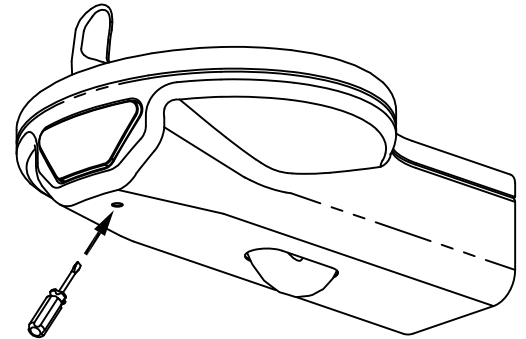
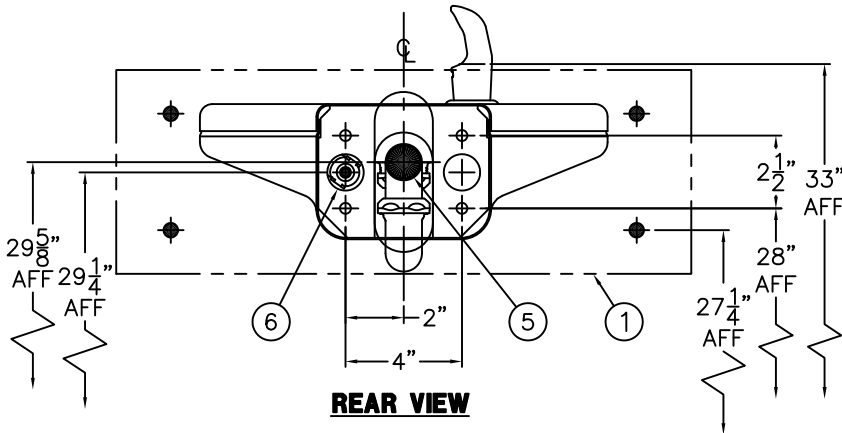
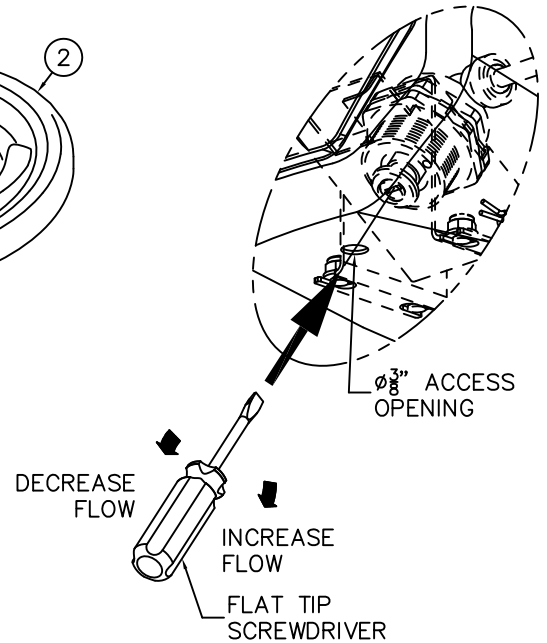
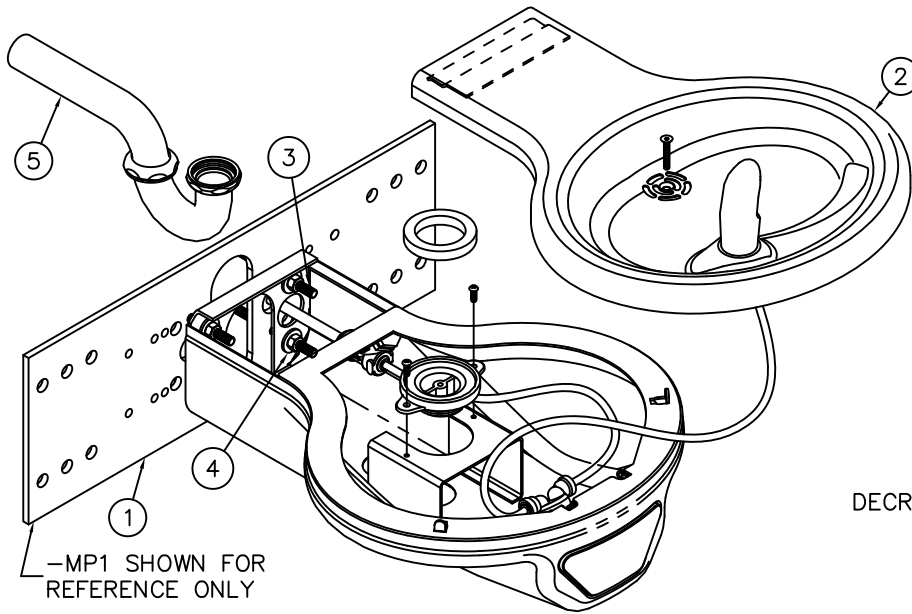




INSTALLATION INSTRUCTIONS

DRINKING FOUNTAINS



INSTALLATION INSTRUCTIONS:

REFER TO DRAWING #9938-375-001 TO INSTALL MOUNTING PLATE CORRECTLY.

- A-ROUGH-IN WASTE AND SUPPLY LINES DURING -MP1 ① INSTALLATION OR PRIOR TO MOUNTING FIXTURE.
- B-CAREFULLY REMOVE FIXTURE FROM PACKING MATERIAL AND COVER TO PREVENT SCRATCHING OR DAMAGE.
- C-SEPARATE BASIN ASSEMBLY ② FROM HOUSING AND INSPECT FIXTURE TO ENSURE ALL TUBING CONNECTIONS, BUBBLERS AND PUSHBUTTONS HAVE NOT BECOME LOOSE DURING SHIPPING. CORRECT IF NECESSARY.
- D-ALIGN FIXTURE MOUNTING POINTS WITH STUDS ③ AND SLIDE FIXTURE TO FINISHED WALL. FIX WITH NUTS AND WASHERS PROVIDED ④.

FLOW ADJUSTMENT DETAIL

- E-MAKE UP CONNECTIONS TO 1-1/4" OD WASTE TRAP ASSEMBLY ⑤ PROVIDED.
- F-FLUSH SUPPLY LINES THOROUGHLY BEFORE CONNECTING SUPPLY INLETS ⑥.
- G-TEST OPERATION OF BUBBLERS BY DEPRESSING BUTTONS AND ADJUST THE FLOW RATE AS REQUIRED. SEE DETAIL A. CHECK ALL CONNECTIONS AND WASTE PIPING FOR LEAKS. CORRECT IF PRESENT.
- H-INSTALL BASIN ASSEMBLY ② TO COMPLETE THE INSTALLATION.

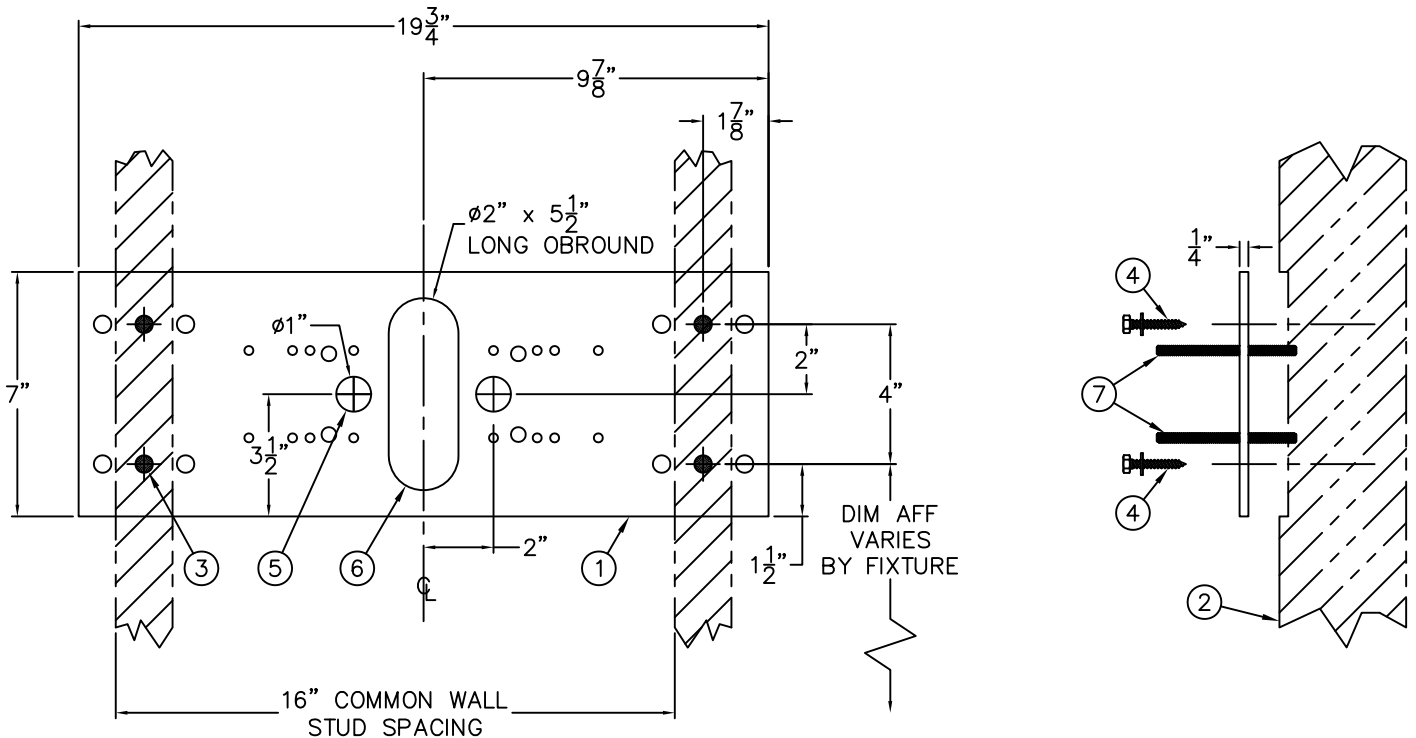
<p>MURDOCK-SUPER SECUR P.O. Box 3527 Industry, CA 91744 15125 Proctor Ave Industry, CA 91746 Phone: (800) 591-9880 www.murdock-supersec.com</p>	<p>TITLE CONTOURED WALL MOUNTED 18" LONG DRINKING FOUNTAIN</p>	
	<p>MANUFACTURE DATE JANUARY 2006 TO PRESENT</p>	<p>DATE ISSUED 09/22/05</p> <p>DATE REVISED 03/01/16</p>



INSTALLATION INSTRUCTIONS

DRINKING FOUNTAIN

ROUGH-IN FOR 3/8" OD PUSH-IN SUPPLY INLET, STRAIGHT STOP RECOMMENDED. *1/4" NCT x 2" LONG TUBE STUB OUT PROVIDED.
ROUGH-IN FOR 1-1/4" OD P-TRAP WASTE OUTLET.

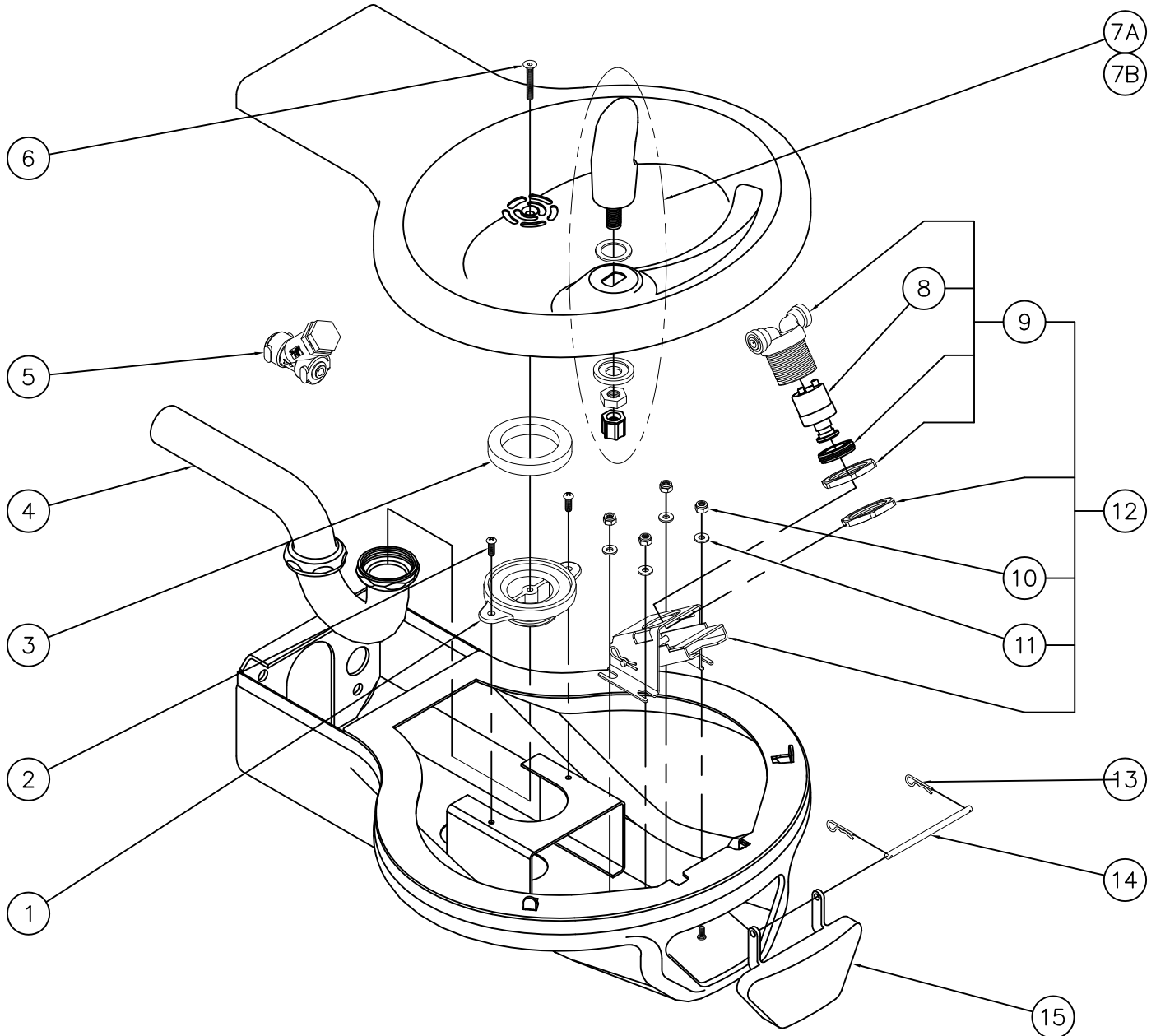


INSTALLATION INSTRUCTIONS:


- A-PLATE ① INTENDED TO BE RECESSED FLUSH WITH SUPPORT FRAMING ② PROVIDED BY INSTALLER. FRAME & BLOCK OUT SUPPORT USING DIMENSIONS SHOWN. FRAME SHOULD SUPPORT 300 LBS MINIMUM.
- B-MOUNTING PLATE ① IS 1/4" THICK AND INCLUDES 12, 1/2" DIAMETER PUNCHING FOR ANCHORING HARDWARE BY OTHERS.
- C-STRIKE A HORIZONTAL CHALK LINE TO LOCATE BOTTOM MOUNTING HOLES ③. REFERENCE DISCHARGE HEIGHT REQUIREMENTS FOR YOUR MODEL AND FACILITY TO DETERMINE CORRECT HEIGHT AT FINISHED FLOOR (AFF).

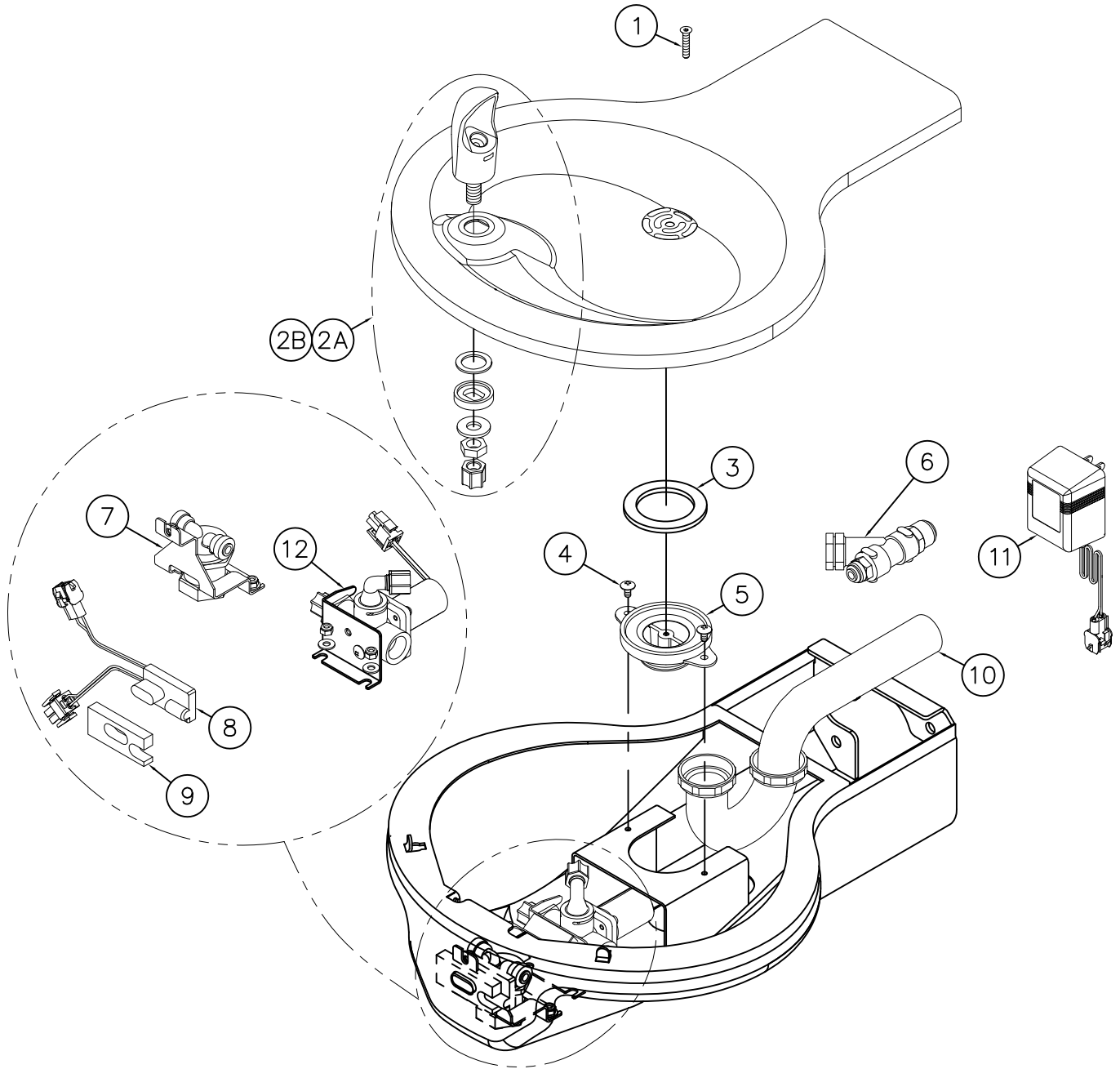
- D-AFTER POSITIONING PLATE CORRECTLY, FIX PLATE TO WALL USING APPROPRIATE, INSTALLER PROVIDED ANCHORING HARDWARE ④.
- E-MAKE UP APPROPRIATE SUPPLY ⑤ AND WASTE ⑥ ROUGHS THROUGH MOUNTING PLATE OPENINGS. A STRAIGHT SUPPLY STOP IS RECOMMENDED.
- F-REFER TO FIXTURE INSTALLATION SHEETS TO LOCATE 5/16" THREADED STUDS MOUNTING HARDWARE AND THREAD STUDS ⑦ THRU PLATE SO THAT A MINIMUM OF 1-1/4" OF THREAD PROJECTS BEYOND THE FINISHED WALL MATERIAL.
- G-PROTECT THREADED STUDS ⑦, SUPPLY ⑤ AND WASTE ⑥ ROUGHS WHILE FINISHING WALL.

<p>MURDOCK-SUPER SECUR P.O. Box 3527 Industry, CA 91744 15125 Proctor Ave Industry, CA 91746 Phone: (800) 591-9880 www.murdock-supersecur.com</p>	<p>TITLE -MP1 WALL MOUNTING PLATE</p>	
	<p>MANUFACTURE DATE JANUARY 2006 TO PRESENT</p>	<p>DATE ISSUED 09/28/05</p> <p>DATE REVISED 03/02/16</p>




1	7000-005-199	DRAIN ADAPTER	8	7000-060-000	VALVE CARTRIDGE
2	0116-016-000	PHILLIPS TRUSS HEAD SCREW	9	7000-050-001	VALVE ASSEMBLY
3	7000-006-000	FLAT DRAIN ADAPTER GASKET	10	0308-009-000	NYLON INSERT LOCKNUT
4	7000-015-000	1-1/4" OUTER DIAMETER P-TRAP	11	0331-004-000	FLAT WASHER
5	7000-021-001	"Y" STRAINER	12	7001-008-001	VALVE ACTIVATION ASSEMBLY
6	0152-010-000	CENTER REJECT FLAT HEAD SCREW	13	0341-100-000	WIRE CLIP
7A	7000-012-001	STAINLESS STEEL BUBBLER	14	7000-100-199	BLACK DELRIN SHAFT
7B	7000-099-002	FLEXIBLE BUBBLER ASSEMBLY	15	7000-004-000	PUSH PAD
ITEM	PART NUMBER	DESCRIPTION	ITEM	PART NUMBER	DESCRIPTION

 <p>MURDOCK-SUPER SECUR P.O. Box 3527 Industry, CA 91744 15125 Proctor Ave Industry, CA 91746 Phone: (800) 591-9880 www.murdock-supersecur.com</p>	TITLE PUSH PAD OPERATED CONTOURED DRINKING FOUNTAIN		
	MANUFACTURE DATE	DATE ISSUED	DRAWING NUMBER
	JANUARY 2006 TO PRESENT	09/22/05 03/01/16	9938-000-500



1	0152-010-000	CENTER REJECT FLAT HEAD SCREW	7	7000-067-001	SENSOR & FLOW ADJ BRACKET ASSY
2A	7000-012-001	STAINLESS STEEL BUBBLER	8	2562-373-001	9V DC SENSOR ASSEMBLY
2B	7000-099-002	FLEXIBLE GRAY BUBBLER ASSY	9	7001-202-199	SENSOR SPACER
3	7000-006-000	FLAT DRAIN ADAPTER GASKET	10	7000-015-000	1-1/4" OD P-TRAP
4	0116-016-000	PHILLIPS TRUSS HEAD SCREW	11	0711-410-001	9V DC PLUG-IN TRANSFORMER
5	7000-005-199	DRAIN ADAPTER	12	7001-200-001	SOLENOID VALVE ASSY w/ MTG BRKT
6	7000-021-001	"Y" STAINER			

ITEM	PART NUMBER	DESCRIPTION	ITEM	PART NUMBER	DESCRIPTION
 MURDOCK-SUPER SECUR P.O. Box 3527 Industry, CA 91744 15125 Proctor Ave Industry, CA 91746 Phone: (800) 591-9880 www.murdock-supersecur.com		TITLE SENSOR OPERATED CONTOURED DRINKING FOUNTAIN			
MANUFACTURE DATE AUGUST 2013 TO PRESENT			DATE ISSUED 08/09/13		DRAWING NUMBER 9938-000-501
			DATE REVISED 03/01/16		



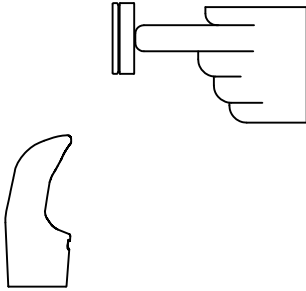
INSTALLATION INSTRUCTIONS

STANDARD PUSH PAD / PUSH BUTTON DRINKING FOUNTAIN

CONDITION:

SOLUTION:

NO WATER FLOW:



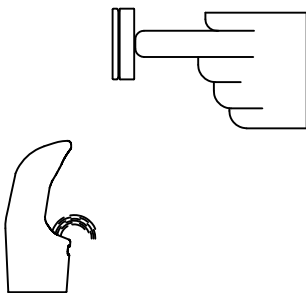
- 1.1 Check water main supply – open.
- 1.2 Inspect stop (by others) – open & no debris.
- 1.3 Inspect in–line strainer for debris – clean.
- 1.4 Replace valve cartridge.

WATER DRIPS / WILL NOT SHUT OFF:




- 2.1 For push pad activated drinking fountains only: Open fixture and move valve bracket assembly further back from push pad.
- 2.2 Replace valve cartridge.

REDUCED WATER FLOW:


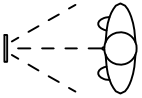



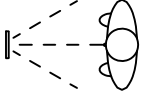


- 3.1 Adjust the valve flow rate. See appropriate fixture installation instructions.
- 3.2 Check water main supply for 20 psig minimum flow pressure.
- 3.3 Inspect stop (by others) – open & no debris.
- 3.4 Inspect in–line strainer for debris – clean.
- 3.5 Inspect bubbler for debris – clean.
- 3.6 Inspect all tubing for twists or kinks.
- 3.7 Replace valve cartridge.


 MURDOCK-SUPER SECUR P.O. Box 3527 Industry, CA 91744 15125 Proctor Ave Industry, CA 91746 Phone: (800) 591-9880 www.murdock-supersecur.com	TITLE DRINKING FOUNTAIN VALVE MAINTENANCE INSTRUCTIONS		
	MANUFACTURE DATE JANUARY 2006 TO PRESENT	DATE ISSUED 09/28/05 DATE REVISED 03/02/16	DRAWING NUMBER 9940-200-001

9 VOLT DC SENSOR OPERATED VALVES

NORMAL VALVE FUNCTION: 9 Volt DC sensor operated valve has flow time of 90 seconds maximum. To reactivate, the user must move out of and return to the sensing area.

<i>CONDITION:</i> WATER DOES NOT FLOW		
 		
<i>INDICATORS:</i>	<i>PROBABLE CAUSE:</i>	<i>SOLUTION:</i>
Sensor flashes continuously every two seconds when hands are within range.	– Low battery warning.	– Replace battery.
Sensor does not flash when the users hands are within range.	– Circuit breaker tripped. – Battery completely used up. – Defective 9VDC transformer. – Transformer polarity crossed.	– Reset circuit breaker. – Replace battery. – Replace transformer. – Replace transformer. (Sensor may be damaged & need replacement.)
	– Unit is in "Security Mode" after 90 seconds of constant detection. – Range is too short. – Range is too long.	– Remove sources of detection. Wait 30 seconds before checking. – Increase range. – Decrease range and wait 30 seconds.
	– Sensor is picking up a highly reflective surface. – Defective sensor.	– Eliminate cause of reflection. Wait 30 seconds before checking. – Replace sensor.
Sensor flashes once when the users hands are within range.	– Stops or water main closed. – Bad sensor to solenoid connection. – Debris or scale in solenoid assembly. – Debris or scale in diaphragm. – Debris or scale in strainer.	– Open stops or water main. – Ensure wires make proper contact. – Remove solenoid, pull out plunger and spring, and clean with scale remover solution or pressurized air. – Remove diaphragm and clean. – Remove strainer and clean.
<i>CONDITION:</i> WATER FLOWS CONTINUOUSLY		
		
<i>INDICATORS:</i>	<i>PROBABLE CAUSE:</i>	<i>SOLUTION:</i>
Sensor flashes when users hands are within range.	– Debris or scale in diaphragm. – Diaphragm is defective or torn.	– Remove diaphragm and clean. – Replace diaphragm.
Sensor does not flash when the users hands are within range.	– Sensor is dirty or covered. – Range too long or Highly Reflective Surface, Sunlight, Bright Lights, etc. are Triggering Sensor.	– Clean or uncover sensor and wait 30 seconds. – Decrease range and wait 30 seconds. – Eliminate cause of reflection or Correct Lighting Problem.
<i>CONDITION:</i> WATER FLOWS CONTINUOUSLY BUT STOPS WHEN HANDS ARE WITHIN RANGE		
  		
<i>INDICATORS:</i>	<i>PROBABLE CAUSE:</i>	<i>SOLUTION:</i>
Water runs continuously when sensor not activated. Sensor flashes when hands are within range and water shuts off.	– Solenoid polarity crossed.	– Disconnect solenoid and reverse polarity.

MINIMUM / MAXIMUM WATER PRESSURE (PSI) 30 / 100. MAXIMUM WATER TEMPERATURE 130°F.
 Refer to Acorn Operations And Maintenance Manual for installation instructions and repair parts.

 MORRIS GROUP INTL <small>P.O. BOX 3527 Industry, CA 91744 15125 Proctor Ave Industry, CA 91746 (626) 336-4561 FAX (626) 961-2200</small>	<table style="width: 100%; border-collapse: collapse;"> <tr> <td style="width: 50%; padding: 5px;"><small>TITLE</small> 9 VOLT DC SENSOR OPERATED VALVE MAINTENANCE INSTRUCTIONS -S0</td> <td style="width: 50%; padding: 5px;"><small>DATE ISSUED</small> 01/17/02</td> </tr> <tr> <td style="padding: 5px;"><small>MANUFACTURE DATE</small> AUGUST 2001</td> <td style="padding: 5px;"><small>DATE REVISED</small> 08/23/04</td> </tr> <tr> <td style="padding: 5px;">TO PRESENT</td> <td style="padding: 5px;"><small>DRAWING NUMBER</small> 9940-012-001</td> </tr> </table>	<small>TITLE</small> 9 VOLT DC SENSOR OPERATED VALVE MAINTENANCE INSTRUCTIONS -S0	<small>DATE ISSUED</small> 01/17/02	<small>MANUFACTURE DATE</small> AUGUST 2001	<small>DATE REVISED</small> 08/23/04	TO PRESENT	<small>DRAWING NUMBER</small> 9940-012-001	
<small>TITLE</small> 9 VOLT DC SENSOR OPERATED VALVE MAINTENANCE INSTRUCTIONS -S0	<small>DATE ISSUED</small> 01/17/02							
<small>MANUFACTURE DATE</small> AUGUST 2001	<small>DATE REVISED</small> 08/23/04							
TO PRESENT	<small>DRAWING NUMBER</small> 9940-012-001							