


**INSTALLATION INSTRUCTIONS:**

REFER TO DRAWING #9938-375-001 TO INSTALL MOUNTING PLATE CORRECTLY.

- A-ROUGH-IN WASTE AND SUPPLY LINES DURING -MP1 ① INSTALLATION OR PRIOR TO MOUNTING FIXTURE.
- B-CAREFULLY REMOVE FIXTURE FROM PACKING MATERIAL AND COVER TO PREVENT SCRATCHING OR DAMAGE.
- C-SEPARATE BASIN ASSEMBLY ② FROM HOUSING AND INSPECT FIXTURE TO ENSURE ALL TUBING CONNECTIONS, BUBBLERS AND PUSHBUTTONS HAVE NOT BECOME LOOSE DURING SHIPPING. CORRECT IF NECESSARY.
- D-ALIGN FIXTURE MOUNTING POINTS WITH STUDS ③ AND SLIDE FIXTURE TO FINISHED WALL. FIX WITH NUTS AND WASHERS PROVIDED ④.

**FLOW ADJUSTMENT DETAIL**

- E-MAKE UP CONNECTIONS TO 1-1/4" OD WASTE TRAP ASSEMBLY ⑤ PROVIDED.
- F-FLUSH SUPPLY LINES THOROUGHLY BEFORE CONNECTING SUPPLY INLETS ⑥.
- G-TEST OPERATION OF BUBBLERS BY DEPRESSING BUTTONS AND ADJUST THE FLOW RATE AS REQUIRED. SEE DETAIL A. CHECK ALL CONNECTIONS AND WASTE PIPING FOR LEAKS. CORRECT IF PRESENT.
- H-INSTALL BASIN ASSEMBLY ② TO COMPLETE THE INSTALLATION.

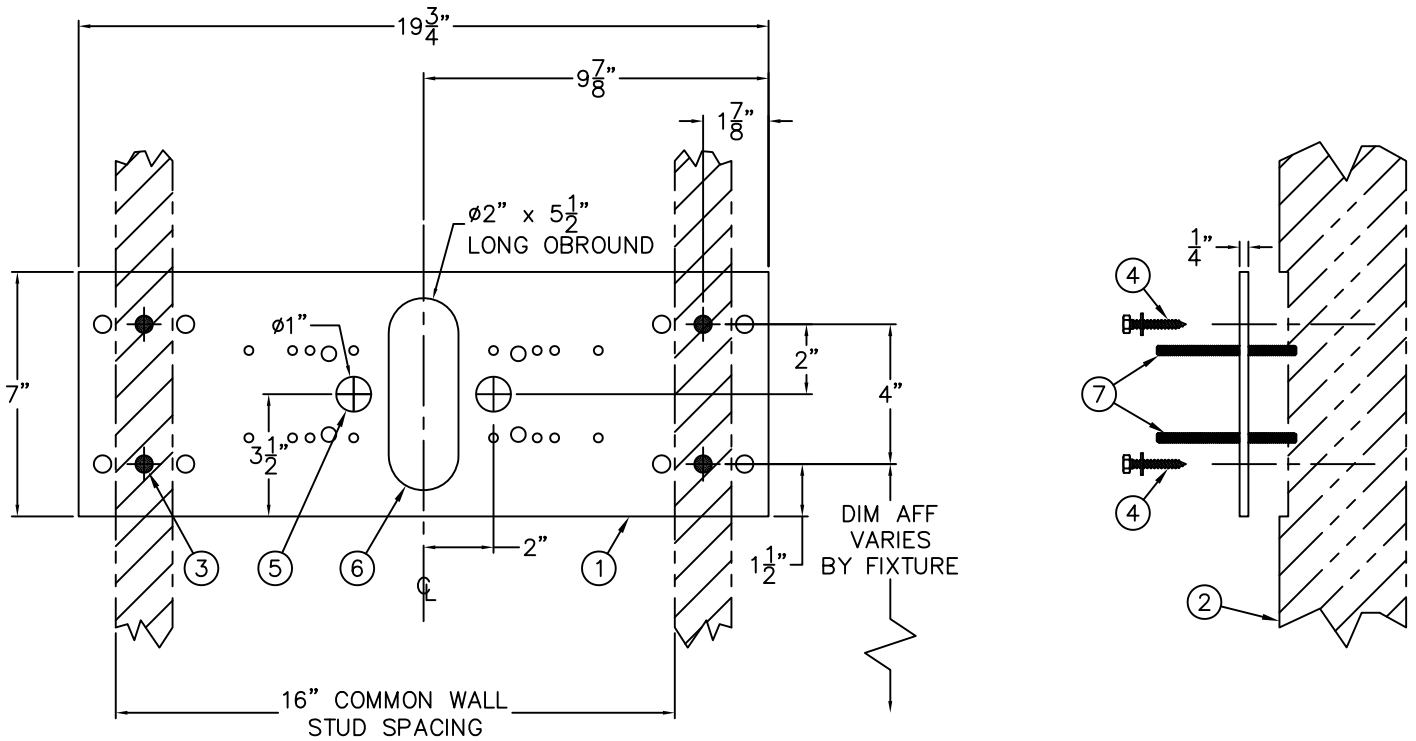
|  |   |  |  |
|--|---|--|--|
|  <p>MURDOCK-SUPER SECUR<br/>P.O. Box 3527 Industry, CA 91744<br/>15125 Proctor Ave Industry, CA 91746<br/>Phone: (800) 591-9880<br/>www.murdock-supersecur.com</p> | <p>TITLE <b>CONTOURED WALL MOUNTED 14" LONG DRINKING FOUNTAIN</b></p> |  |  |
|  | <p>MANUFACTURE DATE</p> <p><b>JANUARY 2006<br/>TO PRESENT</b></p>     | <p>DATE ISSUED</p> <p><b>09/23/05</b></p> <p>DATE REVISED</p> <p><b>03/01/16</b></p> | <p>DRAWING NUMBER</p> <p><b>9938-001-001</b></p> |



**INSTALLATION INSTRUCTIONS**

**DRINKING FOUNTAIN**

ROUGH-IN FOR 3/8" OD PUSH-IN SUPPLY INLET, STRAIGHT STOP RECOMMENDED. \*1/4" NCT x 2" LONG TUBE STUB OUT PROVIDED.  
ROUGH-IN FOR 1-1/4" OD P-TRAP WASTE OUTLET.

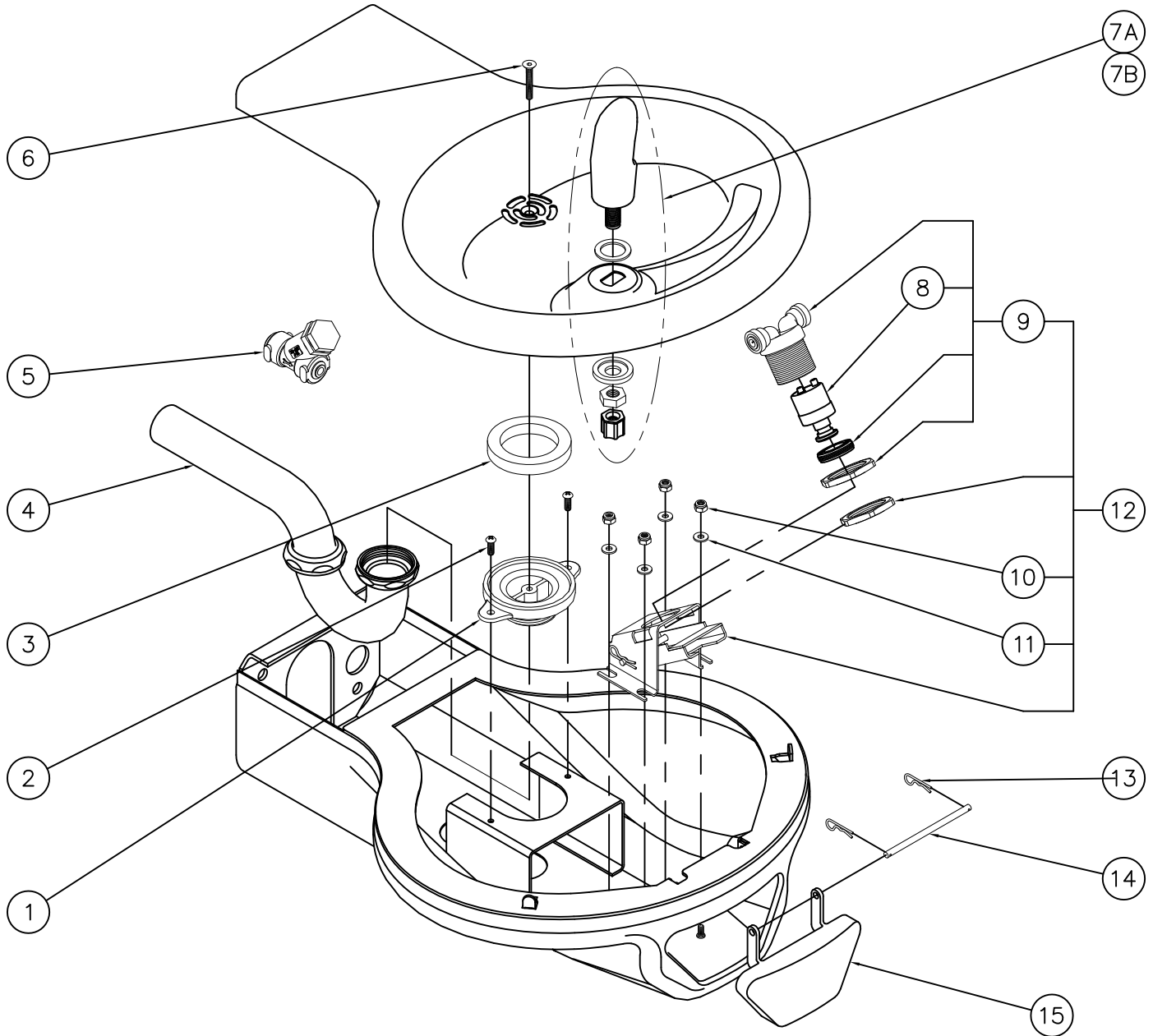


**INSTALLATION INSTRUCTIONS:**


- A-PLATE ① INTENDED TO BE RECESSED FLUSH WITH SUPPORT FRAMING ② PROVIDED BY INSTALLER. FRAME & BLOCK OUT SUPPORT USING DIMENSIONS SHOWN. FRAME SHOULD SUPPORT 300 LBS MINIMUM.
- B-MOUNTING PLATE ① IS 1/4" THICK AND INCLUDES 12, 1/2" DIAMETER PUNCHING FOR ANCHORING HARDWARE BY OTHERS.
- C-STRIKE A HORIZONTAL CHALK LINE TO LOCATE BOTTOM MOUNTING HOLES ③. REFERENCE DISCHARGE HEIGHT REQUIREMENTS FOR YOUR MODEL AND FACILITY TO DETERMINE CORRECT HEIGHT AT FINISHED FLOOR (AFF).

- D-AFTER POSITIONING PLATE CORRECTLY, FIX PLATE TO WALL USING APPROPRIATE, INSTALLER PROVIDED ANCHORING HARDWARE ④.
- E-MAKE UP APPROPRIATE SUPPLY ⑤ AND WASTE ⑥ ROUGHS THROUGH MOUNTING PLATE OPENINGS. A STRAIGHT SUPPLY STOP IS RECOMMENDED.
- F-REFER TO FIXTURE INSTALLATION SHEETS TO LOCATE 5/16" THREADED STUDS MOUNTING HARDWARE AND THREAD STUDS ⑦ THRU PLATE SO THAT A MINIMUM OF 1-1/4" OF THREAD PROJECTS BEYOND THE FINISHED WALL MATERIAL.
- G-PROTECT THREADED STUDS ⑦, SUPPLY ⑤ AND WASTE ⑥ ROUGHS WHILE FINISHING WALL.

|   |   |  |
|---|---|--|
| <p>MURDOCK-SUPER SECUR<br/>P.O. Box 3527 Industry, CA 91744<br/>15125 Proctor Ave Industry, CA 91746<br/>Phone: (800) 591-9880<br/>www.murdock-supersecur.com</p> | <p>TITLE<br/><b>-MP1 WALL MOUNTING PLATE</b></p>                      |  |
|   | <p>MANUFACTURE DATE<br/><b>JANUARY 2006</b><br/><b>TO PRESENT</b></p> | <p>DATE ISSUED<br/><b>09/28/05</b></p> <p>DATE REVISED<br/><b>03/02/16</b></p> |



|      |              |                               |      |              |                           |
|------|--------------|-------------------------------|------|--------------|---------------------------|
| 1    | 7000-005-199 | DRAIN ADAPTER                 | 8    | 7000-060-000 | VALVE CARTRIDGE           |
| 2    | 0116-016-000 | PHILLIPS TRUSS HEAD SCREW     | 9    | 7000-050-001 | VALVE ASSEMBLY            |
| 3    | 7000-006-000 | FLAT DRAIN ADAPTER GASKET     | 10   | 0308-009-000 | NYLON INSERT LOCKNUT      |
| 4    | 7000-015-000 | 1-1/4" OUTER DIAMETER P-TRAP  | 11   | 0331-004-000 | FLAT WASHER               |
| 5    | 7000-021-001 | "Y" STRAINER                  | 12   | 7001-008-001 | VALVE ACTIVATION ASSEMBLY |
| 6    | 0152-010-000 | CENTER REJECT FLAT HEAD SCREW | 13   | 0341-100-000 | WIRE CLIP                 |
| 7A   | 7000-012-001 | STAINLESS STEEL BUBBLER       | 14   | 7000-100-199 | BLACK DELRIN SHAFT        |
| 7B   | 7000-099-002 | FLEXIBLE BUBBLER ASSEMBLY     | 15   | 7000-004-000 | PUSH PAD                  |
| ITEM | PART NUMBER  | DESCRIPTION                   | ITEM | PART NUMBER  | DESCRIPTION               |

|   |   |   |  |
|---|---|---|--|
|  <b>MURDOCK-SUPER SECUR</b><br>P.O. Box 3527 Industry, CA 91744<br>15125 Proctor Ave Industry, CA 91746<br>Phone: (800) 591-9880<br>www.murdock-supersecur.com | <b>TITLE</b>  |   |  |
|   | <b>PUSH PAD OPERATED CONTOURED DRINKING FOUNTAIN</b>                |   |  |
|   | <b>MANUFACTURE DATE</b><br><b>JANUARY 2006</b><br><b>TO PRESENT</b> | <b>DATE ISSUED</b><br><b>09/22/05</b><br><b>DATE REVISED</b><br><b>03/01/16</b> | <b>DRAWING NUMBER</b><br><b>9938-000-500</b> |



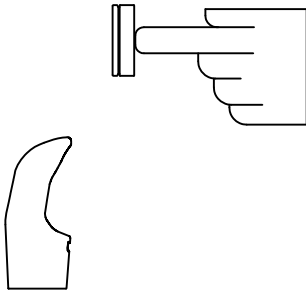
**INSTALLATION INSTRUCTIONS**

**STANDARD PUSH PAD / PUSH BUTTON DRINKING FOUNTAIN**

**CONDITION:**

**SOLUTION:**

**NO WATER FLOW:**



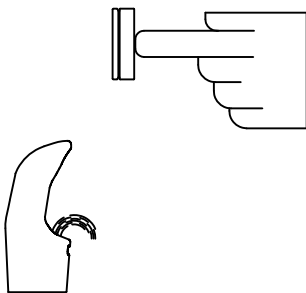
- 1.1 Check water main supply – open.
- 1.2 Inspect stop (by others) – open & no debris.
- 1.3 Inspect in–line strainer for debris – clean.
- 1.4 Replace valve cartridge.

**WATER DRIPS / WILL NOT SHUT OFF:**




- 2.1 For push pad activated drinking fountains only: Open fixture and move valve bracket assembly further back from push pad.
- 2.2 Replace valve cartridge.

**REDUCED WATER FLOW:**



- 3.1 Adjust the valve flow rate. See appropriate fixture installation instructions.
- 3.2 Check water main supply for 20 psig minimum flow pressure.
- 3.3 Inspect stop (by others) – open & no debris.
- 3.4 Inspect in–line strainer for debris – clean.
- 3.5 Inspect bubbler for debris – clean.
- 3.6 Inspect all tubing for twists or kinks.
- 3.7 Replace valve cartridge.

|   |   |   |  |
|---|---|---|--|
|  <b>MURDOCK-SUPER SECUR</b><br>P.O. Box 3527 Industry, CA 91744<br>15125 Proctor Ave Industry, CA 91746<br>Phone: (800) 591-9880<br>www.murdock-supersecur.com | <b>TITLE DRINKING FOUNTAIN VALVE MAINTENANCE INSTRUCTIONS</b>       |   |  |
|   | <b>MANUFACTURE DATE</b><br><b>JANUARY 2006</b><br><b>TO PRESENT</b> | <b>DATE ISSUED</b><br><b>09/28/05</b><br><b>DATE REVISED</b><br><b>03/02/16</b> | <b>DRAWING NUMBER</b><br><b>9940-200-001</b> |