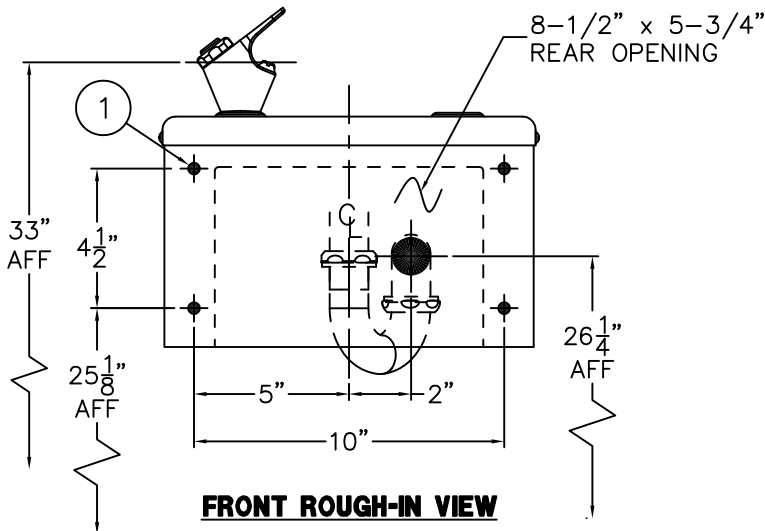
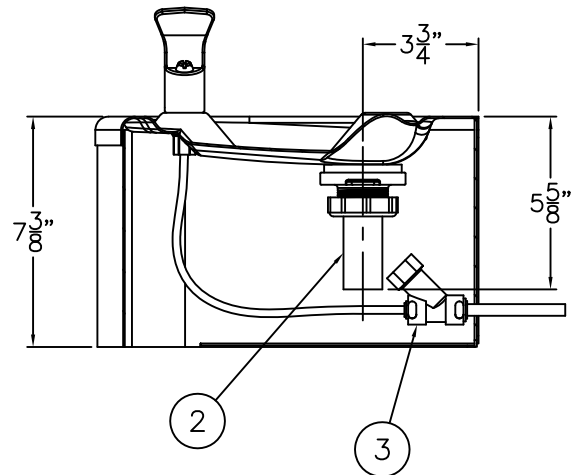


**OPTIONAL -VRP VANDAL RESISTANT PLATE AND SCREWS**



**FRONT ROUGH-IN VIEW**




**INSTALLATION INSTRUCTIONS:**

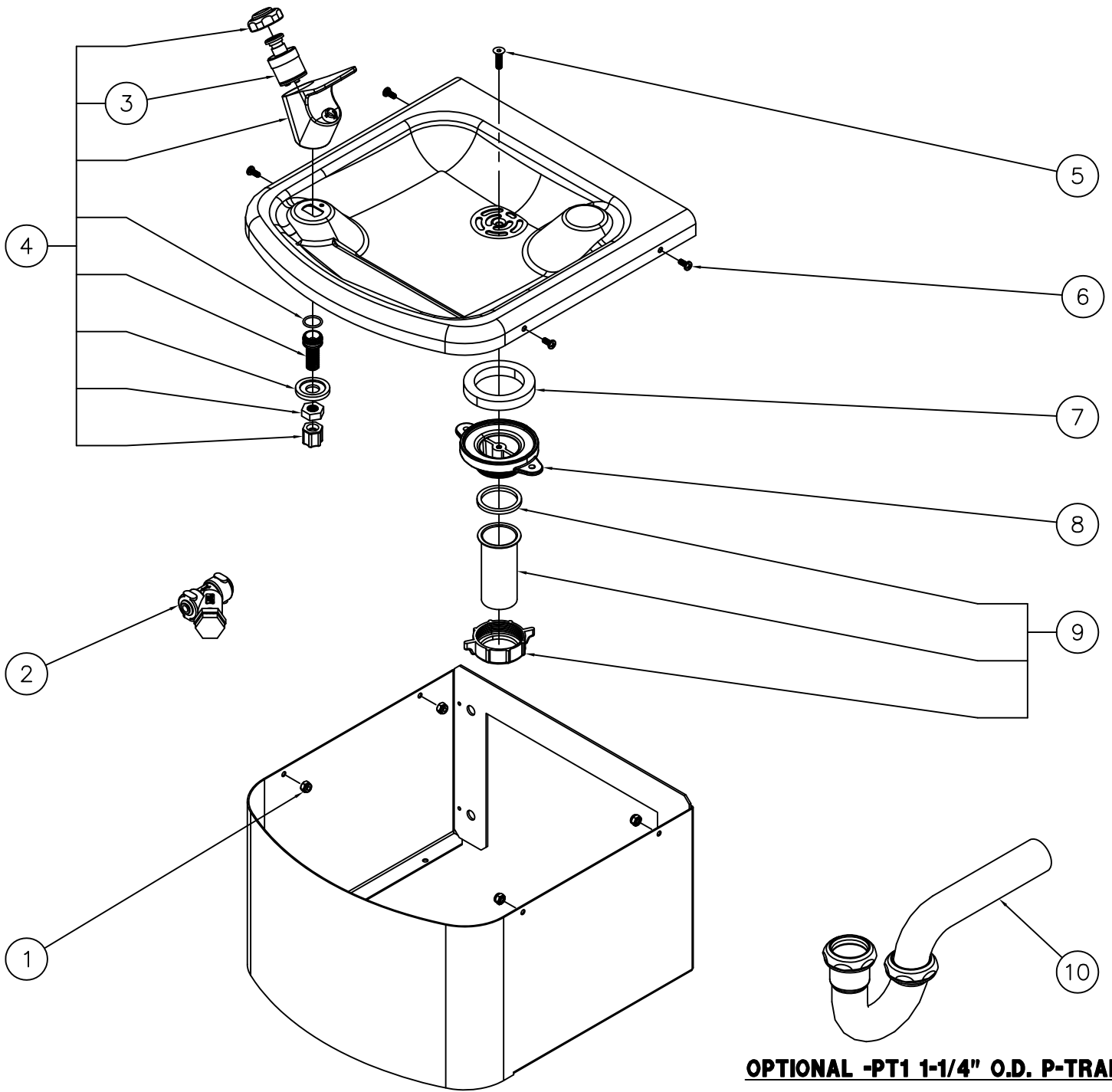
A- ROUGH-IN FOR THE FOLLOWING:

- WALL ANCHORS FOR  $\varnothing 3/8$ " FIXTURE MOUNTING PUNCHING.
- 1-1/4" OD P-TRAP WASTE OUTLET BY OTHERS.
- 1/4" NCT SUPPLY INLET CONNECTION (STRAIGHT STOP BY OTHERS RECOMMENDED)

B- SEPARATE BASIN ASSEMBLY FROM HOUSING AND INSPECT FIXTURE TO ENSURE ALL TUBING CONNECTIONS AND BUBBLER HAVE NOT BECOME LOOSE DURING SHIPPING. CORRECT IF NECESSARY.

- C- ALIGN FIXTURE MOUNTING POINTS WITH INSTALLER PROVIDED ANCHORING HARDWARE AND SECURE WITH NUTS AND WASHERS BY OTHERS.
- D- MAKE UP CONNECTIONS TO 1-1/4" OD P-TRAP WASTE ASSEMBLY BY OTHERS.
- E- FLUSH SUPPLY LINES THOROUGHLY BEFORE CONNECTING 1/4" NCT SUPPLY INLET.
- F- ASSEMBLE BASIN TO FIXTURE & TEST OPERATION BY DEPRESSING BUTTON.

 <p>MURDOCK-SUPER SECUR P.O. Box 3527 Industry, CA 91744 15125 Proctor Ave Industry, CA 91746 Phone: (800) 591-9880 www.murdock-supersecur.com</p>	<p>TITLE <b>A4A1400P WALL MOUNTED ECONOMY DRINKING FOUNTAIN</b></p>		
	<p>MANUFACTURE DATE <b>JULY 2007</b> <b>TO PRESENT</b></p>	<p>DATE ISSUED <b>09/19/07</b></p> <p>DATE REVISED <b>03/08/16</b></p>	<p>DRAWING NUMBER <b>9938-251-001</b></p>



**OPTIONAL -PT1 1-1/4" O.D. P-TRAP**

1	0308-009-000	#8-32 NYLON INSERT LOCKNUT	7	7000-006-000	FLAT DRAIN ADAPTER GASKET
2	7000-021-001	1/2" STRAINER	8	7000-005-199	DRAIN ADAPTER
3	7000-060-000	VALVE CARTRIDGE WITH FOAM WASHER	9	7000-032-001	1-1/4" OUTER DIAMETER TAILPIECE ASSY
4	7000-011-001	DECK MOUNTED PUSHBUTTON BUBBLER ASSY	10	4953-002-000	1-1/4" x 1-1/4" OUTER DIAMETER P-TRAP
5	0152-006-000	ALLEN FLAT HEAD SCREW			
6	6502-100-000	#8-32 x 3/8" LONG PHILLIPS HEAD SCREW			
ITEM	PART NUMBER	DESCRIPTION	ITEM	PART NUMBER	DESCRIPTION



MURDOCK-SUPER SECUR  
P.O. Box 3527 Industry, CA 91744  
15125 Proctor Ave Industry, CA 91746  
Phone: (800) 591-9880  
www.murdock-supersecur.com

**TITLE A4A1400P WALL MOUNTED ECONOMY DRINKING FOUNTAIN**

MANUFACTURE DATE  
**JULY 2007**  
**TO PRESENT**

DATE ISSUED  
**09/19/07**  
DATE REVISED  
**03/08/16**

DRAWING NUMBER  
**9938-251-500**



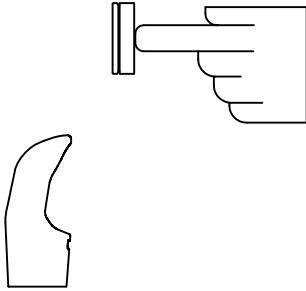
**INSTALLATION INSTRUCTIONS**

**STANDARD PUSH PAD / PUSH BUTTON DRINKING FOUNTAIN**

**CONDITION:**

**SOLUTION:**

**NO WATER FLOW:**



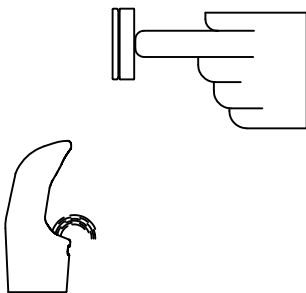
- 1.1 Check water main supply – open.
- 1.2 Inspect stop (by others) – open & no debris.
- 1.3 Inspect in-line strainer for debris – clean.
- 1.4 Replace valve cartridge.

**WATER DRIPS / WILL NOT SHUT OFF:**




- 2.1 For push pad activated drinking fountains only: Open fixture and move valve bracket assembly further back from push pad.
- 2.2 Replace valve cartridge.

**REDUCED WATER FLOW:**



- 3.1 Adjust the valve flow rate. See appropriate fixture installation instructions.
- 3.2 Check water main supply for 20 psig minimum flow pressure.
- 3.3 Inspect stop (by others) – open & no debris.
- 3.4 Inspect in-line strainer for debris – clean.
- 3.5 Inspect bubbler for debris – clean.
- 3.6 Inspect all tubing for twists or kinks.
- 3.7 Replace valve cartridge.

 <p>MURDOCK-SUPER SECUR P.O. Box 3527 Industry, CA 91744 15125 Proctor Ave Industry, CA 91746 Phone: (800) 591-9880 www.murdock-supersecur.com</p>	<p>TITLE <b>DRINKING FOUNTAIN VALVE MAINTENANCE INSTRUCTIONS</b></p>		
	<p>MANUFACTURE DATE <b>JANUARY 2006</b> <b>TO PRESENT</b></p>	<p>DATE ISSUED <b>09/28/05</b></p> <p>DATE REVISED <b>03/02/16</b></p>	<p>DRAWING NUMBER <b>9940-200-001</b></p>