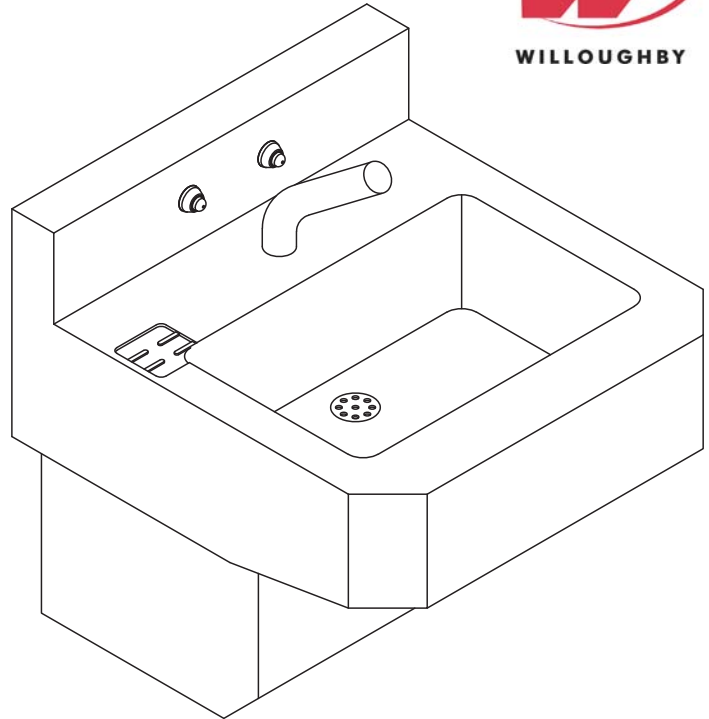


## HS-1014-96-HC-FA Stainless Steel 18" Wide Front Mounted Handicap-ADA Compliant Rectangular Bowl Lavatory



*(Unit may be shown with optional features)*



To specify fixture and accessories, use the Model Number and Options page.  
Example: To specify an 18" Wide, Front Mounted, Handicap-ADA Compliant, Rectangular Bowl Lavatory with dual temp. pneumatic metering valve, ligature-resistant pneumatic push buttons, deck mounted spout, standard removable 'p'-trap, and wall template  
Use the following Willoughby Model Number:  
**HS-1014-96-HC-FA-PML2-PBH-DMS-RPT-MT**

### Recommended Specifications

Stainless Steel, 18" Wide, Front Mounted, Handicap-ADA Compliant, Rectangular Bowl Lavatory shall be:  
Willoughby Model No. **HS-1014-96-HC-FA**  
(Select from model number and options list on next page)

Fixture shall be fabricated from 14 GA., Type 304 stainless steel. The construction shall be all welded, with exposed stainless surfaces polished to a #4 satin finish.

Standard lavatory shall include:

- Rectangular-shaped bowl, 14-1/2" x 9-1/2" x 4-3/8" deep
- Fast drain with air vent
- (1-1/2") slip joint, cast brass union 'p' trap
- Removable bottom panel attached with vandal resistant screws
- Self-draining soap dish
- 0.5 GPM flow rate

Anchoring shall be from the front with 'z' clip, anchoring holes provided. Anchoring hardware by others. Unit requires no chase area for installation and maintenance.

Note: Only deck mounted Willoughby lavatory spouts and filler/bubblers are available with this lavatory model.



**WARNING:** Cancer and Reproductive Harm

- [www.P65Warnings.ca.gov](http://www.P65Warnings.ca.gov)

visit our website at [www.willoughby-ind.com](http://www.willoughby-ind.com)  
5105 West 78th Street • Indianapolis, IN. 46268  
(317) 875-0830 • Fax: (317) 875-0837 • (800) 428-4065



MADE IN THE U.S.A.

# MODEL NUMBER AND OPTIONS:

## 1.) Base Model Number:

- HS-1014-96-HC-FA      Stainless Steel, 18" Wide, Front Mounted,  
Handicap-ADA Compliant, Rectangular Bowl  
Lavatory

## 2.) Spout/Bubbler Selection:

- DMS Deck Mounted Spout  
 DMB Deck Mounted Bubbler  
 DMBH Ligature-resistant Deck Mounted Bubbler

## 3.) Lavatory Valve Selection:

- NV No Valve (Select Hole Punching if needed)  
 PML1 Single Temp. Pneumatic Metering  
 PML2 Dual Temp. Pneumatic Metering  
 E1L1 Single Temp. Electronic (pick control)\*  
 E1L2 Dual Temp. Electronic (pick control)\*

## 4.) Lavatory Valve Actuation:

- PBH Ligature-resistant Pneumatic Push Buttons  
 PZPB Ligature-resistant Piezo Electronic Push Buttons

## 5.) Electronic Controls\* (Must Use Electronic Push Button):

- WUCC-3010       Pneutronic       WMSII  
(The WUCC-3010 Control can be used to pair a Lavatory with a Toilet)

## 6.) Hole Punching:

- 4CC 4" Centerset, Ø1-1/4" Holes (Specify 2 or 3 holes: \_\_\_)  
 8CC 8" Centerset, Ø1-1/4" Holes (Specify 2 or 3 holes: \_\_\_)  
 1CC Center Shank, (1) Ø1-1/4" Hole  
 SP Special Punching (Specify hole punching dim.)  
SP: \_\_\_\_\_

## 7.) Lavatory Waste:

- RPT Removable 'P'-Trap (Standard)  
 OV Lavatory Overflow  
 SLOW Slow Drain

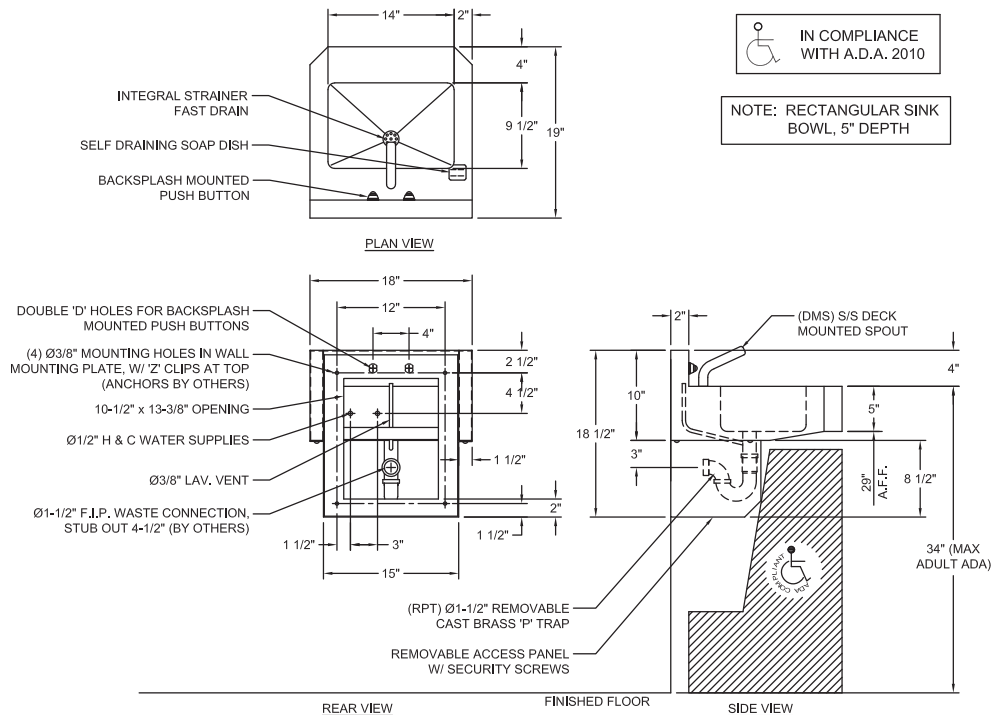
## 8.) Options:

- MT Wall Template  
 TB1 Single Toothbrush Holder  
 Right       Left  
 TB2 Dual Toothbrush Holder  
 Right       Left  
 TF24H Hard-wired Transformer, 110VAC to 24VAC\*  
 TF24P Plug-in Transformer, 110VAC to 24VAC\*  
 TH1 Single Towel Hook  
 Right       Left  
 TH2 Dual Towel Hook  
 Right       Left  
 DC Decorator Color (Fixture exterior only - White)  
 ISH Integral Shelf  
 Other: \_\_\_\_\_  
 Other: \_\_\_\_\_

\*(Req. 110V power through ground fault interrupter (GFCI) receptacle)

Approved For Manufacturing By: \_\_\_\_\_ Date: \_\_\_\_\_ Company: \_\_\_\_\_  
Wall Thickness: \_\_\_\_\_ Wall Type: \_\_\_\_\_

VERIFY ALL DIMENSIONS WITH FACTORY PRIOR TO ROUGH-IN  
WILLOUGHBY RESERVES THE RIGHT TO MAKE CHANGES IN DESIGN AND  
DIMENSIONS WITHOUT FORMAL NOTICE AND WITHOUT INCURRING OBLIGATION.



visit our website at [www.willoughby-ind.com](http://www.willoughby-ind.com)  
5105 West 78th Street • Indianapolis, IN. 46268  
(317) 875-0830 • Fax: (317) 875-0837 • (800) 428-4065



MADE IN THE U.S.A.