



# HYDRANTS

## M-3515 GUARDIAN PLUS DUAL CHECK

**1/4 TURN NON-FREEZE HYDRANT WITH AUTOMATIC DRAINING, INTEGRAL VACUUM BREAKER, INTEGRAL SERVICE SHUT-OFF VALVE, DUAL CHECK VALVE AND STAINLESS STEEL BOX**

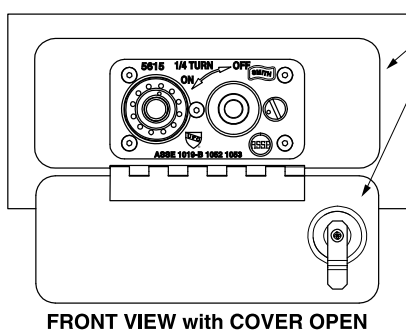
**FUNCTION:** Provides positive non-freeze protection where water is required at the outside of the building and features an integral vacuum breaker, dual check valve and water service shut-off valve. The stainless steel box conceals the nozzle and operating mechanism. The locking cover prevents unauthorized use.

**1/4 Turn of the Key or Wheel Handle Allows Full Flow to be Obtained**

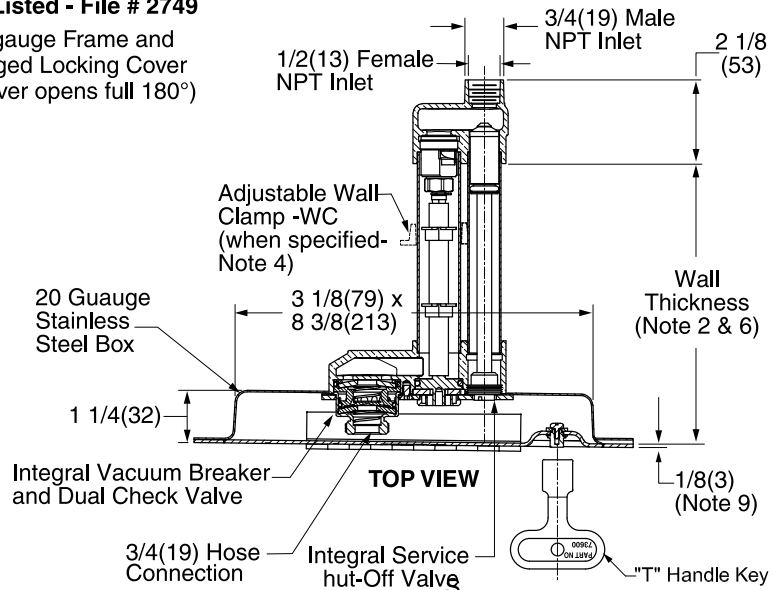
**Meets ASME A112.21.3M**

**Complies with ASSE 1019-B, 1052 & 1053**

**IAPMO Listed - File # 2749**



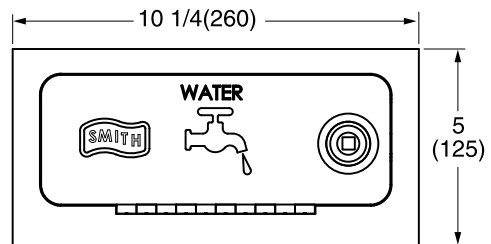
16 gauge Frame and Hinged Locking Cover (Cover opens full 180°)



**NOTES:**

1. Recommended wall opening 3-3/16" (83) x 8-1/2" (215).
2. When ordering, specify wall thickness in 1" (25) increments as follows 5,6.....24.
3. All hydrants are manufactured with "NO-LEAD" brazing rings and USDA Approved lubricants.
4. When wall clamp -WC is desired, increase wall thickness dimension by 2" (51).
5. Add 3/4" (19) to Overall Length When Specified.
6. When specifying -SAP mild climate the wall the wall thickness shall be 3" (76).
7. Dimensions shown in parentheses are in millimeters.
8. The California Lead Laws and NSF/ANSI Standards 61-2008 - Drinking Water System Components are not applicable to this hydrant as it is not intended to convey/dispense water for human consumption through drinking or cooking.
9. 3/8"(10) when optional box face material is specified
10. An additional inlet isolation or shut-off valve is usually not needed with this hydrant, but if required it should be mounted ten (10) feet or more away from the hydrant inlet.
11. Working Pressure:  
25 psi to 125 psi (172 kPa to 862 kPa)
12. Temperature Range:  
33°F to 140°F (.6°C to 60°C).
13. This ASSE 1019 device shall not be subjected to more twelve (12) hours of continuous water pressure.
14. FOR IRRIGATION PURPOSES ONLY.

FIG. M-3515



Seepage of a small amount of water may occur from the vacuum breaker upon initial opening and closing of the hydrant. This is normal operation.

**REGULARLY FURNISHED:**

Bronze Quarter Turn Non-Freeze Automatic Draining Hydrant with Stainless Steel Face, Hose Connection, Integral Vacuum Breaker, Integral Service Shut-Off Valve, Dual Check Valve, "T" Handle Key and Stainless Steel Box with Full 180° Cover Opening.

**VARIATIONS:**

- Adjustable Wall Clamp -WC (Note 4)
- 1" Hose Connection -HC1
- 1" Male NPT Inlet Connection -IC1 (Note 5)
- Mild Climate -SAP (Note 6)
- Cylinder Lock -CL
- Wheel Handle -WH

**OPTIONAL MATERIALS:**

- Polished Bronze Box Face -PB
- Nickel Bronze Box Face -NB
- Rough Bronze Box Face -RB
- Chrome Plated Box Face -CP

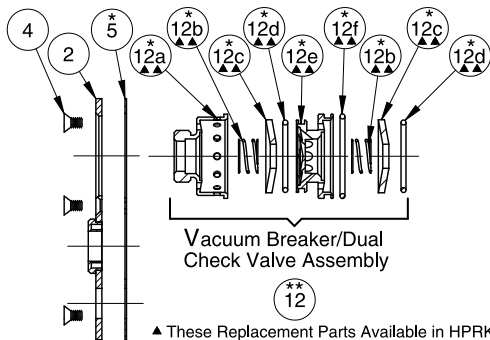
⚠ **WARNING:** Cancer and Reproductive Harm - [www.P65Warnings.ca.gov](http://www.P65Warnings.ca.gov)



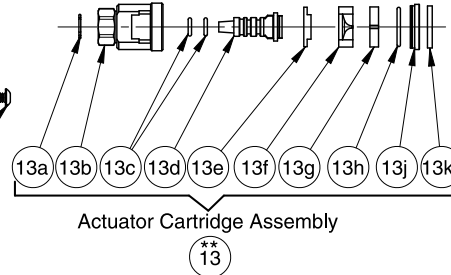
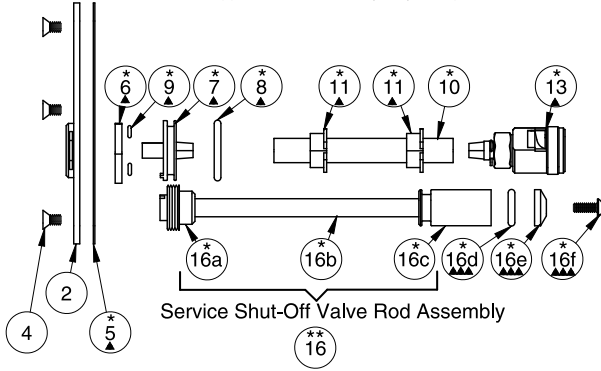
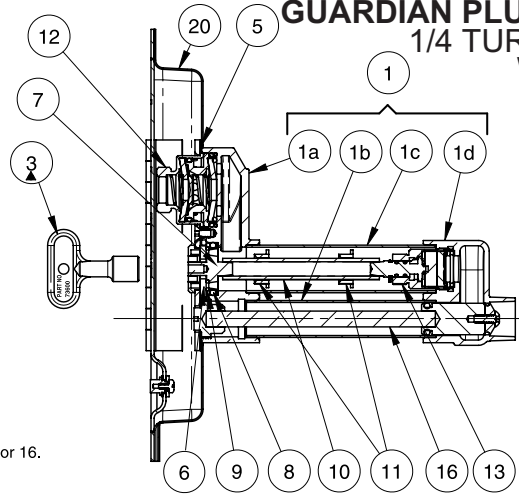
# HYDRANTS

## Hydrant Part List

### GUARDIAN PLUS DUAL CHECK 1/4 TURN NON-FREEZE WALL HYDRANT



- ▲ These Replacement Parts Available in HPRK-19
- ▲▲ These Replacement Parts Available in HPRK-19VB
- ▲▲▲ These Replacement Parts Available in HPRK-15SV
- \* These Parts Accessible from Face of Hydrant by Removing Wall Plate Assembly.
- \*\* Parts supplied as an assembly only, see part 12, 13 or 16.



HYDRANT PARTS LIST							
NO.	DESCRIPTION	NO.	DESCRIPTION	NO.	DESCRIPTION	NO.	DESCRIPTION
1	Casing Assembly	9	Drain Hole Seal (2)	13a	**Retaining Ring	16	Service Valve Rod Assembly
1a	Head	10	Operator Rod	13b	**Valve Body	16a	**Service Valve Operator
1b	Casing	11	Operator Rod Guides (2)	13c	**Actuator O-Ring (2)	16b	**Service Valve Rod
1c	Casing	12	Vacuum Breaker/Dual Check Valve Assembly	13d	**Valve Actuator	16c	**Service Valve Plunger
1d	Valve Housing	12a	**Vacuum Breaker Housing	13e	**Nylon Thrust Washer	16d	Service Valve O-Ring
2	Wall Plate Assembly	12b	**Spring (2)	13f	**Rotating Ceramic Disc	16e	Service Valve Conical Washer
3	Key	12c	**Cone Washer (2)	13g	**Fixed Ceramic Disc	16f	Service Valve Washer
4	Wall Plate Securing Screw (5)	12d	**Small O-Ring	13h	**O-Ring	20	Box Assembly
5	Wall Plate Gasket	12e	**Flow Diverter	13j	**O-Ring Gasket Retainer		
6	Stationary Operator Piece	12f	**Large O-Ring	13k	**Rubber Seal		
7	Moveable Operator Piece	13	Actuator Cartridge Assembly				
8	Moveable Operator O-Ring						

Murdock Mfg.™ warrants that its products are free from defects in material or workmanship under normal use and service for a period of one year from date of shipment. Murdock's liability under this warranty shall be discharged solely by replacement or repair of defective material, provided Murdock™ is notified in writing within one year from date of shipment, F.O.B. Industry, California.

SELECTION SUMMARY & APPROVAL FOR MANUFACTURING	Model Number & Options _____	Quantity _____	All dimensions are subject to manufactures tolerance of plus or minus 1/2" nominal and subject to change without notice. Murdock assumes no responsibility for use of void or superseded data. Dimensions may change with the addition of optional accessories. Murdock Mfg.™, Member of Morris Group International™. Please visit <a href="http://www.murdockmfg.com">www.murdockmfg.com</a> for most current specifications.
	Company _____		
	Contact _____	Title _____	
	Signature (Approval for Manufacturing) _____	Date _____	