



PRESTIGE

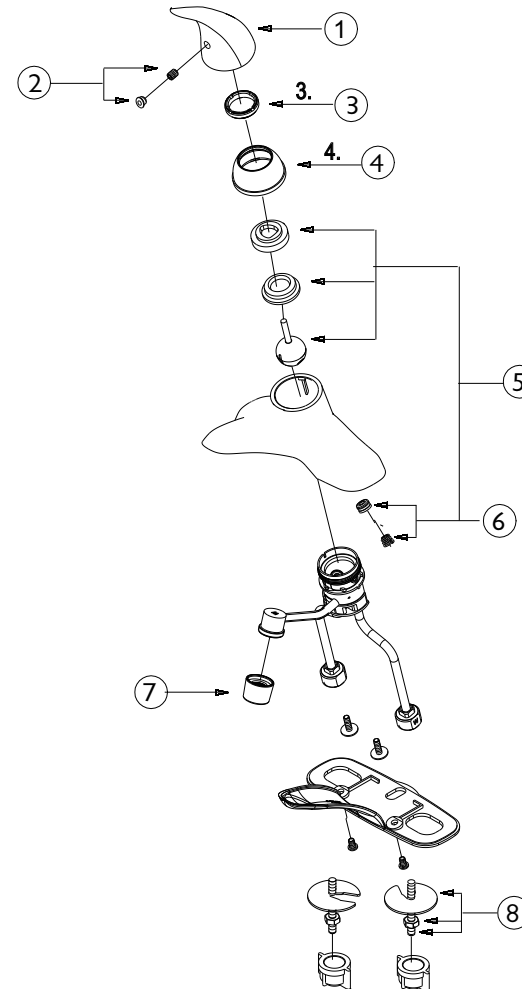
I0088LF

Dual Control Lavatory Faucet-Less-Pop-Up

Grifería para Lavamanos - Doble Manija

Incluye contra/desagüe

Limited
LIFETIME WARRANTY
Garantía de por vida limitada



1.	Metal Handle/Manija Metálica
2.	Index Button-Cold/Hot/Botón Índice - Fría/Caliente
3.	Locking Nut/Tuerca de bloqueo
4.	Trim Cap/Moldura Tapón
5.	Ball Valve Assembly/Componentes de Válvula de Bola
6.	Seat & Spring Set *2 / Juego de Asiento y Resorte
7.	Aerator/Aerador
8.	Mounting Hardware/Piezas de Montaje

These are general installation guidelines ONLY and are by no means comprehensive. Installation should be performed by a professional plumber. EZ-FLO International Inc. bears no responsibility for the improper installation or misuse of this product. These are only general recommendations.
Estas son guías de instalación SOLAMENTE y por ningún motivo son exhaustivas. La instalación debe ser realizada por un plomero profesional. EZ-FLO International, Inc. no se responsabiliza por la instalación inadecuada o mal uso de este producto. Estas son solo recomendaciones generales.

Genuine  Faucets

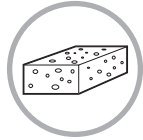
© 2016 EZ-FLO INTERNATIONAL, INC.
2750 E. Mission Blvd. - Ontario, California, USA 91761

Tools and supplies you will need the following to install your new faucet

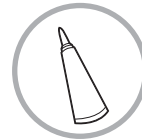
Herramientas y provisiones que necesitara para instalar su nuevo grifo



adjustable wrench
llave inglesa



sponge or rag
esponja o trapo



clear silicone latex caulk
sellador silicona-latex
transparente



10" groove
joint pliers
pinzas de junta
ranurada 10"



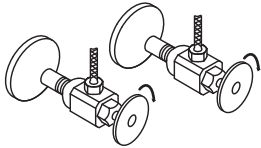
cross-head
screwdriver
desarmador de
estrella



pipe joint tape
cinta adhesiva
para tubería

Before You Begin:
Turn off water supply
Remove old faucet.

Antes de Comenzar:
Cierre el suministro de agua
Quite el grifo viejo.



Close drain to avoid losing
small parts.

Cierre el desagüe para evitar
perder piezas pequeñas.

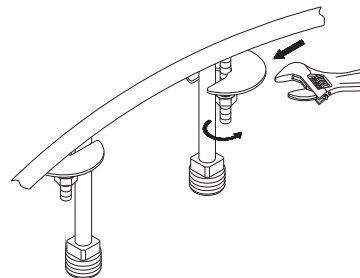
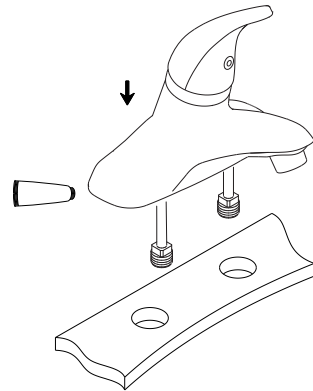
Installation Instalación

1

Position faucet. Apply clear silicone latex
caulk to base plate / Fije la placa base.
Coloque el grifo. Aplique sellador de
silicono-latex transparente a la placa base.

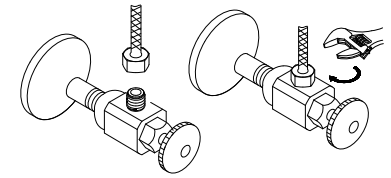
2

Slide large washer onto threaded rods and make
sure open slots are around copper tubes. Line up
faucet with edge of sink. Tighten nuts / Deslice la
arandela grande en las varillas roscadas y
asegúrese que las ranuras estén alrededor de los
tubos de cobre. Alinee el grifo con la orilla del
lavabo. Apriete las tuercas.



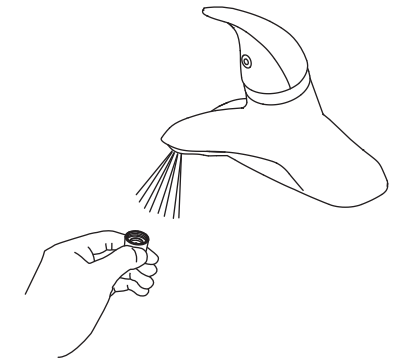
3

Apply pipe tape onto threads of the water supply.
Tighten the hose onto water supply / Aplique cinta
para tubería a las roscas del suministro de agua.
Apriete la manguera al suministro de agua.



4

Apply pipe tape onto the threads of the handle
valve body inlet port. Connect supply tube and
tighten with lock nut / Aplique cinta para tubería
a las roscas del puerto de entrada de el cuerpo de
la válvula de las manija.



Troubleshooting Guide

Minor problems often can be fixed without a plumber. Before doing any work on the faucet, shut off water supply and close stopper or drain to avoid losing small parts.

Problem	Cause	Solution
Leak from spout	Damaged or dirty seals	Disassemble faucet, remove cartridge. Clean or replace cartridge if necessary. Reassemble.
Leak from under handle	Damaged cartridge	Remove handle. Replace cartridge.
Uneven water spray	Clogged aerator	Remove aerator. Clean or replace aerator if necessary.
Leak from around aerator	Bad aerator seal	Remove aerator. Check to see that seal is flat and undamaged. Replace aerator if necessary.
Water drains slowly or not at all	Clogged drain	Remove stopper. Remove visible debris. If still clogged, remove and clean trap. Reassemble.